



69th Annual WBIA Bull Sale



mark your calendars

04.04.26

Platteville, Wisconsin

SALE STARTS AT 11AM

SALE & VIEWING LOCATION - 29200 COLLEGE FARM RD, PLATTEVILLE, WI

Offering a variety of high quality yearling bulls

Online bidding by DVAuctions - Live Sale in Platteville, WI

In-person, phone & internet bidding available



**WISCONSIN BEEF
IMPROVEMENT ASSN.**

608.342.1119 | www.wisconsinbeef.com

Follow us on Facebook for updates



**SCAN THE QR
CODE TO ALL
ON-TEST INFO &
LOT VIDEOS**



WISCONSIN BEEF IMPROVEMENT ASSN.



*longest running bull test
in the nation!*



WISCONSIN BEEF IMPROVEMENT ASSN.

The WBIA has conducted and overseen a performance bull test each year since 1957 and remains the oldest bull development program in the country. Since 1970, young beef bulls from all over Wisconsin and throughout the Midwest have been brought by top breeders to the University of Wisconsin - Platteville Pioneer Farm. Bulls prospects are developed on a forage based ration with their performance measured over a 100 day period. The top 60-65 prospects are sold at auction on the first Saturday in April at the UW-Platteville Pioneer Farm with the auction carried live online thru DV Auction.



OUR MISSION

Wisconsin Beef Improvement Association is dedicated to improving the beef industry and providing high-quality beef sires to our customers. Our board of directors is made up of consignors with an interest in serving the beef industry in Wisconsin.

2026 BOARD OF DIRECTORS

Allan Arndt, President, Simmental Director 608-774-0136 aarndt@t6b.com

Alicia Prill-Adams, Station Manager 608-642-6982 prillada@uwplatt.edu

Jory Fremstad, Angus Director 608-606-2314 SALE DAY

Marcus Reinhardt, Simmental Director 715-573-7828

Jake Adams, Director at Large 608-642-0445

Brad Johnson, Red Angus Director 715-498-9328 SALE DAY

Tim Lundell, Simmental Director 608-341-8296

Arnold Adams, Director at Large 608-514-3631 SALE DAY

Greg Miller, Consultant 608-778-8785

PROGRAM AND SALE STAFF

Facility Mgt – Alicia Prill-Adams & Justin Daugherty, 608-342-1119, 608-342-1850 Performance Program Records,

Reports, Catalog – Krista Wellnitz & Alicia Prill-Adams

Sale Committee – WBIA Board Pedigrees – Greg Miller

Cashier & Clerk – Chuck Steiner, Diane Jenkins and Staff

Lunch provided by the Grant County 4-H Livestock & Meats Judging Teams



PARTNERSHIP IN PROGRESS: WBIA AND UW-PLATTEVILLE'S PIONEER FARM

One of the strengths of the Wisconsin Beef Improvement Association (WBIA) bull test program is the collaboration behind the scenes that ensures every bull entering the test is evaluated with accuracy, consistency, and integrity. A key part of that collaboration is WBIA's long-standing partnership with the students and faculty at the University of Wisconsin–Platteville's Pioneer Farm.

Each year, the WBIA team works closely with students involved in the university's beef program to manage and operate the bull test. From the moment the bulls arrive until the final data is compiled, students are actively involved in the day-to-day responsibilities that make the test possible. Under the guidance of WBIA and university staff, students gain hands-on experience managing bulls in a real-world performance testing environment.

Students participate in nearly every step of the testing process. They assist with processing bulls upon arrival, help manage daily feeding and care, and take part in monitoring health and performance throughout the test period. They also gain experience collecting important performance data, including weights and growth measurements, while learning how nutrition programs and feed ratios impact bull development.

Beyond daily care, students are also involved in the technical evaluation side of the program. WBIA works alongside them as they help collect and interpret test data, evaluate bull performance, and participate in procedures such as ultrasound scanning to measure carcass traits. Students also assist in scoring and evaluating bulls, gaining a deeper understanding of how structural soundness, performance data, and genetic information all come together to determine a bull's value within a breeding program.

For WBIA, this partnership represents far more than simply getting help to run the test. The association is deeply committed to helping develop the next generation of leaders in the beef industry. By working directly with students at Pioneer Farm, WBIA provides valuable opportunities for hands-on learning that cannot be replicated in a classroom alone.

Students leave the experience with a stronger understanding of performance testing, beef cattle management, and the importance of data-driven decision making in modern cattle production. Many go on to careers in seedstock operations, commercial cattle production, nutrition, genetics, or other sectors of the beef industry, carrying with them the knowledge gained through their involvement with the WBIA bull test.

WBIA is proud to partner with the University of Wisconsin–Platteville and its students. The collaboration not only strengthens the bull test program but also helps ensure the future of the beef industry by investing in the education and development of tomorrow's cattle producers and industry professionals.

Through this partnership, the Pioneer Farm bull test becomes more than a performance evaluation—it becomes a learning laboratory where students, producers, and industry leaders work together to advance the genetics, management, and future of the beef industry.



**WISCONSIN BEEF
IMPROVEMENT ASSN.**

Viewing of bulls in the pens at the facility through April 4th at 10:45 am is encouraged! Pens are outside and accessible at your convenience. Enter pens at your own risk. Individual bull videos are online at **DVAuction.com** and **wisconsinbeef.com**. Sale day supplement sheets with updates will be available on our DV sale site as well as on location the morning of the sale.

Internet bidding through DVAuction is encouraged. **Bidders must be approved and create an account by April 3rd. This can be done online at DVAuction.com or by phone at 402-316-5460.**

DV is Click to bid or proxy bid ONLY and requires a good internet connection. Auction April 4th will be carried live online at DVAuction.com starting at 11 am. A bidding tutorial is available at DVAuction.com.

Phone bids will be accepted during the sale. **Bidders may contact WBIA at 608-342-1119 to get a buyer number and discuss lot numbers.** Leave contact information on the answering machine through April 3rd.

WBIA representatives will be available to call back to confirm orders and/or deliver your bid by phone during the auction. Purchases may be picked up immediately following the close of the auction. **See phone bank on inside cover in bold.**

Bulls can be picked up weekdays from 8 am-4 pm or weekends by appointment. Please call 608-342-1850 or 608-342-1119 to schedule pick up. **Settlement required before release of any bull.**

For WBIA gear, check out our online store at
<https://brandedshowgearonlinestores.com/pages/wbia>

SALE ORDER – established by Consultant and Board of Directors

ID	BREED	PEN	ID	BREED	PEN	ID	BREED	PEN	ID	BREED	PEN
2	AN	1	48	AN	4	15	AN	2	74	AN	5
4	%SIM	1	46	%SIM	4	20	AN	2	72	AN	5
3	%SIM	1	50	CHAR	4	26	SIM	2	70	AN	5
8	SIM	1	58	HER	4	25	AN	2	73	AN	5
10	AN	1	59	SIM	4	24	%SIM	2	64	AN	5
18	SIM	2	6	AN	1	23	AN	2	69	AN	5
22	CHAR	2	9	SIM	1	17	SIM	2	75	LIM	5
12	%SIM	2	7	SIM	1	19	%SIM	2	76	HER	6
27	AN	2	11	AN	1	31	RAN	3	87	HER	6
21	RAN	2	71	SIM	5	35	AN	3	79	SIM	6
84	RAN	6	65	SIM	5	42	RAN	3	77	RAN	6
39	SIM	3	61	AN	5	38	AN	3	82	AN	6
30	AN	3	66	RAN	5	40	AN	3	83	RAN	6
37	SIM	3	67	AN	5	32	AN	3	86	SIM	6
33	SIM	3	62	AN	5	28	AN	3	82	AN	6
43	AN	3	63	AN	5	44	CHAR	4	88	AN	6
34	%SIM	3	81	%SIM	6	55	AN	4	90	AN	6
47	SIM	4	85	SIM	6	53	AN	4	78	RAN	6
57	AN	4	80	SIM	6	51	AN	4	91	AN	6
52	AN	4	89	SIM	6						

General Information: Terms and Conditions

Terms: Terms of the sale are cash. Each bull will be sold to the highest bidder. The Auctioneer will settle any dispute as to bids. Bulls must be paid for by the buyer before being released. Each bull will be at the buyer's risk as soon as sold but will be cared for by the management for a reasonable time until he is loaded.

Registration: Certificates will be transferred to the buyer at the seller's expense.

Guarantee: WBIA will guarantee the libido of sale bulls according to the following provisions. Bulls will be guaranteed breeders by WBIA from sale day until August 1, approximately 110 days, provided the bull(s) have been properly managed & are in good health as diagnosed by a licensed veterinarian. The first \$2800 of the purchase price will be considered the salvage value of any sale bull & will not be reimbursed by WBIA. WBIA will cover the sale price of any non-breeder, as determined by the pregnancy status of exposed cows; up to \$5400 **provided** a replacement bull is purchased from any current WBIA member. Reimbursement formula used will be, Purchase Price minus Salvage Value (\$2800) for a total possible maximum reimbursement of \$2600. The money from this guarantee will be paid directly to the seller of the replacement bull, at the direction & consent of the buyer & the seller, & will be used to offset the purchase price of the replacement bull. Replacement bull price will be negotiated between buyer & seller. Replacement bull costs exceeding the WBIA guarantee will be paid by the buyer directly to the seller. If desired, the buyer may apply any reimbursement value toward the purchase of any bull at the next WBIA Annual Bull Sale. In this event, the reimbursement would be in the form of a credit to offset the auction price. WBIA President, Allan Arndt &/or any Board member(s) must be notified **FIRST** to start the replacement process. Unforeseen conditions will be addressed by & decided by WBIA Board action. Failure to breed due to injury or exhaustion is not covered. This guarantee is not an insurance policy.

Health: Bulls will be tested for TB, Bangs & Anaplasmosis only if required. Interstate health papers will be furnished on sale day. WBIA does not warrant bulls to be free of Johnes. Any warrant is between buyer and seller.

Bids: Sealed bids may be sent to the Auctioneer, Ring men, Station Management, or any member of the WBIA Board of Directors. Sealed bids will be handled with strict confidence. **Sale day phone bids will be accepted at numbers listed in bold on inside cover.** Bidding is available through DV Auction. **It is required to register in advance for prior approval and a bidding number at (402) 316-5460 or support@dvauction.com**

Announcements: Auction box announcements will take precedence over the printed materials in this catalog.

Obligation: It shall be expressly understood that all people who attend this sale do so at their own risk. The Wisconsin Beef Improvement Association & the University of Wisconsin & its employees assume no liability, legal or otherwise, for accidents which may occur, & the terms of the sale shall constitute a contract between Buyer & Seller.

Requirements: The minimum requirements for entry into the test are 2.5 lbs WDA. Bulls failing breeding soundness exams, as established by the Society of Theriogenology, have been eliminated from the sale. Overall performance in conjunction with structural soundness has been evaluated by the consultant and board of directors. All bulls offered are believed to be sound. Since there are wide differing opinions as to what structural soundness or unsoundness is, the final determination lies with the buyer. All bulls must be DNA tested to verify parentage.

Ration: All bulls were fed a TMR balanced with dry hay, oatlage, cracked corn, dried distillers' grain and a balancer mix, ad libitum, once a day.

General Considerations: Performance testing bulls in a central test station does not improve the bulls being tested. Its purpose is to aid in identifying bulls which are superior in growth performance. Even under the best possible conditions at a central test station, not all pre-test environmental effects can be eliminated. Therefore, small differences in measurements are not very meaningful. The only reasonable assumption is to assume that all bulls had an equal opportunity.

Post Sale: Bulls may stay at the test station for up to **20 days after the sale for a nominal charge of \$5.00/day. Bulls must be picked up BY APRIL 24th.** Please indicate your intentions when you pay for your bull. During this time bulls will be fed a maintenance ration and UW-Platteville Pioneer Farm is not liable for your bulls. To schedule pick up, please contact Pioneer Farm at 608-342-1850. Pick up is available M-F 8 – 4 pm or by appointment.

INDEX OF CONSIGNORS FOR 2025-2026 Bull Test

Angus.....	Adams, Arnold & Alicia	Red Angus.....	Adams, Arnold & Alicia
Angus.....	Bonte, Dan & Lana	Red Angus.....	Dunphy, Joe & Sue
Angus.....	Chadwick, Mike	Red Angus.....	Habeck, Paul
Angus.....	Fremstad, Jory	Red Angus.....	Johnson, Brad & Lindsay
Angus.....	Johnson, Brad & Lindsey	Red Angus.....	Johnson, Kevin
Angus.....	Kuhle, David	Red Angus.....	O'Connell, Ryan
Angus.....	Kuhn, Mark & Ruth	Red Angus.....	Roecker, John
Angus.....	Kunde, Richard & Susan	% Simmental.....	Brown, Philip
Angus.....	Lynch, Kirk	% Simmental.....	Cavadini, Tim & Sarah
Angus.....	Marsh, Jim & Holly	% Simmental.....	Lundell, Tim
Angus.....	McNett, Matt	% Simmental.....	Nelson, Kurt & Nettie
Angus.....	Morrisette, Jeff	% Simmental.....	Pionek, Brian & Mackenzie
Angus.....	Pieper, John	% Simmental.....	Stichert, Wade
Angus.....	Ryan, Tim	Simmental.....	Arndt, Allan
Angus.....	Schmitt, Rob	Simmental.....	Bobeck, Jeremy
Angus.....	Spring Creeks Cattle	Simmental.....	Brown, Philip
Angus.....	Solverson, Matt & Abigail	Simmental.....	Gerlach, Trent
Angus.....	Strasburg, Andy & Amy	Simmental.....	Kimball, Justin & Ashley
Charolais.....	Adams, Jake & Regan	Simmental.....	Lundell, Tim
Charolais.....	Kempel, Justin & Jason	Simmental.....	Pionek, Brian & Mackenzie
Hereford.....	Ahrens, Caleb & Alissa	Simmental.....	Reinhardt, Kent & Wendy
Hereford.....	Miller, Matt	Simmental.....	Reinhardt, Marcus & Liz
LimFlex.....	Roecker, John	Simmental.....	Williams, Rod

<https://redangus.org> www.angus.org www.simmental.org <https://hereford.org> <https://half.org>
<https://charolaisusa.com>

For information on specific bulls contact Greg Miller, 608-778-8785

For information/catalog requests or general questions, contact Alicia Prill-Adams, 608-642-6982

All the information contained in the catalog plus pictures and video are available at the WBIA website at

<http://wisconsinbeef.com/home.html>

For WBIA gear, check out our online store at

<https://brandedshowgearonlinestores.com/pages/wbia>

WBIA is not responsible for any inadvertent errors/or omissions to this catalog.

Management of Yearling Bulls

Pre-breeding Management

- **Provide access to dirt lots of 1 to 2 acres in size to allow for ample exercise prior to the breeding season. This is IMPERATIVE. Bulls that are physically fit will have a higher degree of sexual drive and will remain sound.**
- Allow bull to adjust to new environment for 60 days prior to breeding season.
- To keep the bulls in good condition, a ration which contains 11-12% crude protein and 70% TDN from medium quality hay along with some grain supplementation, should be provided.

Breeding Season Management

- **DO NOT OVERUSE A YOUNG BULL DURING HIS FIRST BREEDING SEASON. "Rule-of-thumb" for the proper bull to female ratio is 1 cow per month of age of the bull up to 3 years of age. For example, a 15-month old bull could be run with 15 females. A mature 3-year old bull (36 months of age) should be allotted a maximum 36 females.**

Age of Bull	Number of Females Exposed
12-15	10-12
15-18	12-18
18-24	18-25
24 mo. & older	25-40

- The young bull is still growing, and therefore may need to be provided some extra feed during the breeding season. Monitor the bull's body condition: if the bull is starting to lose condition, increase the amount of feed provided. Do not over condition.
- Observe the bull closely during the breeding season to ensure the bull is servicing the females, ideally observing the cows once to twice daily. Record the initial service date. If the female was not bred, she should begin cycling 15 - 25 days from that initial service date. It is important to monitor bulls for normal breeding behavior and to catch an injury early to prevent missed breeding opportunities.

Post-Breeding Management

- Evaluate the bulls' condition and, if needed, feed and manage them in such a way that they will be in moderate condition, a body condition score of 6 at the beginning of the next breeding season.

Bulls Are Guaranteed By The Breeder To Be Breeders If Well Managed. It is strongly encouraged that bulls be allowed ample exercise on dirt lots PRIOR to the beginning of breeding season. FOR SAFETY REASON ALL BULLS WILL ONLY BE LOADED UPON COMPLETION OF THE SALE!

***DO NOT BLOCK THE BRIDGE OR IMPEDE TRAFFIC ON COLLEGE FARM ROAD.
BUYERS ARE NOT ALLOWED TO RETRIEVE THEIR OWN BULLS FROM THE LOTS
PRIOR TO OR DURING LOAD OUT.***

WBIA has transitioned away from a power index and is now developing bulls that are balanced not only in growth and performance but also EPDs and structure. Our consultant has evaluated the bulls' multiple times through the testing period for phenotype and structure. The board of directors and consultant have analyzed the bulls for performance, structure and marketability to make the final selection. WBIA Board takes great care to accurately report data gathered here. EPDs listed were current as of March 4, 2026.

Glossary of EPD's: EPDs are **BREED SPECIFIC** therefore comparing EPDs across breeds will not be accurate. Please note, we are not reporting the accuracy of the EPD but are reporting the percentage within the breed that the individual's EPDs fall. E.G. If the percent is listed as 30, then the individual's EPDs are in the top 30% of the breed for that trait or is better than 70% of the breed. If the percentage is listed as 70, then the individual's EPDs are in the top 70% of the breed for that trait or is better than 30% of the breed.

We have included the definitions from the Angus, Red Angus and Simmental Associations for reference. See definitions below for EPD's specific to Charolais, Hereford & LimFlex.

Expected Progeny Difference (EPD), is the prediction of how future progeny of each animal are expected to perform relative to the progeny of other animals listed in the database. EPDs are expressed in units of measure for the trait, plus or minus. Interim EPDs may appear on young animals when their performance has yet to be incorporated into the American Angus Association National Cattle Evaluation (NCE) procedures. This EPD will be preceded by an "I", and may or may not include the animal's own performance record for a particular trait, depending on its availability, appropriate contemporary grouping, or data edits needed for NCE.

Charolais Specific EPD's:

TSI (Terminal Sire Index) is a formal method of combining Expected Progeny Differences (EPD) – BW, WW, YW, REA, CW, MARB and FAT – into one single value on which to base selection decisions. The TSI uses estimates of the genetic relationships between traits with an economic default value based on three year rolling USDA data.

Hereford Specific EPD's:

BMI (Baldy Maternal Index) is a maternally focused index that has a production system based on 1,000-Hereford x Angus females with a progeny harvest endpoint directed toward Certified Hereford Beef (CHB®). It encompasses CE while also focusing on fertility and weaning weight. It puts more emphasis on IMF vs REA. This index is geared toward commercial programs that have British-cross cows.

§CHB (Certified Hereford Beef Index) terminally sire index with Hereford sired calves being marketed through the CHB market. Includes some CE with greater emphasis on WW, YW, REA & IMF.

Limousin Specific EPD's:

§MPI scenario when Limousin bulls are mated to Angus-based cows with replacements retained and surplus calves marketed at weaning. EPD's stressed include CED and MCE, WW, Milk, MW, DMI & ST

§IPI scenario when Limousin bulls are mated to Angus-based cows with replacements retained and surplus calves fed out and marketed on a value-based grid that rewards quality & yield. Balances both maternal and terminal traits.

§TPI is constructed to identify terminal sires that produce the highest profit potential fed cattle.

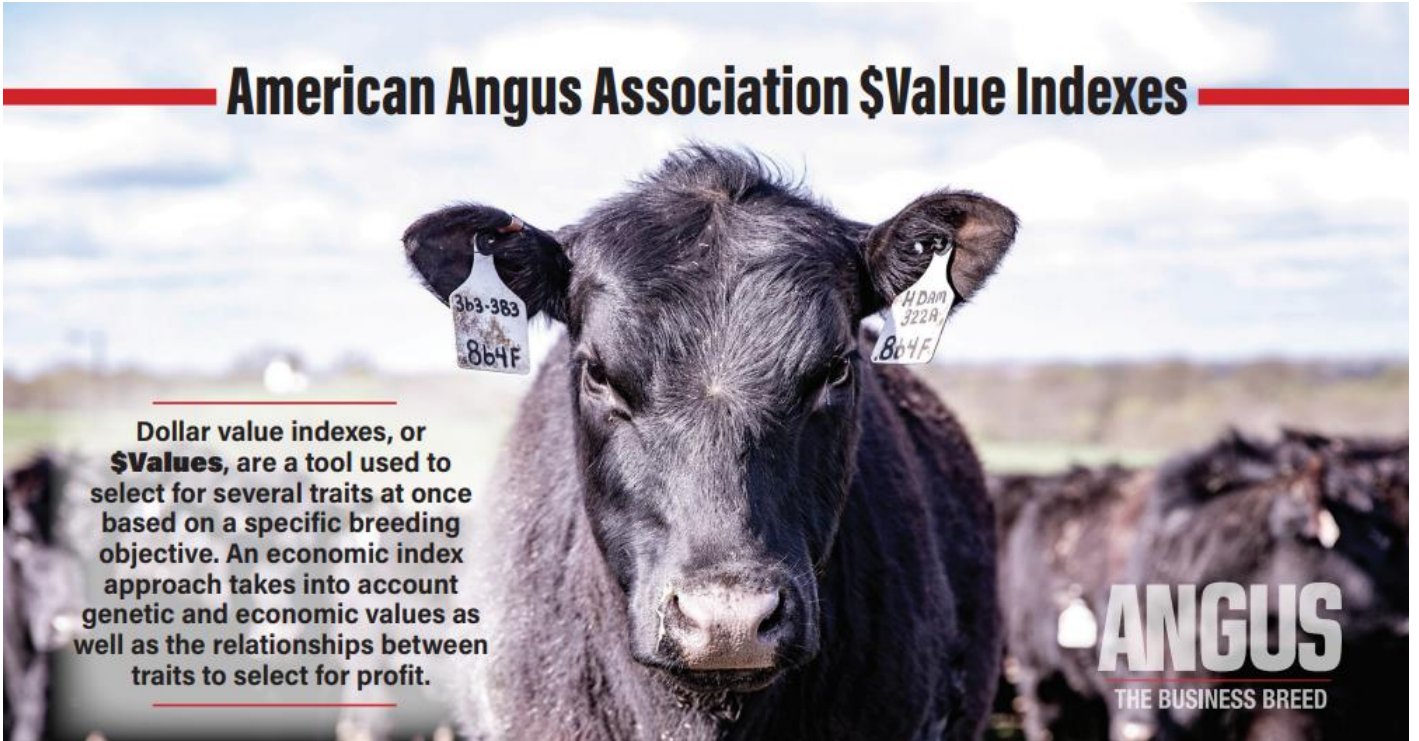
Videos of bulls are available at the DV Auction website.

Bidding is available through DV Auction. It is recommended to register in advance for prior approval and a bidding number at (402) 316-5460 or support@dvauction.com



WBIA is not responsible for any inadvertent errors/or omissions to this catalog.

American Angus Association \$Value Indexes



Dollar value indexes, or **\$Values**, are a tool used to select for several traits at once based on a specific breeding objective. An economic index approach takes into account genetic and economic values as well as the relationships between traits to select for profit.

ANGUS
THE BUSINESS BREED

Maternal Weaned Calf Value (\$M), an index expressed in dollars per head, predicts profitability differences in progeny due to genetics from conception to weaning. \$M is built off of a self-replacing herd model where commercial cattlemen replace 25% of their breeding females in the first generation and 20% in subsequent generations. Remaining cull females and all male progeny are sold as feeder calves. Increased selection pressure on \$M aims to decrease overall mature cow size and improve foot structure and fertility while maintaining weaning weights consistent with today's production.

Weaned Calf Value (\$W), an index expressed in dollars per head, provides the expected difference in future progeny preweaning performance from birth to weaning. \$W assumes that producers retain 20% of their female progeny for replacements and sell the rest of their cull female and male progeny as feeder calves. Over time, increased selection pressure on \$W will increase weaning and maternal milk traits while also continuing to increase mature cow size.

Cow Energy Value (\$EN), an index expressed in dollars per cow per year, assesses differences in cow energy requirements as an expected dollar savings difference in future daughters of sires. A larger value is more favorable when comparing two animals (more dollars saved on feed energy expenses). Components for computing \$EN savings differences include lactation energy requirements and energy costs associated with differences in mature cow size.

Feedlot Value (\$F), an index expressed in dollars per head, is the expected average difference in future progeny performance for post-weaning merit compared to progeny of other sires. The underlying objective assumes commercial producers will retain ownership of cattle through the feedlot phase and sell fed cattle on a carcass weight basis with no considerations of premiums or discounts for quality and yield grade.

Grid Value (\$G), an index expressed in dollars per carcass, is the expected average difference in future progeny performance for carcass grid merit, including quality and yield grade attributes, compared to progeny of other sires.

Beef Value (\$B), an index expressed in dollars per carcass, facilitates simultaneous multi-trait genetic selection for feedlot and carcass merit. \$B represents the expected average differences in the progeny postweaning performance and carcass value compared to progeny of other sires. This index assumes commercial producers wean all male and female progeny, retain ownership of these animals through the feedlot phase and market these animals on a quality-based carcass grid.

EPDS DIRECTLY INCORPORATED INTO EACH \$VALUE

TRAIT	MATERNAL			TERMINAL		
	\$M	\$W	\$EN	\$F	\$G	\$B
CED	✓					
BW		✓				
WW	✓	✓				
YW				✓		✓
CEM	✓					
Milk	✓	✓	✓			
MW	✓	✓	✓			
DOC	✓					
HP	✓					
Claw	✓					
Angle	✓					
DMI				✓		✓
CW				✓	✓	✓
RE					✓	✓
Marb					✓	✓
Fat					✓	✓

Red Angus Guide to EPDS and Indexes

ProS... Profitability and Sustainability is an all-purpose index that predicts average economic differences in all segments in the beef supply chain. This index is a combination of the breeding objectives modeled in the HerdBuilder and GridMaster selection indexes. In this index, replacement heifers are retained from within the herd and all remaining progeny are fed out to slaughter and sold on a quality-based grid. Traits included in this index include calving ease, growth, HPG, STAY, Mature Weight, Dry Matter Intake and carcass traits. The resulting index is expressed in dollars per head born (Index/High Value).

HB HerdBuilder is a maternal selection index that predicts the economic differences of animals for traits that are important from conception through weaning. Expressed as dollars per head born, HB is calculated based on the scenario that bulls are mated to heifers and cows, replacement heifers are retained and all remaining progeny are marketed at weaning. Traits included in the HB index include Calving Ease Direct, Calving Ease Maternal, Weaning Weight, Milk, Mature Weight, Heifer Pregnancy and Stayability (Index/High Value).

GM..... GridMaster is a selection index that predicts the average economic difference of non-replacement calves through the post-weaning phase of production. GM places selection pressure on growth, feedyard performance and carcass traits. Expressed as dollars per head born, GM is calculated based on the scenario that progeny are fed out to slaughter and marketed on a quality-based carcass grid. Traits included in GM include Average Daily Gain, Carcass Weight, Dry Matter Intake, Marbling, Back Fat and Rib Eye Area (Index/High Value).

CED Calving Ease Direct predicts differences in the percent of calves born unassisted out of 2-year-old dams. (Percent/High Value)

BW Birth Weight predicts differences in actual birth weight of progeny. (Pounds/Low Value)

WW Weaning Weight predicts differences in 205-day weaning weight. (Pounds/High Value)

YW Yearling Weight predicts differences in 365-day yearling weight. (Pounds/High Value)

ADG Average Daily Gain predicts differences in weight gain between 205 and 365 days of age. (Pounds/High Value)

DMI Dry Matter Intake predicts differences in daily feed intake as measured in a feedlot during the post-weaning period. (Pounds/Low Value)

MILK Milk predicts differences in weaning weight attributed to the milking ability of the animal's daughters. (Pounds/High Value)

ME Maintenance Energy predicts the difference in maintenance energy requirements. (Mcal per Month/Low Value)

HPG Heifer Pregnancy predicts differences in the percent of daughters who are able to conceive and calve at 2 years of age following exposure to breeding. (Percent/High Value)

CEM Calving Ease Maternal predicts differences in the percent of daughters who are able to calve unassisted as 2-year-old heifers. (Percent/High Value)

STAY Stayability predicts differences in the ability of an animals' retained daughters to remain productive in the herd – calve every year – through 6 years of age. (Percent/High Value)

MARB Marbling predicts differences in marbling score – amount of intramuscular fat measured at the 13th rib. (Marbling Score Units/High Value)

YG Yield Grade predicts differences in USDA Yield Grade, which is calculated using CW, REA and Fat. (Yield Grade Units/Low Value)

CW Carcass Weight predicts differences in actual hot carcass weight. (Pounds/High Value)

REA Ribeye Area predicts differences in square inches of ribeye area measured at the 13th rib. (Square Inches/High Value)

FAT Fat predicts differences in the depth of backfat measured between the 12th and 13th ribs. (Inches/Low Value)

RED ANGUS

RANCH TESTED. RANCHER TRUSTED.

RedAngus.org



Quick Reference Guide to

ASA EPDs and \$ Indexes

Expected Progeny Differences (EPDs)

EPDs are the most accurate and effective tool available for comparing genetic levels. In using EPDs, the difference between two sires' EPDs represents the unit difference expected in the performance of their progeny. For example, if sires A and B have EPDs of +10 and -5, a 15-unit difference would be expected in their progeny (moving from -5 to +10 yields 15 units). Key to using EPDs is knowing what units they are expressed in. If the above case referred to weaning weight EPDs, A would be expected to sire 15 pounds more weaning weight than B. If calv-

ing ease were the trait, A would be expected to sire 15 percent more unassisted births in first-calf heifers; in other words, if B sired 30 assists in a group of 100 heifers, we'd expect A to require 15 assists. A percentile-ranking chart is required to determine where a bull's EPDs rank him relative to other bulls in the breed. For percentile rankings or more detailed information about EPDs and \$ indexes, [visit www.simmental.org](http://www.simmental.org), then click **Industry Science/Tech Advancement**.

Listed below are the units ASA EPDs are expressed in:

All-Purpose Index (\$API): Dollars per cow exposed under an all-purpose-sire scenario. (See below for more details).

Back Fat (BF): Inches of backfat at 475 days.

Birth Weight (BW): Pounds of birth weight.

Calving Ease (CE): Percent of unassisted births when used on heifers.

Docility (DOC): Percent of offspring receiving a disposition score of 1 (docile).

Carcass Weight (CW): Pounds of carcass weight at 475 days.

Maternal Calving Ease (MCE): Percent of unassisted births in first-calving daughters.

Milk (MLK): Pounds of weaning weight due to milk.

Marbling (MRB): Marbling score at 475 days.

Maternal Weaning Weight (MWW): Pounds of weaning weight due to milk and growth.

Ribeye Area (REA): Square inches of ribeye.

Stayability (STAY): Percentage of daughters remaining in the cowherd at six years of age.

Terminal Index (\$TI): Dollars per cow exposed under a terminal-sire scenario. (See below for more details).

Weaning Weight (WW): Pounds of weaning weight.

Yearling Weight (YW): Pounds of yearling weight.

Yield Grade (YG): Yield grade score at 475 days.

\$ Indexes

Though EPDs allow for the comparison of genetic levels for many economically important traits, they only provide a piece of the economic puzzle. That's where \$ indexes come in. Through well-conceived, rigorous mathematical computation, \$ indexes blend EPDs and economics to estimate an animal's overall impact on your cowherd enterprise. The same technology that led to the dramatic progress in swine, poultry and dairy genetics over the last several decades was used to develop the following \$ indexes:

All-Purpose Index (\$API):

Evaluates sires for use on the entire cow herd (bred to both Angus first-calf heifers and mature cows) with the portion of their daughters required to maintain herd size retained and the remaining heifers and steers put on feed and sold grade and yield.

Terminal Index (\$TI):

Evaluates sire for use on mature Angus cows with all offspring put on feed and sold grade and yield.

Using \$API and \$TI:

First, determine which index to use; if you're keeping replacements use \$API, if not, \$TI. Then, just as with EPDs,

zero in on the unit difference between bulls. (As described above, index units are in dollars per cow exposed.) The difference can be used to determine how much a bull is worth compared to another. Or, put another way, how much you can pay for one bull compared to another. For example, when buying an all-purpose-type sire, you can quickly figure a bull scoring +100 for \$API is worth an extra \$6,000 over a +50 bull if both are exposed to 30 cows over 4 years ($\$50 \text{ diff.} \times 30 \text{ hd.} \times 4 \text{ yr.} = \$6,000$). A percentile-ranking chart is required to determine where a bull's index value ranks him relative to other bulls in the breed. For percentile rankings or more detailed information about EPDs and \$ indexes visit www.simmental.org.

Important disclaimer:

DO NOT compare index values of purebreds of different breeds, hybrids of different breed composition or purebreds with hybrids — our system was not developed to make valid comparison among these groups. Therefore, you must first determine the breed and breed composition appropriate for your herd and use index values to compare animals within that population.

2 **MC LADY GROWTH FUND 165** 21316905 2/14/2025 **ADG Ratio 103.1**
 MIKE CHADWICK CHADWICK ANGUS **COLOR** BLACK **WDA Ratio 113.4**
 360 JUNEBUG RD, MARSHALL, WI, 53559 608-279-2608 **% OF BREED** 100 **H/P/S P PEN 1**

ANGUS

BASIN PAYWEIGHT 1682
 DEER VALLEY GROWTH FUND
 DEER VALLEY RITA 36113
 SITZ UPWARD 307R
 MC LILY UPWARD 458
 BLACK LADY BISMARCK 351

EPD'S/ac										
CED/%	BW/%	WW/%	YW/%	MB/%	\$M	\$W	\$F	\$G	\$B	\$C
6	0.9	90	161	0.2	46	85	108	37	145	234
55	45	10	4	90	90	15	25	85	60	80

Performance									
WDA	ADG	REA	BF	% IMF	Frame	BIRTH WT	START WT	FINAL WT	
3.9	4.33	16.4	0.3	4.24	5.8	72	1065	1497	

Growth Fund has good yearling weight and weaning weight and is still one of the top 6 bulls to use at Select Sires.

3 **502N** 4572025 1/24/2025 **ADG Ratio 111.3**
 PHILLIP BROWN BROWN FARMS **COLOR** BLACK **WDA Ratio 104.6**
 5838 S. GRAS RD , ELIZABETH, IL, 61028 815-238-9033 **% OF BREED** 75 **H/P/S P PEN 1**

% SIMMENTAL

SFG SUNNY H0518
 L518 SAS
 SAS CHALLI J351
 THSF LOVER BOY B33
 ALYA FIONA
 BG1X

EPD'S/ac										
CED/%	BW/%	WW/%	YW/%	MILK/%	MCE/%	MWW/%	MB/%	REA%	API/%	
11.3	-.4	75.4	111.4	23.6	8	61.3	0.31	0.51	127.8	
54	44	59	68	53	34	58	64	79	65	

Performance									
WDA	ADG	REA	BF	% IMF	Frame	BIRTH WT	START WT	FINAL WT	
3.75	4.7	15.7	0.28	2.18	5.9	83	1047	1517	

4 **YOLO AXELROD 33N** 4553577 2/14/2025 **ADG Ratio 107.2**
 WADE STICHERT YOLO CATTLE **COLOR** BLACK **WDA Ratio 111**
 N5413 DIVISION AVE, CHILI, WI, 54420 715-897-3602 **% OF BREED** 50 **H/P/S P PEN 1**

% SIMMENTAL

BASIN PAYWEIGHT 1682
 DEER VALLEY GROWTH FUND
 DEER VALLEY RITA 36113
 WS BIG SHOT E187
 TECS 33H
 CDI MS HOMETOWN 203C

EPD'S/ac										
CED/%	BW/%	WW/%	YW/%	MILK/%	MCE/%	MWW/%	MB/%	REA%	API/%	
12.8	-.1	95	163.8	25.5	8.8	72.6	0.61	0.83	151.7	
43	48	8	3	38	21	13	23	25	30	

Performance									
WDA	ADG	REA	BF	% IMF	Frame	BIRTH WT	START WT	FINAL WT	
3.98	4.53	16.57	0.36	3.89	6.5	96	1075	1527	

Sired by the legendary Growth Fund, this guy has been a standout from early on. Pounds pay as the saying goes and 33N's performance on the test combined with his elite growth EPD's suggest he'll sire some calves that flat out grow. Dam had a bull on the sale last year which was well received. Bid with confidence. Homo black homo polled

6**MC LEGACY BLUEPRINT 135**

21330412

1/4/2025

ADG Ratio 123.3

MIKE CHADWICK

CHADWICK ANGUS

COLOR

BLACK

WDA Ratio 104.8

360 JUNEBUG RD, MARSHALL, WI, 53559

608-279-2608

% OF BREED

100

H/P/S P**PEN**

1

ANGUS

CONNEALY CONFIDENCE PLUS
 WOODHILL BLUEPRINT
 WOODHILL EVERGREEN Z291-B233
 AAR TEN X 7008 S A
 MC LEGACY TEN 154
 MILL COULEE BARBARA 417

EPD'S/ac										
CED/%	BW/%	WW/%	YW/%	MB/%	\$M	\$W	\$F	\$G	\$B	\$C
10	0.5	77	136	0.5	51	79	105	56	162	261
20	35	30	25	70	85	25	30	50	40	55

Performance									
WDA	ADG	REA	BF	% IMF	Frame	BIRTH WT	START WT	FINAL WT	
3.61	5.18	13.5	0.32	3.6	5.8	74	1015	1532	

This Woodhill Blueprint son is a great prospect for both cows and heifers.

7**GCCF MERIT 524N**

4554111

2/11/2025

ADG Ratio 96.6

TRENT GERLACH

GERLACH CATTLE COMPANY

COLOR

BLACK

WDA Ratio 108.1

10745 N WADDAMS GROVE RD, WINSLOW, IL,

608-426-4633

% OF BREED

75

H/P/S P**PEN**

1

SIMMENTAL

LLW CARD MERIT 03H
 LLW CARD MERIT 27L
 LLW CARD ANNA 327E
 WOOD RELENTLESS 941G ET
 MISS THOM 233
 MAY 1703

EPD'S/ac										
CED/%	BW/%	WW/%	YW/%	MILK/%	MCE/%	MWW/%	MB/%	REA%	API/%	
7.4	2.6	78.4	120.4	18.5	6	57.6	0.13	0.55	97.5	
76	75	53	46	83	45	75	58	96	95	

Performance									
WDA	ADG	REA	BF	% IMF	Frame	BIRTH WT	START WT	FINAL WT	
3.47	3.59	14.5	0.27	2.38	5.5	95	984	1342	

524N is a true power bull with real world growth in an attractive package. Sired by our Cardinal Merit son backed by one of the hottest up and coming cows in the Simmental breed LLW Card Anna 327E.

8**DBLA CARDINAL N521**

4520212

1/25/2025

ADG Ratio 87.6

ALLAN ARNDT

DOUBLE A SIMMENTALS

COLOR

RED

WDA Ratio 104.5

4509 S. BELDING RD, JANESVILLE, WI, 53546

608-774-0136

% OF BREED

100

H/P/S P**PEN**

1

SIMMENTAL

IR IMPERIAL D948
 HSF CARDINAL 133G
 HSF MISS SKY 59S 64Z
 KBHR SNIPER E036
 DBLA MS SNIPER H003
 DBLA MS F834

EPD'S/ac										
CED/%	BW/%	WW/%	YW/%	MILK/%	MCE/%	MWW/%	MB/%	REA%	API/%	
9.8	0.1	77.5	117.5	30.5	4.6	69.3	0.22	0.80	149.1	
51	27	59	53	10	70	26	41	69	30	

Performance									
WDA	ADG	REA	BF	% IMF	Frame	BIRTH WT	START WT	FINAL WT	
3.35	3.25	15.35	0.41	3.67	4.8	94	1030	1355	

DBLA Non-diluted Homozygous Polled Red bull with a 0 BWT EPD. Docility, MILK and STAY are his strengths, outstanding structure. Use him to sire your next replacements. Recommended for cows, heifers with discretion. No creep

9**DBLA AUTOGRAPH N512**

4520205

1/21/2025

ADG Ratio 105.1

ALLAN ARNDT

DOUBLE A SIMMENTALS

COLOR BLACK**WDA Ratio 107.1**

4509 S. BELDING RD, JANESVILLE, WI, 53546

608-774-0136

% OF BREED 100**H/P/S P PEN 1****SIMMENTAL**

GIBBS 9114G ESSENTIAL

GIBBS SIGNATURE 2510K

GIBBS 7077E LOUISE Y534

RFS BULLETPROOF B42

DBLA MS BULLETPROOF G933

DBLA MS TAYLOR D655

EPD'S/ac									
CED/%	BW/%	WW/%	YW/%	MILK/%	MCE/%	MWW/%	MB/%	REA%	API/%
15.1	-1.7	98.2	155.5	32	7.4	81	0.37	1.12	178.2
8	8	6	4	6	24	2	22	10	4

Performance									
WDA	ADG	REA	BF	% IMF	Frame	BIRTH WT	START WT	FINAL WT	
3.44	3.9	18.8	0.29	3.27	5.5	78	1012	1402	

DBLA Homozygous polled Red carrier. Best EPD profile we've ever raised! 16 of 19 measured traits in the TOP 35%, including TOP 10% for CE, BWT, WW, YW, MILK, STAY, API and TI. Outstanding structure, recommended for cows and heifers. No creep

10**S/A ASTUTE 012-1305**

21367637

1/16/2025

ADG Ratio 115

ANDY & AMY STRASBURG

STRASBURG ANGUS

COLOR BLACK**WDA Ratio 106.5**

6709 STATE RD 73, MARSHALL, WI, 53559

608-444-2637

% OF BREED 100**H/P/S P PEN 1****ANGUS**

SITZ ACCOMPLISHMENT 720F

WOODHILL TROOPER H062-L045

WOODHILL EMPRESS D118-H062

CRAWFORD GUARANTEE 9137

S/A MAIDEN 1238-012

S/A MAIDEN 3276-1238

EPD'S/ac										
CED/%	BW/%	WW/%	YW/%	MB/%	\$M	\$W	\$F	\$G	\$B	\$C
9	0.8	76	138	0.7	57	61	95	53	149	250
30	40	30	25	50	75	60	50	55	55	65

Performance									
WDA	ADG	REA	BF	% IMF	Frame	BIRTH WT	START WT	FINAL WT	
3.66	4.83	13.8	0.32	4.79	5.1	79	1030	1512	

1305 is a calving ease bull that has performed well above average on test. 1305's dam is a larger framed female with an exceptional udder.

11**6-S STEPUP**

21358410

2/15/2025

ADG Ratio 101.6

ROB SCHMITT

COLOR BLACK**WDA Ratio 105.7**

PO BOX 62, SHERRILL, IA, 52073

563-543-1934

% OF BREED 100**H/P/S P PEN 1****ANGUS**

G A R BIG STEP K715

EZAR STEP UP 9178

BASIN LUCY 4261

RB TOUR OF DUTY 177

SCHMITT'S TOUR OF DUTY 846

PITZ MISS SPARKY 3130

EPD'S/ac										
CED/%	BW/%	WW/%	YW/%	MB/%	\$M	\$W	\$F	\$G	\$B	\$C
-2	3.7	76	129	0.7	83	65	110	61	172	306
95	95	30	40	50	20	50	25	40	30	25

Performance									
WDA	ADG	REA	BF	% IMF	Frame	BIRTH WT	START WT	FINAL WT	
3.64	4.27	14.3	0.39	3.45	5.8	88	966	1392	

12**D3C WOODFORD OCEAN N139G**

4569338

2/6/2025

ADG Ratio 99.3

BRIAN & MACKENZIE PIONEK DIAMOND COULEE CATTLE

COLOR BLACK**WDA Ratio 95.8**

87535 MARSHALL AVE, STRUM, WI, 54770

920-217-1610

% OF BREED 75**H/P/S P PEN** 2**% SIMMENTAL**

EGL FIRESTEEL 103F
 WHF/JS/CCS WOODFORD J001
 WHF SUMMER 365C
 BAR QH STEP UP D349
 D3C SUSON SEALED G139
 SECRET D13

EPD'S/ac									
CED/%	BW/%	WW/%	YW/%	MILK/%	MCE/%	MWW/%	MB/%	REA%	API/%
16.6	-2.7	65.2	91.1	24.6	6.3	57.1	0.51	0.59	150.4
12	14	88	94	44	58	79	34	65	30

Performance									
WDA	ADG	REA	BF	% IMF	Frame	BIRTH WT	START WT	FINAL WT	
3.43	4.19	14.94	0.24	3.36	5.3	87	926	1345	

This is exactly what we were looking for with this mating, come easy, grow like crazy with just enough chrome coming from his google eyed dam. Expect some white on the calves out of this guy.

15**JFCC FAITHFUL 559**

21223450

3/3/2025

ADG Ratio 105.6

BRAD & LINDSAY JOHNSON JOHNSON FAMILY CATTLE

COLOR BLACK**WDA Ratio 112.1**

N6864 BOX ELDER RD, SHAWANO, WI, 54166

715-498-9328

% OF BREED 100**H/P/S P PEN** 2**ANGUS**

PHCA VERACIOUS
 44 FAITHFUL 2764
 DCF RUBY OF TIFFANY 6799
 WELYTOK PRIME TIME
 PEAK SUSANNA K203
 PINEVIEW SUSANNA H161

EPD'S/ac										
CED/%	BW/%	WW/%	YW/%	MB/%	\$M	\$W	\$F	\$G	\$B	\$C
4	3.6	96	167	1.7	42	72	159	108	268	390
70	95	2	2	3	95	35	1	3	1	1

Performance									
WDA	ADG	REA	BF	% IMF	Frame	BIRTH WT	START WT	FINAL WT	
3.86	4.43	15.3	0.34	7.28	6.8		972	1415	

A Faithful son out of our PEAK donor that has a set of EPDs to blow you away. The only two maternal sibs to sell, sold for \$35,000 and \$11,000. 559 is a powerful bull with top big time WW, YW, RADG, MW, MH, MARB, CW, \$F, \$B, \$G, and elite \$C. He also posts a massive RE EPD!

17**RW IN CHARGE 516N**

4570457

1/18/2025

ADG Ratio 88.9

ROD WILLIAMS

COLOR BLACK**WDA Ratio 98.2**

3380 WHITE POLE RD , STUART, IA, 50250

515-314-1910

% OF BREED**H/P/S P PEN** 2**SIMMENTAL**

HOOK'S EAGLE 6E
 KSU BALD EAGLE 53G
 KSU MISS SHEAR FORCE 9Z
 LONGS THE PLAYER
 PLAYER 013H
 RW ZAYLIE 362A

EPD'S/ac									
CED/%	BW/%	WW/%	YW/%	MILK/%	MCE/%	MWW/%	MB/%	REA%	API/%
11.9	-.7	64.0	88.5	20.3	5.9	52.3	0.42	0.82	141.4
28	17	95	97	73	47	93	17	60	40

Performance									
WDA	ADG	REA	BF	% IMF	Frame	BIRTH WT	START WT	FINAL WT	
3.15	3.3	13.93	0.31	3.71	5.7	81	965	1295	

516N is a son of the now deceased KSU Bald Eagle, a top 50 used sire in the ASA for numerous years. Reading like the true heifer-safe bull he is, he supports a 12 CE with a -.6 BW and he's backed on the bottom side by one of our most proven cows, RW Zaylie362A. She is a true outlier when it comes to udder quality and longevity. This bull's pedigree has already passed the test, it's worked on operations across the nation, let it go to work for you.

18**RW IN CHARGE 529N**

4570458

2/12/2025

ADG Ratio 143.1

ROD WILLIAMS

COLOR BLACK**WDA Ratio 121.9**

3380 WHITE POLE RD , STUART, IA, 50250

515-314-1910

% OF BREED 100**H/P/S P PEN 2****SIMMENTAL**

SO REMEDY 7F
 SFI LONGS IN CHARGE K28
 SFI MISS ME O MY
 LONG'S SHEAR PLEASURE
 RW MARLEY 559C
 RWREPLAY718T

EPD'S/ac									
CED/%	BW/%	WW/%	YW/%	MILK/%	MCE/%	MWW/%	MB/%	REA%	API/%
8.7	2.7	80.7	125.8	28.1	5.5	68.5	-.14	1.08	103.5
62	76	44	37	18	53	28	97	15	95

Performance									
WDA	ADG	REA	BF	% IMF	Frame	BIRTH WT	START WT	FINAL WT	
3.91	5.31	16.73	0.31	2.35	6.3	84	979	1510	

A commercial cattleman's kind! This bull has set himself apart in the test data base, and the return on investment is a no brainer! 529N is leading all simmental bulls in overall ADG at 4.71 and WDA at 3.67. Backed by a 16.74 REA, putting him 2nd in the breed. The In Charge blood line outperforms and is recognized across the nation, with sons sold for up to \$27,000. And it's not the sons that perform - 26 head of commercial heifers bred to In Charge averaging \$5,600 in MN this January!

19**LDL DIABLO N1047**

4553936

2/23/2025

ADG Ratio 94

TIM LUNDELL

LUNDELL FAMILY CATTLE

COLOR BLACK**WDA Ratio 98.3**

1190 GOLDMAN LANE, LIVINGSTON, WI, 53554

608-341-8296

% OF BREED 50**H/P/S P PEN 2****% SIMMENTAL**

LCDR FAVOR 149F
 LCDR DILIGENCE 215J
 LCDR MS GIA 5G
 QUIET'S UNDERWRITER 412
 WHITCOMB SALLY 5362
 EXAR BLACKCAP 5362

EPD'S/ac									
CED/%	BW/%	WW/%	YW/%	MILK/%	MCE/%	MWW/%	MB/%	REA%	API/%
9.6	0.6	95.4	156.8	24.8	7.3	72.7	0.51	1.02	146.3
69	63	7	5	43	45	13	34	7	35

Performance									
WDA	ADG	REA	BF	% IMF	Frame	BIRTH WT	START WT	FINAL WT	
3.52	3.97	14.81	0.28	2.1	6.1	83	923	1320	

An extremely attractive Simm/Angus son of LCDR Diligence, this bull was our No. 1 weaning-weight bull, posting an impressive 753 lbs. with a WW ratio of 120. He stands on an excellent set of feet and legs and combines muscle with an easy-keeping design. This bull is sure to impress on sale day. Homozygous black and homozygous polled.

20**MC BARBARA GROWTH FUND 115**

21316906

1/15/2025

ADG Ratio 106.9

MIKE CHADWICK

CHADWICK ANGUS

COLOR BLACK**WDA Ratio 90.4**

360 JUNEBUG RD, MARSHALL, WI, 53559

608-279-2608

% OF BREED 100**H/P/S P PEN 2****ANGUS**

BASIN PAYWEIGHT 1682
 DEER VALLEY GROWTH FUND
 DEER VALLEY RITA 36113
 RB ACTIVE DUTY 010
 MILL COULEE BARBARA K 850
 MILL COULEE BARBARA K 905

EPD'S/ac										
CED/%	BW/%	WW/%	YW/%	MB/%	\$M	\$W	\$F	\$G	\$B	\$C
7	1.6	71	127	0.1	36	66	86	17	103	170
45	60	45	40	95	95	50	70	95	95	95

Performance									
WDA	ADG	REA	BF	% IMF	Frame	BIRTH WT	START WT	FINAL WT	
3.11	4.49	13.1	0.33	2.72	4.3	76	839	1287	

This is an embryo calf from Mill Coulee Barbara K850 Dam and Mill Coulee Barbara 905 grand dam.

21 **SRN REMEDY 2531** 5125577 2/3/2025 **ADG Ratio 98.1**
 JOE & SUE DUNPHY SHAMROCK NOOK RED ANGUS **COLOR RED WDA Ratio 101.8**
 W646 STATE RD 59, ALBANY, WI, 53502 608-558-5342 **% OF BREED 100 H/P/S P PEN 2**

REDANGUS

ALC RELIANCE H39
 ALC REMEDY K60
 ALC MISS AUTHORITY G911
 SRN KODIAK 1804
 SRN ELLE 2075
 SRN ELEANOR 1874

EPD'S/ac									
CED/%	BW/%	WW/%	YW/%	MILK/%	STAY/%	REA/%	HB/%	GM%	PRO/%
15	-2	69	99	25	20	0.45	100	35	135
29	47	40	63	53	4	6	1	84	14

Performance									
WDA	ADG	REA	% BF	IMF	Frame	BIRTH WT	START WT	FINAL WT	
3.29	3.64	15.8	0.4	2.51	4.1	78	936	1300	

Sired by ALC Remedy K60, SRN Remedy 2531, offers a powerful genetic prescription for progress, ranking at the very top of the Red Angus breed for the HB Index. He is a true herd remedy in every sense of the word. He pairs that elite profitability with standout EPDs, delivering calving ease, longevity, and added carcass value in one complete package. Backed by the productive Eleanor cow family, his grand dam, SRN Eleanor X11, raised an impressive set of triplet heifers. Lot 21 brings both performance and maternal strength to the forefront.

22 **AHAA AUTHORITY 2502** EM1014987 3/6/2025 **ADG Ratio 116.3**
 JAKE & REGAN ADAMS **COLOR WHITE WDA Ratio 107.3**
 1314 HWY 6, WEST LIBERTY, IA, 52776 608-642-0445 **% OF BREED 100 H/P/S P PEN 2**

CHAROLAIS

LHD CHOTEAU B1669
 LT AUTHORITY 7229
 LT KATY 4273
 LT RUSHMORE 8060
 WC DREAM GIRL 6243
 WC MISS VALUE 2213

EPD'S/ac									
CED/%	BW/%	WW/%	YW/%	MILK/%	MCE/%	CW/%	MB/%	REA/%	TSI/%
14.5	-3.7	61	110	19	8.3	12	0.2	0.51	244
25	15	65	65	85	65	95	35	90	95

Performance									
WDA	ADG	REA	BF	IMF	Frame	BIRTH WT	START WT	FINAL WT	
3.86	4.85	16.3	0.26	2.4	7.2	90	920	1405	

Offering our last son of Wright Charolais' prolific donor WC Dream Girl 6243, whose flush brothers were extremely popular during the 2024 WBIA sale. We feel we have saved the best for last because he has more style, growth and is structurally sound and docile. A versatile bull who will add all the maternal aspects of Dream Girl while also giving you the terminal performance you need to make \$\$\$. His sire, LT Authority 7229, is known for his moderate birth weights and added maternal qualities.

23 **R R A DYNAMIC 25B03** 21349113 2/7/2025 **ADG Ratio 103.7**
 JOHN PIEPER **COLOR BLACK WDA Ratio 100.7**
 7376 E. CEDARVILLE RD, ROCK CITY, IL, 61070 815-238-6270 **% OF BREED 100 H/P/S P PEN 2**

ANGUS

DEER VALLEY GROWTH FUND
 B A R DYNAMIC
 B A R BLACKCAP 7235-B0048
 MEAD MAGNITUDE
 R R A EVERELDA ENTENSE 19B03
 R R A EVERELDA ENTENSE T003

EPD'S/ac										
CED/%	BW/%	WW/%	YW/%	MB/%	\$M	\$W	\$F	\$G	\$B	\$C
16	-1	93	156	0.9	77	103	88	69	157	281
2	10	4	10	35	30	1	65	25	45	40

Performance									
WDA	ADG	REA	BF	IMF	Frame	BIRTH WT	START WT	FINAL WT	
3.47	4.35	14	0.45	4.98	5.6	76	920	1355	

This bull has calving ease, weaning weight, and yearling weight all in the same package. Top 2% for calving ease and top 10% or better for WW and YW. This bull descends from the Sitz Everelda Entense Cow family on the bottom side and is sired by the calving ease and carcass quality bull BAR Dynamic on the top side. One of the high performers for average daily gain while on this test.

24**ASPEN HILLS FARM WOLVERINE 37**

4517720

3/20/2025

ADG Ratio 72.5

TIM & SARAH CAVADINI ASPEN HILLS FARM

COLOR BLACK**WDA Ratio 95.7**

N7966 CTY RD C, MINDORO, WI, 54644

608-396-1202

% OF BREED 50**H/P/S P PEN 2****% SIMMENTAL**

TEHAMA TAHOE B767
 SAT WOLVERINE 916
 SAT PRAIRIE 788
 EKHCC BLACK DIAMOND 147
 EKHCC TARA 318
 EKHCC TARA 954

EPD'S/ac									
CED/%	BW/%	WW/%	YW/%	MILK/%	MCE/%	MWW/%	MB/%	REA%	API/%
10.6	-6	63.7	93.4	26.8	7.4	58.8	0.24	0.66	120
63	40	93	91	29	43	73	75	55	75

Performance									
WDA	ADG	REA	BF	% IMF	Frame	BIRTH WT	START WT	FINAL WT	
3.43	3.06	15.19	0.24	3	6.3	62	894	1200	

Sired by the Select Sires bull SAT Wolverine, and grandsire, Tehama Tahoe, you can feel at ease using him on your heifers. He is a double-digit calving ease bull, labeled as a cowmaker because he can improve teat and udder quality, as well as foot structure, as you build your herd. This bull's 12 year old dam has excellent maternal strengths and has always raised quality calves. I'm fairly confident to say that once you meet his offspring, you'll choose to keep some back to improve the genetics in your herd.

25**SPRING CREEKS THUNDERSTRUCK 072**

21437107

3/17/2025

ADG Ratio 85.4

BART MITCHELL SPRING CREEKS CATTLE

COLOR BLACK**WDA Ratio 101.9**

48715 HILLDALE RD, WAUZEKA, WI, 53826

608-553-8070

% OF BREED 100**H/P/S P PEN 2****ANGUS**

CONNEALY THUNDER
 BOYD THUNDERSTRUCK
 BOYD ABIGALE 6079
 BALDRIDGE COLONEL C251
 CORNERSTONE LADY 572-072
 CORNERSTONE LADY 421E-572

EPD'S/ac										
CED/%	BW/%	WW/%	YW/%	MB/%	\$M	\$W	\$F	\$G	\$B	\$C
7	0.3	70	115	0.5	82	84	77	45	122	240
45	30	50	60	70	20	15	85	70	85	75

Performance									
WDA	ADG	REA	BF	% IMF	Frame	BIRTH WT	START WT	FINAL WT	
3.51	3.59	15.2	0.45	3.97	5.2	74	879	1237	

This is a thick made powerful bull that will impress you sale day. His dam has a wonderful udder, has a daughter in our herd, as well as raised bulls for our annual bull sale. He sells with a Spring Creeks breeding guarantee. We believe this bull has a lot to offer.

26**DBLA BASELINE N508**

4520178

1/19/2025

ADG Ratio 95.7

ALLAN ARNDT DOUBLE A SIMMENTALS

COLOR BLACK**WDA Ratio 97.7**

4509 S. BELDING RD, JANESVILLE, WI, 53546

608-774-0136

% OF BREED 100**H/P/S P PEN 2****SIMMENTAL**

HOOK'S BEACON 56B
 KBHR HIGH ROAD E283
 WS MISS SUGAR C4
 DBLA WIDEBODY F807
 DBLA MS J176
 DBLA MS F826

EPD'S/ac									
CED/%	BW/%	WW/%	YW/%	MILK/%	MCE/%	MWW/%	MB/%	REA%	API/%
14	-9	83.2	126	25.1	7.4	66.8	0.24	1.10	145.6
13	16	37	36	38	24	34	39	13	35

Performance									
WDA	ADG	REA	BF	% IMF	Frame	BIRTH WT	START WT	FINAL WT	
3.13	3.55	13.75	0.25	3.08	4.7	78	930	1285	

DBLA Homozygous Black Homozygous Polled. Minus BWT EPD with heifer worthy CE. WW, YW, Maternal and carcass EPDs above breed average. Rock solid predictability. Safe for heifers and practical for cows. No creep

27 **RC TOP GUN 134** 21304891 1/27/2025 **ADG Ratio 98.9**
 TIM RYAN RYAN CATTLE **COLOR BLACK WDA Ratio 100.5**
 N1515 SUNSET DR, LODI, WI, 53555 608-225-7993 **% OF BREED 100 H/P/S P PEN 2**

ANGUS

V A R FIRE POWER
 SCHEIFELBEIN TOP GUN 522
 FROSTY ELBA 4220
 PLATTEMERE WEIGH UP K360
 RC BARBARA 39
 ICC BARBARA K 905-6338

EPD'S/ac										
CED/%	BW/%	WW/%	YW/%	MB/%	\$M	\$W	\$F	\$G	\$B	\$C
7	0.9	84	146	0.8	73	79	115	71	187	316
45	45	15	15	40	35	25	20	25	20	20

Performance									
WDA	ADG	REA	BF	% IMF	Frame	BIRTH WT	START WT	FINAL WT	
3.46	4.15	15.6	0.19	4.47	6.3	81	975	1390	

Great disposition and extra length plus Epd \$Values \$W, \$F, \$B and \$C all in top 20%. RC 134 has good feet with manageable B.W. all makes for a very balanced trait bull. Sired by the popular Schiefelbein Top Gun and dam RC Barbara 39, tracing back to Barbara K905 makes for very predictable results.

28 **FALKLAND NEUMAN FIREPROOF** 21248229 2/24/2025 **ADG Ratio 100.8**
 KIRK LYNCH FALKLAND FARM **COLOR BLACK WDA Ratio 102.9**
 4034 CTY RD JJ, BLACK EARTH, WI, 53515 608-217-2158 **% OF BREED 100 H/P/S P PEN 3**

ANGUS

GB FIREBALL 672
 GAR FIREPROOF
 CHAIR ROCK SURE FIRE 6095
 G A R HOMETOWN
 FALKLAND NERA HOMETOWN
 NCA TOTAL 4326 BLK MGIC 3260

EPD'S/ac										
CED/%	BW/%	WW/%	YW/%	MB/%	\$M	\$W	\$F	\$G	\$B	\$C
14	0.2	71	139	1.4	47	78	118	95	213	323
4	30	45	25	10	90	25	15	10	10	15

Performance									
WDA	ADG	REA	BF	% IMF	Frame	BIRTH WT	START WT	FINAL WT	
3.54	4.23	15.2	0.43	6.11	5.5	69	902	1325	

Calving Ease leader of the pack! Perfect bull for use with your heifers! Highly docile with top of the line EPDs! Stand out Calving Ease, Marbling, \$B and \$C. Mother from Hometown ranks top 1% in calving Ease, BW and \$C for the breed and brings the entire package to this stand out bull. His Sire is the highly popular GAR Fireproof! Don't miss the opportunity to upscale your operation!

30 **KUHLE VISION N442** 21225796 2/7/2025 **ADG Ratio 126.2**
 DAVID KUHLE KUHLE ANGUS **COLOR BLACK WDA Ratio 111**
 1491 HWY 80, HAZEL GREEN, WI, 53811 563-542-0803 **% OF BREED 100 H/P/S P PEN 3**

ANGUS

BEAL BREAKTHROUGH
 ST VISIONARY
 HR RITA 9704
 KUHLE PAYCHECK E167H168
 KUHLE MISS PAYCHECKH168 L354
 RB LADY CAPITALIST 4238-0180

EPD'S/ac										
CED/%	BW/%	WW/%	YW/%	MB/%	\$M	\$W	\$F	\$G	\$B	\$C
8	1.8	89	171	1.0	64	85	148	83	231	364
35	65	10	2	25	55	15	1	15	3	4

Performance									
WDA	ADG	REA	BF	% IMF	Frame	BIRTH WT	START WT	FINAL WT	
3.82	5.3	15.3	0.26	5.13	6	76	963	1492	

Tattoo N442 – 732 lbs no-creep weaning weight, one of the fastest gain test bulls, top 30% calving ease and top 2% yearling weight, for cows and heifers

31**JFCC RESONATE 523**

5134899

12/17/2024

ADG Ratio**87.5**

KEVIN & TERRI JOHNSON

JOHNSON FAMILY CATTLE

COLOR

RED

WDA Ratio**86.2**

W8878 JELLEN RD, SPOONER, WI, 54801

715-498-9328

% OF BREED

100

H/P/S P**PEN 3****REDANGUS**

BIEBER CL ENERGIZE F121

5L 9 MILE RESONATE 1113

9 MILE DORY JIBA 6922-9126

BIEBER ROUSE SAMURAI X22

BIEBER SUSIE 254A

BIEBER SUSIE 217W

EPD'S/ac									
CED/%	BW/%	WW/%	YW/%	MILK/%	STAY/%	REA/%	HB/%	GM/%	PRO/%
18	-4.7	51	77	27	17	0.12	63	37	100
8	8	93	94	39	26	51	31	80	56

Performance									
WDA	ADG	REA	% BF	IMF	Frame	BIRTH WT	START WT	FINAL WT	
2.79	3.25	13.62	0.27	5.57	4.3	72	910	1235	

Calving ease deluxe! A powerful Resonate son out of our Bieber Susie donor, who has produced bulls selling to many states and performing well. A calving ease bull loaded with looks and style. Check him out on sale day.

32**BLACKBIRD NO DOUBT 537**

21366893

3/18/2025

ADG Ratio**88.8**

RICHARD & SUSAN KUNDE

KUNDE ANGUS

COLOR

BLACK

WDA Ratio**106.3**

612 80TH AVE, BALDWIN, IA, 52207

563-249-5072

% OF BREED

100

H/P/S P**PEN 3****ANGUS**

HOOVER NO DOUBT

MILL COULEE NO DOUBT 59

ERICA OF ELLSTON P445

S S ODYSSEY H71 0H28

ODYSSEY BLACKBIRD 237A

PROWLER BLACKBIRD 37

EPD'S/ac										
CED/%	BW/%	WW/%	YW/%	MB/%	\$M	\$W	\$F	\$G	\$B	\$C
4	3	78	141	0.6	58	62	111	59	170	278
70	85	25	20	55	70	60	25	40	35	40

Performance									
WDA	ADG	REA	BF	IMF	Frame	BIRTH WT	START WT	FINAL WT	
3.66	3.73	15	0.27	3.5	6	76	915	1287	

This grandson of Hoover No Doubt has the stout frame and thickness that should make him an asset to any herd. His granddam is the legendary L5 cow which has been one of the very best cows produced in the Hoover program. His dam is sired by SS Odyssey H71 0H28 that has really excelled in carcass traits while being at the top of the breed for docility scores. His genomic testing ranked him at the top 1% for angle score and top 2% for claw score if you want to have cows and bulls with few feet problems. 205 Adj. wt. 782 Ratio 109

33**DBLA A RESERVE N530**

4520174

2/2/2025

ADG Ratio**99.9**

ALLAN ARNDT

DOUBLE A SIMMENTALS

COLOR

BLK WF

WDA Ratio**103.1**

4509 S. BELDING RD, JANESVILLE, WI, 53546

608-774-0136

% OF BREED

100

H/P/S P**PEN 3****SIMMENTAL**

HHS MR ENTOURAGE 867B

LCDR RESERVE

LCDR MS ECHO 43E

WS ALL-AROUND Z35

DBLA F813T

DBLA MS C561

EPD'S/ac									
CED/%	BW/%	WW/%	YW/%	MILK/%	MCE/%	MWW/%	MB/%	REA%	API/%
9.6	0.7	95	144	21.6	6.7	69.2	0.17	1.12	145
53	36	9	11	63	32	27	50	10	35

Performance									
WDA	ADG	REA	BF	IMF	Frame	BIRTH WT	START WT	FINAL WT	
3.31	3.71	14.6	0.26	2.53	5.5	91	939	1310	

DBLA Homozygous Polled, Red carrier, BWF. Our first Reserve son tested. EPDs say he's a growth and carcass bull with breed average CE and BWT. Later maturing, Super quiet. Dam has roots here since 1985. Recommended for cows, No Creep

34 **YOLO LOADED FOR BEAR 53N** 4553585 2/20/2025 **ADG Ratio 107.8**
 WADE STICHERT YOLO CATTLE **COLOR BLACK WDA Ratio 99.7**
 N5413 DIVISION AVE, CHILI, WI, 54420 715-897-3602 **% OF BREED 50 H/P/S P PEN 3**

% SIMMENTAL

REMINGTON LOCK N LOAD54U
 DMCC/WOOD FULLY LOADED 39D
 AUBREYS BLACK BLAZE III
 YOLO DISCOVERY 24G
 YOLO MAIN MAIDEN 7K
 YOLO COWGIRL UP

EPD'S/ac									
CED/%	BW/%	WW/%	YW/%	MILK/%	MCE/%	MWW/%	MB/%	REA%	API/%
7.4	1	84.5	131.1	18.5	5.3	60.7	0.42	0.68	122.5
83	67	29	34	88	78	63	48	53	70

Performance									
WDA	ADG	REA	BF	% IMF	Frame	BIRTH WT	START WT	FINAL WT	
3.57	4.55	14.6	0.15	2.34	5.7	98	895	1350	

Fully Loaded has been our go to bull when wanting to add a little extra eye appeal. 53N stems from a cow family loaded with thick made, good uddered brood cows. His dam, granddam, and great granddam are all still in production with the latter being 12 years of age and still going strong. Homo black.

35 **KUHLE BANDO N441** 21222919 2/6/2025 **ADG Ratio 119.7**
 DAVID KUHLE KUHLE ANGUS **COLOR BLACK WDA Ratio 107**
 1491 HWY 80, HAZEL GREEN, WI, 53811 563-542-0803 **% OF BREED 100 H/P/S P PEN 3**

ANGUS

CONNEALY CLARITY
 QUAKER HILL BLACK BANDOLIER
 QUAKER HILL BLACKCAPMAY 9A27
 WILLIAMS F EAGLE 900-333
 KUHLE MISS EAGLE L386
 KUHLE MISS MAGIC G253 J337

EPD'S/ac										
CED/%	BW/%	WW/%	YW/%	MB/%	\$M	\$W	\$F	\$G	\$B	\$C
6	2.3	94	172	1.0	58	88	135	72	208	328
55	75	3	2	25	70	10	3	25	10	15

Performance									
WDA	ADG	REA	BF	% IMF	Frame	BIRTH WT	START WT	FINAL WT	
3.68	5.03	13.6	0.31	4.87	5.6	78	940	1442	

Tattoo N441 – 766 lbs no-creep weaning weight, top 3% growth, low birth weight, for cows and heifers

37 **RWA NOLAN** 4568221 1/1/2025 **ADG Ratio 93.1**
 MARCUS & LIZ REINHARDT **COLOR BLACK WDA Ratio 91.9**
 1802 WEST 1ST STREET, MERRILL, WI, 54452 715-573-7828 **% OF BREED 100 H/P/S P PEN 3**

SIMMENTAL

W/C EXECUTIVE ORDER 8543B
 FELT PERSERVERANCE 302F
 RUBYS RHYTHM Z231
 WHF/JS/CCS DOUBLE UP G365
 RWA LANDRY-ET
 BAR QH REVIVAL E039

EPD'S/ac									
CED/%	BW/%	WW/%	YW/%	MILK/%	MCE/%	MWW/%	MB/%	REA%	API/%
10.1	1.1	79.5	117.2	20.3	5.5	60	-.18	0.98	110
46	47	50	54	73	53	65	100	28	85

Performance									
WDA	ADG	REA	BF	% IMF	Frame	BIRTH WT	START WT	FINAL WT	
2.95	3.46	15.2	0.15	1.6	4.1	81	917	1262	

Great calving ease and growth in a black bull that won't disappoint.

38**J-M RANCH SCOTCHMAN 501**

21325639

2/12/2025

ADG Ratio 121.9

JEFF MORRISSETTE

J-M RANCH

COLOR BLACK**WDA Ratio 105.6**

W5721 HARVEY RD, POYNETTE, WI, 53955

608-235-9498

% OF BREED 100**H/P/S P PEN 3****ANGUS**

CONNEALY CLARITY
 CONNEALY SCOTCHMAN
 PASHA OF CONANGA 557P
 G A R ASHLAND
 GAFFNEY BLACKBIRD 120
 GAFFNEY BLACKCAP 9204

EPD'S/ac										
CED/%	BW/%	WW/%	YW/%	MB/%	\$M	\$W	\$F	\$G	\$B	\$C
17	-.6	90	156	0.9	89	89	123	71	194	341
1	15	10	10	30	10	10	10	25	15	10

Performance									
WDA	ADG	REA	BF	IMF	Frame	BIRTH WT	START WT	FINAL WT	
3.63	5.12	14.6	0.37	3.14	5.1	77	891	1402	

Elite heifer bull, 17 CED with a minus BW and a big spread on his EPD's. Has excellent feet and legs with a good genomic foot score. Excellent disposition with a high Genomic score. 501 has good carcass traits also. This bull tested very consistent during the test.

39**DBLA QUEST N538ET**

4520202

2/8/2025

ADG Ratio 101

ALLAN ARNDT

DOUBLE A SIMMENTALS

COLOR BLACK**WDA Ratio 102.3**

4509 S. BELDING RD, JANESVILLE, WI, 53546

608-774-0136

% OF BREED 100**H/P/S P PEN 3****SIMMENTAL**

WS PROCLAMATION E202
 KBHR BOLD RULER H152
 BAR CK MS X38 106Z
 HOOK'S FAST MONEY 67C
 DBLA MS F832
 DBLA S602

EPD'S/ac										
CED/%	BW/%	WW/%	YW/%	MILK/%	MCE/%	MWW/%	MB/%	REA%	API/%	
14.8	-1.4	69.2	109.4	36.1	8.9	70.7	0.33	0.44	148.9	
10	11	87	69	2	8	20	27	100	30	

Performance									
WDA	ADG	REA	BF	IMF	Frame	BIRTH WT	START WT	FINAL WT	
3.28	3.75	13.5	0.37	2.1	5.3	88	905	1280	

DBLA Homozygous Black, Homozygous Polled. ET calf, heifer worthy CE and BWT, Top 10% MCE and Milk, Top 20% MARB. Outstanding Structure. All 5 2025 ET sisters staying in the herd. Use him on heifers and cows. No creep

40**BAF REPUBLIC 103**

21330996

1/9/2025

ADG Ratio 119.9

DAN & LANA BONTE

BONTE ANGUS FARM

COLOR BLACK**WDA Ratio 93.4**

1671 HWY 128, GLENWOOD CITY, WI, 54013

715-977-2167

% OF BREED 100**H/P/S P PEN 3****ANGUS**

E&B PLUS ONE
 RAVEN REPUBLIC I564
 SITZ EMMA E 2738
 BIGK/WSC IRON HORSE 025F
 BAF MISS RODEO 911
 BAF MISS COWGIRL 604

EPD'S/ac										
CED/%	BW/%	WW/%	YW/%	MB/%	\$M	\$W	\$F	\$G	\$B	\$C
10	-2.1	82	146	0.1	68	93	116	37	153	266
20	4	20	15	95	50	5	15	85	50	50

Performance									
WDA	ADG	REA	BF	IMF	Frame	BIRTH WT	START WT	FINAL WT	
3.21	5.03	15.4	0.29	3.32	3.7	66	847	1350	

Good birth to WW spread. Lower birth weight that does not give up carcass values. Dam is moderate frame cow with superb udder and feet. Excellent choice for heifers or any cow/calf program.

42 **SRN WILDCAT 2510** 5125539 1/22/2025 **ADG Ratio** 97.1
 JOE & SUE DUNPHY SHAMROCK NOOK RED ANGUS **COLOR** BLACK **WDA Ratio** 96.3
 W646 STATE RD 59, ALBANY, WI, 53502 608-558-5342 **% OF BREED** 100 **H/P/S P** **PEN** 3

REDANGUS
 GAR DISCOVERY 6737H
 E&B WILDCAT 9402
 E&B LADY PLUS 643
 SRN SPARTACUS 1915
 SRN ERICA 2215
 SRN ERICA 1324

EPD'S/ac									
CED/%	BW/%	WW/%	YW/%	MILK/%	STAY/%	REA/%	HB/%	GM%	PRO/%
17	-3.2	78	129	25	16	0.51	66	99	165
14	26	15	11	59	41	4	25	1	2

Performance									
WDA	ADG	REA	BF	IMF	Frame	BIRTH WT	START WT	FINAL WT	
3.11	3.61	13.6	0.35	3	4.7	78	907	1267	

SRN Wildcat 2510, a black/red gene carrier, combines the proven power of E & B Wildcat 9402 with a maternal line built for longevity. Wildcat 9402 is known for elite calving ease, strong growth, foot quality, and sound structure. 2510 reflects that balance with 10 EPDs ranking in the top 25% of the breed. On the bottom side, his great-granddam, SRN Erica 9013, just had her 16th calf, has a CED of 19, and a 364-day calving interval. If you're building a cow herd to last, Lot 42 offers genetics designed to keep females in production.

43 **ERICA ODYSSEY 523** 21366891 3/12/2025 **ADG Ratio** 92.6
 RICHARD & SUSAN KUNDE KUNDE ANGUS **COLOR** BLACK **WDA Ratio** 102.9
 612 80TH AVE, BALDWIN, IA, 52207 563-249-5072 **% OF BREED** 100 **H/P/S P** **PEN** 3

ANGUS
 S S ODYSSEY H71
 SS ODYSSEY H71 OH28
 S S MISS DATA MANAGER M519
 WERNER PROWLER 4041
 PROWLER ERICA 108
 FAST TRACK ERICA 603

EPD'S/ac										
CED/%	BW/%	WW/%	YW/%	MB/%	\$M	\$W	\$F	\$G	\$B	\$C
8	0.9	64	113	1.0	63	68	85	79	165	277
35	45	65	65	25	60	45	70	15	40	45

Performance									
WDA	ADG	REA	BF	IMF	Frame	BIRTH WT	START WT	FINAL WT	
3.54	3.89	15.8	0.39	4.42	5.8	80	879	1267	

This is a calving ease son of SS Odyssey H71 OH28 that scores high on docility and is near the top of the breed for milk EPD. His genomic scores for REA and Marbling rank in the top 20% of the breed. His dam is moderate framed and weans off one the heaviest calves in the calf crop every year. 205 Adj. wt 751 Ratio 104

44 **KB ROCKY** M1012848 3/7/2025 **ADG Ratio** 83.2
 JUSTIN & JASON KEMPEL KB FARMS **COLOR** WHITE **WDA Ratio** 93.8
 8336 W CEDARVILLE RD, LENA, IL, 61048 815-541-7366 **% OF BREED** 100 **H/P/S P** **PEN** 4

CHAROLAIS
 LT BADGE 9184
 WF JUDGE 319P
 WF MISS PATRIOT 968
 JAB RUSHMORE 716
 MADISON
 JANE

EPD'S/ac									
CED/%	BW/%	WW/%	YW/%	MILK/%	MCE/%	CW/%	MB/%	REA/%	TSI/%
18	-6.2	48	100	33	10	28	0.14	0.81	280
5	2	95	85	9	45	45	50	35	30

Performance									
WDA	ADG	REA	BF	IMF	Frame	BIRTH WT	START WT	FINAL WT	
3.37	3.47	14.5	0.26	1.96	5.2	78	878	1225	

Rocky has the desired traits of a smooth, longer bodied bull with an attractive appearance that will improve any herd. His traits include calving ease, lower birth weights and better milking ability.

45**PADO KINGS CORNER N517**

5196775

3/3/2025

ADG Ratio**111.9**

PAUL & DONNA HABECK

PADO FARMS

COLOR

RED

WDA Ratio**112.3**

W6011 CTY RD W, CASCADE, WI, 53011

920-946-7095

% OF BREED

100

H/P/S P**PEN 4****REDANGUS**

BADLANDS CINCHED 521C
 TJS FOUR CORNERS J018
 TJS CHICO F051
 BIEBER DEEP END B597
 PADO PRIYA F822
 PADO FOXY

EPD'S/ac									
CED/%	BW/%	WW/%	YW/%	MILK/%	STAY/%	REA/%	HB/%	GM%	PRO/%
10	-2	74	117	26	18	0.20	69	57	126
76	80	24	28	42	18	33	21	36	21

Performance									
WDA	ADG	REA	BF	IMF	Frame	BIRTH WT	START WT	FINAL WT	
3.63	4.16	13.74	0.26	3.49	5.5	87	917	1332	

Kings Corner is a powerful, deep-bodied Red Angus bull with width, mass, and strong structural correctness.

He's balanced and square-hipped. His shape and fleshing ability make him ideal for producing productive females while adding performance and carcass value to steer calves. His 8 year old Dam is one of our herd favorites due to her docile nature and has a very nice udder. All of her bull calves were sold for breeding stock.

46**KNN NITECAP 6N**

4575519

2/28/2025

ADG Ratio**108.9**

KURT & NETTIE NELSON

KNN FARMS

COLOR

BLACK

WDA Ratio**102.4**

W5137 290TH AVE, BAY CITY, WI, 54723

651-246-8774

% OF BREED

50

H/P/S P**PEN 4****% SIMMENTAL**

HOOK'S FULL FIGURES 11F
 FIVE STAR JACKSON J10
 KBHR F316
 MJB DILLON 689D
 KNN FALLON 35H
 KNN FEBE 1E

EPD'S/ac									
CED/%	BW/%	WW/%	YW/%	MILK/%	MCE/%	MWW/%	MB/%	REA%	API/%
8.6	1.8	81.9	130	27.6	6.9	68.5	0.18	1.13	119.2
78	84	38	34	21	53	27	83	3	75

Performance									
WDA	ADG	REA	BF	IMF	Frame	BIRTH WT	START WT	FINAL WT	
3.67	4.6	16.6	0.21	1.81	6	90	898	1357	

If you're looking for a powerhouse with performance, here he is! His sire, combines genomic and phenotypic excellence. His dam is one of our favorite South Devon females, and is a powerful, heavy milking, and great uddered. She is easing calving and has given us great bulls who have performed on test. This elite genetic package has impressive numbers and will provide maximum heterosis by using a 3-way cross. Feel free to give us a call for more information about our South Devon/Simmental seedstock operation.

47**D3C JOURNEY SPRITE N201H**

4569340

2/22/2025

ADG Ratio**95.1**

BRIAN & MACKENZIE PIONEK

DIAMOND COULEE CATTLE

COLOR

BLACK

WDA Ratio**100.3**

87535 MARSHALL AVE, STRUM, WI, 54770

920-217-1610

% OF BREED

100

H/P/S P**PEN 4****SIMMENTAL**

RUBY'S CURRENCY 7134E
 FRKG JOURNEY 71J
 VCL MISS 914G
 W/C RELENTLESS 32C
 D3C RELENTLESS SPIRIT H201
 SAS ANGEL Z101

EPD'S/ac									
CED/%	BW/%	WW/%	YW/%	MILK/%	MCE/%	MWW/%	MB/%	REA%	API/%
11.5	0.5	68.9	87.8	21.3	4.4	55.7	0.13	0.73	124.8
33	35	88	98	65	72	83	58	79	65

Performance									
WDA	ADG	REA	BF	IMF	Frame	BIRTH WT	START WT	FINAL WT	
3.22	3.53	13.9	0.35	2.31	5.1	86	857	1210	

Out of one of our favorite cows, a Relentless that goes back to Springers Angel Z101 cow. A stout calf with a big top that balances growth with maternal traits.

48**FLC PATHFINDER 502**

21432037

1/15/2025

ADG Ratio 103.9

JORY & KRISTIN FREMSTAD FREMSTAD LAND & CATTLE

COLOR BLACK**WDA Ratio 92.3**

217 MELBY ST, WESTBY, WI, 54667

608-606-2314

% OF BREED 100**H/P/S P PEN 4****ANGUS**

LT ENTERPRISE 5213
 KOUPALS B&B PATHFINDER 8106
 B & B BLKBD PROGRESS 3015
 MOGCK ENTICE
 FREMSTAD ELLUNAS ELITE 301
 SPRING CREEKS ELLUNAS ELITE

EPD'S/ac										
CED/%	BW/%	WW/%	YW/%	MB/%	\$M	\$W	\$F	\$G	\$B	\$C
7	-.7	63	119	0.6	66	74	99	49	149	259
45	15	70	55	60	50	35	45	60	55	60

Performance										
WDA	ADG	REA	BF	IMF	Frame	BIRTH WT	START WT	FINAL WT		
3.18	4.36	14.5	0.29	4.76	5.2	78	879	1315		

This bull is a stout made Koupals B & B Pathfinder son stood out from day one. His beautiful young dam sired by Mogck Entice showed incredible productivity through him. He achieved a WW ratio of 104 and continues developing with impressive strength and structural soundness.

50**KB RIP**

M1013048

3/13/2025

ADG Ratio 100.5

JUSTIN & JASON KEMPEL KB FARMS

COLOR WHITE**WDA Ratio 98.9**

8336 W CEDARVILLE RD, LENA, IL, 61048

815-541-7366

% OF BREED 100**H/P/S P PEN 4****CHAROLAIS**

LT BADGE 9184
 WF JUDGE 319P
 WF MISS PATRIOT 968
 JAB WGB RALLY 576
 KORI
 BELLA

EPD'S/ac										
CED/%	BW/%	WW/%	YW/%	MILK/%	MCE/%	CW/%	MB/%	REA/%	TSI/%	
7.3	-.3	64	116	29	3.2	35	-.06	1.04	280	
85	70	50	50	25	95	20	100	6	30	

Performance										
WDA	ADG	REA	BF	IMF	Frame	BIRTH WT	START WT	FINAL WT		
3.56	4.19	15	0.15	1.6	6.1	110	851	1270		

Rip has the desired traits of a stylish, smooth, longer bodied bull with an attractive look that scores higher in both carcass weight and ribeye EPD's.

51**MAR MIC ACTIVE DUTY 010-559**

21296958

3/8/2025

ADG Ratio 83.0

MATT MCNETT MAR MIC FARM

COLOR BLACK**WDA Ratio 96.2**

10958 MINE ROAD, CUBA CITY, WI, 53807

608-770-3695

% OF BREED 100**H/P/S P PEN 4****ANGUS**

LCC NEW STANDARD
 R B ACTIVE DUTY
 B A LADY 6807-305
 R B TRAVELER 3244
 MAR MIC PRIDE D238-704
 HILLS PRIDE D238-904

EPD'S/ac										
CED/%	BW/%	WW/%	YW/%	MB/%	\$M	\$W	\$F	\$G	\$B	\$C
8	0.7	59	98	-0.01	62	61	73	28	102	194
35	40	80	85	95	60	60	90	95	95	95

Performance										
WDA	ADG	REA	BF	IMF	Frame	BIRTH WT	START WT	FINAL WT		
3.31	3.49	14.3	0.3	3.11	5.1	85	849	1197		

Active Duty is a high-performance bull that puts it together from birth to weaning. Backed by a proven, performance-driven pedigree and the Lady cow family, he offers the kind of power, shape, and capacity that work in real cattle operations. His kind continues to be in demand across the country.

52 **ERICA HOMETOWN 545** 21366895 3/7/2025 **ADG Ratio 95.1**
 RICHARD & SUSAN KUNDE KUNDE ANGUS **COLOR** BLACK **WDA Ratio 102.5**
 612 80TH AVE, BALDWIN, IA, 52207 563-249-5072 **% OF BREED 100** **H/P/S P PEN 4**

ANGUS

G A R HOME TOWN
 GAFFNEY HOMETOWN 259
 GAFFNEY PRIDEVA 0126
 S S ODYSSEY H71 0H28
 ODYSSEY ERICA 345
 FAST TRACK ERICA 845

EPD'S/ac										
CED/%	BW/%	WW/%	YW/%	MB/%	\$M	\$W	\$F	\$G	\$B	\$C
11	0.3	65	115	1.4	87	72	88	87	175	314
15	30	60	60	10	15	35	65	10	30	20

Performance									
WDA	ADG	REA	BF	% IMF	Frame	BIRTH WT	START WT	FINAL WT	
3.53	3.99	14.9	0.37	6.22	5.4	72	881	1280	

Calving ease son of Gaffney Hometown 259 that scores near the top of the breed in docility, marbling, and \$M. He has a very appealing look to go with some impressive numbers behind him. He is out of a first calf heifer daughter of SS Odyssey H71 0H28 that puts a lot of good things together. 205 Adj. wt 760 Ratio 106

53 **TCA DRAFT PICK 561** 21276829 3/22/2025 **ADG Ratio 105.3**
 MARK & RUTH KUHN TWIN CREEK ANGUS **COLOR** BLACK **WDA Ratio 114**
 1799 293RD AVENUE, FORT ATKINSON, IA, 52144 563-419-6441 **% OF BREED 100** **H/P/S P PEN 4**

ANGUS

CONNELLY CLARITY
 PEAK DRAFT PICK
 VINTAGE RITA 0404
 BEAL BREAKTHROUGH
 TCA BREAK BLACKLASS 303
 T C A FIREBALL BLACKLASS 101

EPD'S/ac										
CED/%	BW/%	WW/%	YW/%	MB/%	\$M	\$W	\$F	\$G	\$B	\$C
11	-7	89	154	1.8	123	105	140	110	250	447
15	15	10	10	2	1	1	2	2	1	1

Performance									
WDA	ADG	REA	BF	% IMF	Frame	BIRTH WT	START WT	FINAL WT	
3.92	4.42	15.7	0.38	7.51	5.5	71	923	1365	

No other bull in the angus breed can match his CED, BW, YW, \$M and \$C. Our highest weaning weight ever 967 lbs. adjusted with No creep feed. Super nice first calf dam that bred back early.

55 **FLC ATLANTIS 505** 21432040 1/22/2025 **ADG Ratio 89.8**
 JORY & KRISTIN FREMSTAD FREMSTAD LAND & CATTLE **COLOR** BLACK **WDA Ratio 90.3**
 217 MELBY ST, WESTBY, WI, 54667 608-606-2314 **% OF BREED 100** **H/P/S P PEN 4**

ANGUS

S A V RAINFALL 6846
 SQUARE B ATLANTIS 8060
 ELBANNA OF CONANGA
 GAR SUNRISE
 EMERALDLN KMOFWOODLAWN F500
 JVC KEM OF WOODLAWN V9138

EPD'S/ac										
CED/%	BW/%	WW/%	YW/%	MB/%	\$M	\$W	\$F	\$G	\$B	\$C
1	3.3	72	114	0.6	78	70	66	60	127	243
90	90	40	65	60	25	40	95	40	80	70

Performance									
WDA	ADG	REA	BF	% IMF	Frame	BIRTH WT	START WT	FINAL WT	
3.12	3.77	11.4	0.2	3.58	5.5	82	888	1265	

This bull has expressed added length and frame in his development. He stood out in his contemporary group with a weaning weight ratio of 115. His standout dam has weaned 4 calves with an average WW ratio of 108.

57 **WGA TAHOE 5N** 21341771 3/18/2025 **ADG Ratio 109**
 JIM & HOLLY MARSH WALNUT GROVE ANGUS **COLOR BLACK WDA Ratio 110.5**
 1910 CHICAGO RD, EARLVILLE, IL, 60518 847-652-0931 **% OF BREED 100 H/P/S P PEN 4**

ANGUS

TEHAMA UPWARD Y238
 TEHAMA TAHOE B767
 TEHAMA MARY BLACKBIRD Y684
 DEER VALLEY GROWTH FUND
 WGA SWEET LADY 7L
 W G A SWEET LADY 8H

EPD'S/ac										
CED/%	BW/%	WW/%	YW/%	MB/%	\$M	\$W	\$F	\$G	\$B	\$C
11	1.9	91	154	0.3	80	93	100	39	139	260
15	65	5	10	85	25	5	40	80	70	60

Performance									
WDA	ADG	REA	BF	% IMF	Frame	BIRTH WT	START WT	FINAL WT	
3.8	4.58	15.6	0.28	4.49	5.8	72	880	1337	

A carefree bull that does it all with little effort. Top in CED, weaning and yearling EPD's. Weaned at 808 lbs. with a low birth weight, his sire and maternal grandsire are highly proven, Select Sires Bulls. His dam is proving herself as our next bigtime cow for calving ease and high growth herself and in her offspring.

58 **CMA 222 BUCKSHOT 2512 ET** 44694991 4/4/2025 **ADG Ratio 109.4**
 CALEB & ALISSA AHRENS CMA HEREFORDS **COLOR R/W WDA Ratio 113**
 W5177 TSCHUDY RD, MONROE, WI, 608-346-9261 **% OF BREED 100 H/P/S P PEN 4**

HEREFORD

JDH AH BENTON 8G
 STELLPFLUG GUNSMOKE 222 ET
 NJW 202C 4013 HOMEMAKER 90H
 LCC FBF TIME TRAVELER 480
 CMA 480 GYPSY 1804
 CMA 966R CLAIRISSA 1005

EPD'S/ac									
CED/%	BW/%	WW/%	YW/%	MILK/%	MCE/%	MB/%	REA/%	BMI/%	CHBI/%
6.8	0.7	56	91	22	1.4	0.19	0.56	346	146
23	15	58	54	83	54	37	38	68	20

Performance									
WDA	ADG	REA	BF	% IMF	Frame	BIRTH WT	START WT	FINAL WT	
3.39	3.34	14.41	0.3	3.19	5.2	81	801	1135	

Buckshot comes from our most proven and consistent donor cow and is sired by the many-time national champion, Gunsmoke. Gunsmoke has taken the breed by storm for his carcass merit and do-ability. Hisdam is easy doing, problem free that never misses. Expect him to be a calving ease option that will sire productive, highly desirable baldy females that will be sound structured with plenty of functionality and steers that will push down the scales when it pays. Baldy cattle will never go out of style. Heterosis pays. HOMOZYGOUS POLLED

59 **RWA NAKAO** 4568205 1/25/2025 **ADG Ratio 119.8**
 MARCUS & LIZ REINHARDT **COLOR RED WF WDA Ratio 100.5**
 1802 WEST 1ST STREET, MERRILL, WI, 54452 715-573-7828 **% OF BREED 100 H/P/S P PEN 4**

SIMMENTAL

W/C BANKROLL 811D
 SJF SMJ PAYROLL
 SJF/TVSC CHARLIE
 W/C FORT KNOX 609F
 RWA KERRI-ET
 HILB MISS VERSACE E57C

EPD'S/ac									
CED/%	BW/%	WW/%	YW/%	MILK/%	MCE/%	MWW/%	MB/%	REA%	API/%
14.1	-1	69.7	101.9	21.8	6.9	56.6	.08	0.81	120.6
11	15	84	84	62	30	78	68	65	70

Performance									
WDA	ADG	REA	BF	% IMF	Frame	BIRTH WT	START WT	FINAL WT	
3.22	4.45	15.7	0.2	1.71	4.4	68	858	1302	

Excellent calving ease and growth in a beautiful red package you will like.

61**ADAMS ROYAL FLUSH 2508**

21309902

3/12/2025

ADG Ratio 97.5

ARNOLD & ALICIA ADAMS AHA ACRES

COLOR BLACK**WDA Ratio 103.9**

2062 FOUNTAIN BLUFF LANE, PLATTEVILLE, WI,

608-642-6982

% OF BREED 100**H/P/S P PEN 5****ANGUS**

S A V RENOVATION 6822
 S A V ROYAL FLUSH 2735
 S A V EMBLYNETTE 2369
 MILL BRAE BENCHMARK 9016
 ADAMS MADAME PRIDE 2203
 S A V MADAME PRIDE 0615

EPD'S/ac										
CED/%	BW/%	WW/%	YW/%	MB/%	\$M	\$W	\$F	\$G	\$B	\$C
-9	5.5	84	159	0.6	26	61	115	57	173	250
95	95	15	5	55	95	60	20	45	30	65
Performance										
WDA	ADG	REA	BF	IMF	Frame	BIRTH WT	START WT	FINAL WT		
3.58	4.09	14.9	0.22	3.79	4.8	85	871	1280		

Described in one word, GROWTH! This prospect is in the Top 5% for YW and Top 15% for WW. He is stout made, thick topped and big hipped with a super disposition. His dam is in the top 15% for WW, REA and \$F, and in the top 5% for YW.

His pedigree reads like a who's who on performance and he will follow suit.

Made for folks who want to take advantage of getting an edge on lbs at weaning from their mature cows.

62**FLC BLUEPRINT 509**

21432052

2/4/2025

ADG Ratio 110.1

JORY & KRISTIN FREMSTAD FREMSTAD LAND & CATTLE

COLOR BLACK**WDA Ratio 97.4**

217 MELBY ST, WESTBY, WI, 54667

608-606-2314

% OF BREED 100**H/P/S P PEN 5****ANGUS**

WOODHILL BLUEPRINT
 FREMSTAD'S BLUEPRINT 302
 EMERALD LN POLLY H798
 G A R HOMETOWN
 FREMSTAD'S BARBARA 213
 MILL COULEE BARBARA 539

EPD'S/ac										
CED/%	BW/%	WW/%	YW/%	MB/%	\$M	\$W	\$F	\$G	\$B	\$C
10	1.2	74	124	0.8	61	82	97	61	158	266
20	50	35	45	45	65	20	45	40	45	50
Performance										
WDA	ADG	REA	BF	IMF	Frame	BIRTH WT	START WT	FINAL WT		
3.35	4.62	15.1	0.36	3.94	5.1	78	858	1320		

This bull is a phenotypic standout. He is sired by an impressive homebred son of Woodhill Blueprint. His moderate framed young dam sired by GAR Hometown is exactly the type of cow we are striving to produce with flawless phenotype and lots of eye appeal. He had a WW ratio of 98.

63**RRF CORNERSTONE N02**

21276577

2/21/2025

ADG Ratio 85.7

MATT SOLVERSON ROCKY ROAD FARMS

COLOR BLACK**WDA Ratio 96.2**

11124 STATE RD 23, DARLINGTON, WI, 53530

608-482-1765

% OF BREED 100**H/P/S P PEN 5****ANGUS**

EZAR STEP UP 917B
 BASIN KEYSTONE
 BASIN JOY 9140
 BALDRIDGE HIGHLANDER
 RRF BLACKCAP BREAKER L004
 RRF BLACKCAP BREAKER J006

EPD'S/ac										
CED/%	BW/%	WW/%	YW/%	MB/%	\$M	\$W	\$F	\$G	\$B	\$C
3	1.6	78	140	1.3	85	90	97	89	187	328
75	60	25	20	10	15	10	45	40	20	15
Performance										
WDA	ADG	REA	BF	IMF	Frame	BIRTH WT	START WT	FINAL WT		
3.31	3.6	13.5	0.29	3.94	4.9	67	888	1247		

Great marbling bull with good growth and has a great phenotype. His docility is unmatched with a great outcross pedigree.

64 **J-M RANCH IRON HORSE 503** 21325642 2/15/2025 **ADG Ratio 123.9**
 JEFF MORRISSETTE J-M RANCH **COLOR** BLACK **WDA Ratio 101.7**
 W5721 HARVEY RD, POYNETTE, WI, 53955 608-235-9498 **% OF BREED 100** **H/P/S P PEN 5**

ANGUS

EXAR STALLION 7986
 BIGK/WSC IRON HORSE 025F
 EXAR HENRIETTA PRIDE 5702
 SITZ RESILIENT 10208
 MILL COULEE BARBARA 331
 MILL COULEE BARBARA 826

EPD'S/ac										
CED/%	BW/%	WW/%	YW/%	MB/%	\$M	\$W	\$F	\$G	\$B	\$C
8	1.3	83	141	0.5	78	88	99	52	151	274
35	50	15	20	75	25	10	45	55	55	45

Performance									
WDA	ADG	REA	BF	% IMF	Frame	BIRTH WT	START WT	FINAL WT	
3.5	5.2	13.9	0.26	3.14	5	71	820	1340	

Calving ease bull with a nice spread in his EPD'S. The dam of this bull is from Mill Coulee out of the famous Barbara family. A favorite for his blend of performance and calving ease, not only that he doesn't sacrifice style and muscularity.

65 **RWA NOAH** 4568209 1/1/2025 **ADG Ratio 103.1**
 KENT & WENDY REINHARDT REINY WAY ACRES **COLOR** BLACK **WDA Ratio 91.6**
 W6924 GRASS RD, MERRILL, WI, 54452 715-573-7891 **% OF BREED 100** **H/P/S P PEN 5**

SIMMENTAL

WLE COPACETIC E02
 ROCKING P PRIVATE STOCK H010
 RP/MP BUILT TO LOVE A021
 SFG COWBOY LOGIC D627
 RWA JAZZY-ET
 STF ONYX 451W

EPD'S/ac									
CED/%	BW/%	WW/%	YW/%	MILK/%	MCE/%	MWW/%	MB/%	REA%	API/%
14	0.6	78.5	116	15.6	5.7	54.8	0.34	0.6	140.9
13	37	52	55	98	50	87	26	93	40

Performance									
WDA	ADG	REA	BF	% IMF	Frame	BIRTH WT	START WT	FINAL WT	
2.94	3.83	12.3	0.17	3.23	5	78	875	1257	

Great calving ease, growth and EPD's. Has a who's who pedigree in the Simmental world.

66 **JRQC NITRO** 5187925 3/5/2025 **ADG Ratio 112.6**
 JOHN ROECKER JR CATTLE COMPANY **COLOR** RED **WDA Ratio 107.2**
 PO BOX 12, BROWNSVILLE, WI, 53006 920-238-1513 **% OF BREED 100** **H/P/S P PEN 5**

REDANGUS

RED BRYLOR BIG ROCK 85T
 SANDBOX MR BIG ROCKER
 RED RIVERDALE PRINCESS 120T
 RRA AVIATOR 502
 LARSONS KANA F016
 DAMAR KANACKER X101

EPD'S/ac									
CED/%	BW/%	WW/%	YW/%	MILK/%	STAY/%	REA/%	HB/%	GM%	PRO/%
4	3	74	119	22	15	0.46	39	79	118
98	99	22	23	83	55	5	76	8	30

Performance									
WDA	ADG	REA	BF	% IMF	Frame	BIRTH WT	START WT	FINAL WT	
3.47	4.18	13.6	0.19	3.23	5.6	85	847	1265	

JRQC Nitro brings muscle, capacity, and herd-sire presence in a strong Red Angus package. A practical bull designed to add growth, consistency, and value to any program.

67 **BAF IDENTIFIED 107** 21331000 1/13/2025 **ADG Ratio 125**
 DAN & LANA BONTE BONTE ANGUS FARM **COLOR BLACK WDA Ratio 91.4**
 1671 HWY 128, GLENWOOD CITY, WI, 54013 715-977-2167 **% OF BREED 100 H/P/S P PEN 5**

ANGUS
 MILL BRAE IDENTIFIED 4031
 SS IDENTIFIED 7551
 G A R PROPHET 1463
 G A R DUAL THREAT
 BAF MISS HITCH 805
 BAF MISS HICKEM 605

EPD'S/ac										
CED/%	BW/%	WW/%	YW/%	MB/%	\$M	\$W	\$F	\$G	\$B	\$C
0	4.8	81	148	0.7	72	64	139	66	205	338
90	95	20	15	45	40	55	2	30	10	10

Performance									
WDA	ADG	REA	BF	% IMF	Frame	BIRTH WT	START WT	FINAL WT	
3.14	5.25	13.4	0.23	3.9	6	95	783	1307	

Superb maternal values with above average fertility expectations. Bull with above average carcass traits with the frame to carry. Excellent choice for use on dairy or in terminal programs.

69 **TCA BLACK BANDOLIER 560** 21278195 3/21/2025 **ADG Ratio 95**
 MARK & RUTH KUHN TWIN CREEK ANGUS **COLOR BLACK WDA Ratio 102**
 1799 293RD AVENUE, FORT ATKINSON, IA, 52144 563-419-6441 **% OF BREED 100 H/P/S P PEN 5**

ANGUS
 CONNEALY CLARITY
 QUAKER HILL BLACK BANDOLIER
 QUAKER HILL BLACKCAPMAY 9A27
 E W A ASCEND 7306
 TCA BALCKCAP ASCEND 203
 T C A ACCRUEL BLACKCAP 802

EPD'S/ac										
CED/%	BW/%	WW/%	YW/%	MB/%	\$M	\$W	\$F	\$G	\$B	\$C
15	-1.2	91	162	1.7	91	112	132	114	246	410
3	10	5	4	2	10	1	4	2	2	1

Performance									
WDA	ADG	REA	BF	% IMF	Frame	BIRTH WT	START WT	FINAL WT	
3.52	3.99	15.4	0.25	4.28	4.7	56	829	1227	

Incredible calving ease ,growth, carcass, and maternal package. Genomic standout with 10 traits singe digit. 840 adjusted WW. Sires- top \$C son.

70 **FLC EASY DECISION 516** 21432046 2/26/2025 **ADG Ratio 100.4**
 JORY & KRISTIN FREMSTAD FREMSTAD LAND & CATTLE **COLOR BLACK WDA Ratio 95.9**
 217 MELBY ST, WESTBY, WI, 54667 608-606-2314 **% OF BREED 100 H/P/S P PEN 5**

ANGUS
 COLEMAN ROCK 7200
 COLEMAN EASY DECISION 1539
 COLEMAN DONNA 7386
 WOODHILL DOMAIN 7493-J357
 FREMSTAD BAR-MERE NELL 312
 EMERALD LN BAR-MERENELL D233

EPD'S/ac										
CED/%	BW/%	WW/%	YW/%	MB/%	\$M	\$W	\$F	\$G	\$B	\$C
3	1.4	69	119	0.6	95	79	84	47	132	266
75	55	50	55	60	5	25	75	65	75	50

Performance									
WDA	ADG	REA	BF	% IMF	Frame	BIRTH WT	START WT	FINAL WT	
3.3	4.22	13.3	0.27	5.63	5	83	806	1227	

This is a stout made son of Coleman Easy Decision. He has exhibited impressive growth before and after weaning. He achieved a weaning weight ratio of 109. His young dam stems from a highly productive cow family in our herd. His granddam has weaned 7 calves with an average ratio of 107.

71**LDL DUKE N1045**

4553918

2/24/2025

ADG Ratio 103.1

TIM LUNDELL

LUNDELL FAMILY CATTLE

COLOR BLACK**WDA Ratio 99.4**

1190 GOLDMAN LANE, LIVINGSTON, WI, 53554

608-341-8296

% OF BREED 100**H/P/S P PEN 5****SIMMENTAL**

LCDR FAVOR 149F

LCDR DILIGENCE 215J

LCDR MS GIA 5G

LDL ROLL CALL H616

LDLK705

LDL MISSY E325

EPD'S/ac										
CED/%	BW/%	WW/%	YW/%	MILK/%	MCE/%	MWW/%	MB/%	REA%	API/%	
8.2	2.2	97.4	149.5	25.5	4.2	74.1	0.36	0.93	149.1	
68	67	8	7	37	76	12	24	40	30	

Performance										
WDA	ADG	REA	BF	% IMF	Frame	BIRTH WT	START WT	FINAL WT		
3.19	3.83	13.9	0.21	2.53	5	84	810	1192		

This LCDR Diligence son stands out for his excellent EPDs. Demonstrating structural integrity and durability, this bull is well-suited for longevity across multiple breeding seasons. Homozygous Polled

72**ADAMS BELOW ZERO 2501**

21310369

3/5/2025

ADG Ratio 72.6

ARNOLD & ALICIA ADAMS

AHA ACRES

COLOR BLACK**WDA Ratio 89**

2062 FOUNTAIN BLUFF LANE, PLATTEVILLE, WI,

608-642-6982

% OF BREED 100**H/P/S P PEN 5****ANGUS**

SITZ STELLAR 726D

COLEMAN BELOW ZERO 2106

COLEMAN DONNA 0153

O C C JUNEAU 807J

COLEMAN DONNA 7201

COLEMAN DONNA 714

EPD'S/ac											
CED/%	BW/%	WW/%	YW/%	MB/%	\$M	\$W	\$F	\$G	\$B	\$C	
12	-1.9	59	95	0.4	94	75	63	43	106	231	
10	4	80	90	75	10	30	95	75	95	80	

Performance										
WDA	ADG	REA	BF	% IMF	Frame	BIRTH WT	START WT	FINAL WT		
3.06	3.05	12.1	0.21	2.46	4.7	80	813	1118		

A sleep all night, calving ease prospect that has MATERNAL written all over him. If it's time to rebuild your cowherd with heifers, then there's no better way than with this son of Pathfinder Coleman Donna 7201.

He boasts traits for heifer pregnancy, milk production, functional longevity and \$Maternal weaned calf in the top 25% or greater of the breed.

73**FALKLAND NASH FIREPROOF**

21248218

4/9/2025

ADG Ratio 91.9

KIRK LYNCH

FALKLAND FARM

COLOR BLACK**WDA Ratio 104.6**

4034 CTY RD JJ, BLACK EARTH, WI, 53515

608-217-2158

% OF BREED 100**H/P/S P PEN 5****ANGUS**

GB FIREBALL 672

GAR FIREPROOF

CHAIR ROCK SURE FIRE 6095

G A R HOMETOWN

FALKLAND NATALIA ACCLAIM

NCA BUSHWKR ACCLAIM 1037

EPD'S/ac											
CED/%	BW/%	WW/%	YW/%	MB/%	\$M	\$W	\$F	\$G	\$B	\$C	
-1	3.8	82	147	1.3	40	67	104	98	203	303	
95	95	20	15	10	95	50	35	5	10	25	

Performance										
WDA	ADG	REA	BF	% IMF	Frame	BIRTH WT	START WT	FINAL WT		
3.6	3.86	12.4	0.12	4.13	6.2	72	802	1187		

Falkland Nash Fireproof is your next herd bull! Son of the amazing Calving Ease high value GAR Fireproof. Docility makes him easy to work with. Mother has a history of great high \$C and high marbling calves one of our favorite dams! High growth and Carcass merits make this bull an awesome addition to your herd.

74 **JFCC DELMONICO 560** 21219866 3/6/2025 **ADG Ratio 85.3**
 BRAD & LINDSAY JOHNSON JOHNSON FAMILY CATTLE **COLOR BLACK WDA Ratio 93**
 N6864 BOX ELDER RD, SHAWANO, WI, 54166 715-498-9328 **% OF BREED 100 H/P/S P PEN 5**

ANGUS

DB ICONIC G95
 JFCC DELMONICO
 JOHNSON FOREVER LADY 052
 SCHIEFELBEIN SHOWMAN 338
 JFCC FROSTY ELBA345
 FROSTY ELBA 148

EPD'S/ac										
CED/%	BW/%	WW/%	YW/%	MB/%	\$M	\$W	\$F	\$G	\$B	\$C
10	-0.5	81	136	0.9	101	92	122	69	191	349
20	20	20	25	30	3	10	10	25	20	10

Performance									
WDA	ADG	REA	BF	IMF	Frame	BIRTH WT	START WT	FINAL WT	
3.2	3.58	14.2	0.31	5.07	5.6	69	807	1165	

560 is a son out of our donor, JFCC Frosty Elba 345, who is a full sib to the top-selling bull in the 2024 Badgerland Bull sale, commanding \$27,500. This heifer bull brings loads of excellence- elite level Teat and Udder EPDs and breed leading \$M, \$C, \$F, and \$W indexes.
 This bull comes with looks that will stop you dead in your tracks!

75 **JRQC NEWMAN** 3662588 4/7/2025 **ADG Ratio 100**
 JOHN ROECKER JR CATTLE COMPANY **COLOR BLACK WDA Ratio 100**
 PO BOX 12, BROWNSVILLE, WI, 53006 920-238-1513 **% OF BREED H/P/S P PEN 5**

LIMFLEX

VL HUNKER DOWN 003H
 WULFS KA-CHING
 WULFS HANDWROTE 0762H
 TMCK HYDRAULIC 17Y
 MAGS EIRA
 MAGS ZEES

EPD'S/ac										
CED/%	BW/%	WW/%	YW/%	MILK/%	\$MPI/%	MB/%	REA/%	\$IPI/%	\$TPI/%	
12	1.5	85	138	24	90.9	-0.01	1.15	117.4	137.9	
30	65	10	10	65	35	90	4	55	20	

Performance									
WDA	ADG	REA	BF	IMF	Frame	BIRTH WT	START WT	FINAL WT	
3.51	3.56	18.19	0.25	2.25	5.5	90	809	1165	

JRQC Newman is a stout black Lim-Flex bull with muscle, structural soundness, and eye appeal.
 A practical herd sire prospect built for performance and longevity.

76 **NBF J-E-T SETTER 37N** 44702393 2/21/2025 **ADG Ratio 93.7**
 MATT MILLER JET CATTLE **COLOR R/W WDA Ratio 97.3**
 2685 E. BELLEVUE HWY, CHARLOTTE, MI, 48813 517-202-3628 **% OF BREED 100 H/P/S S PEN 6**

HEREFORD

THM DURANGO 4037
 CRR ABOUT TIME 74B
 CRR D03 CASSIE 206
 LCC FBF TIME TRAVELER 480
 PRR MRK STORMARA 181F
 PRR RMK STORM 432B

EPD'S/ac										
CED/%	BW/%	WW/%	YW/%	MILK/%	MCE/%	MB/%	REA/%	BMI/%	CHBI/%	
-2.8	3.1	53	80	20	-2.7	-0.16	0.1	306	61	
93	61	71	81	89	92	100	96	87	99	

Performance									
WDA	ADG	REA	BF	IMF	Frame	BIRTH WT	START WT	FINAL WT	
2.92	2.86	11.4	0.17	1.76	4.6	85	814	1100	

ET generated prospect with tremendous potential to improve commercial and purebred herds alike. Outstanding Confirmation and phenotype. Will produce highly sought after black and red baldies!

77 **JFCC DELMONICO 562** 5067975 3/20/2025 **ADG Ratio** 95.099
 KEVIN & TERRI JOHNSON JOHNSON FAMILY CATTLE **COLOR** BLACK **WDA Ratio** 101.59
 W8878 JELLEN RD, SPOONER, WI, 54801 715-498-9328 **% OF BREED** 100 **H/P/S P** **PEN** 6

REDANGUS

DB ICONIC G95
 JFCC DELMONICO
 JOHNSON FOREVER LADY 052
 HXC DECLARATION 5504C
 JFCC BLW PATRICIA ROSE 882
 HXC PATRICIA ROSE 102Y

EPD'S/ac									
CED/%	BW/%	WW/%	YW/%	MILK/%	STAY/%	REA/%	HB/%	GM%	PRO/%
16	-2.2	85	139	23	11	0.34	42	92	134
22	43	5	5	77	87	12	70	2	14

Performance									
WDA	ADG	REA	BF	IMF	Frame	BIRTH WT	START WT	FINAL WT	
3.29	3.53	13.82	0.26	3.46	5.2	80	797	1150	

We combined the best of both worlds, the cow power of Patricia Rose and the carcass value of our Angus GENEX sire, JFCC Delmonico. What you get is an awesome numbered calving ease bull that can add pounds to your calf crop and make some outstanding replacement heifers.

78 **AHAA SUNRISE TYPHOON 2509** 5082223 3/13/2025 **ADG Ratio** 97.5
 ARNOLD & ALICIA ADAMS AHA ACRES **COLOR** RED **WDA Ratio** 100
 2062 FOUNTAIN BLUFF LANE, PLATTEVILLE, WI, 608-642-6982 **% OF BREED** 100 **H/P/S P** **PEN** 6

REDANGUS

RED SSS TYCOON 225E
 W SUNRISE TYPHOON 604H
 RED HOWE JOANNA 145C
 RED U-2 RECKONING 149A
 SIX MILE MS PATHY 610C
 RED SIX MILE MS PATHY 514A

EPD'S/ac									
CED/%	BW/%	WW/%	YW/%	MILK/%	STAY/%	REA/%	HB/%	GM%	PRO/%
12	-1.1	54	84	27	12	.07	22	40	61
54	64	88	88	38	82	61	93	76	95

Performance									
WDA	ADG	REA	BF	IMF	Frame	BIRTH WT	START WT	FINAL WT	
3.24	3.62	12.4	0.2	2.33	4.9	80	793	1155	

Balance is the name of the game with this Canadian bred prospect that will add frame and stoutness. From the heart of the 6 Mile program, this bull is later maturing with style, plenty of hip and a great disposition. His full sisters are beautiful and are the front pasture type. Flexible enough to use on heifers to get growthy calves but then also make your own Red influenced replacements. If you've been looking for an outcross pedigree, look no further!

79 **KFA/D3C BLACK LICORICE N150J** 4634462 2/25/2025 **ADG Ratio** 86.9
 JUSTIN & ASHLEY KIMBALL **COLOR** BLACK **WDA Ratio** 90.4
 N8332 STATE HWY 55, SEYMOUR, WI, 920-259-9721 **% OF BREED** 100 **H/P/S P** **PEN** 6

SIMMENTAL

HPF/HILL UPRISING C104
 SO REMEDY 7F
 B&K CREAM SODA 8D
 PROFIT
 KFA STRAWBERRY LICORICE JZ50
 LSCC/SAS LICORICE C800

EPD'S/ac									
CED/%	BW/%	WW/%	YW/%	MILK/%	MCE/%	MWW/%	MB/%	REA%	API/%
8.1	2.7	75.7	114.9	20.6	3.9	58.4	-.09	0.69	105.2
69	76	67	58	71	81	72	92	85	90

Performance									
WDA	ADG	REA	BF	IMF	Frame	BIRTH WT	START WT	FINAL WT	
2.9	3.23	12.74	.09	1.76	5.1	82	760	1082	

80 **TPFC NILE 11N** 4554607 2/25/2025 **ADG Ratio 110.2**
 JEREMY BOBEK TREMBLING PRAIRIE **COLOR RED WDA Ratio 101.1**
 N2575 CTY RD B, MARKESAN, WI, 53946 920-295-9072 **% OF BREED 100 H/P/S P PEN 6**

SIMMENTAL

WHF QUANTUM G18
 TPHT MILE HIGH K352H
 TPHT DIVA'S DELIGHT H352
 W/C FORT KNOX 609F
 DWYER/COX GEMSTONE 127J
 TNGL A GEMSTONE A527

EPD'S/ac									
CED/%	BW/%	WW/%	YW/%	MILK/%	MCE/%	MWW/%	MB/%	REA%	API/%
7	2.6	73.5	112.9	23.6	4.3	60.4	0.25	0.91	121.6
77	75	73	63	48	75	64	38	44	70

Performance									
WDA	ADG	REA	BF	% IMF	Frame	BIRTH WT	START WT	FINAL WT	
3.24	4.09	12.6	0.17	2.16	5.6	87	801	1210	

11N is red Simmental bull through and through, sired by TPHT Mile High that we spotted at the Denver stock show in 2022 and was the high seller yearling Simmental bull that year. 11N's dam is a big powerful nicely structured PB Simmental which was a high seller at Dwyer's 2022 Next Generation Female Sale. If you want to add a little color or maintain your red angus color without sacrificing look, here's one to add to your herd.

81 **KNN NETWORKH 8N** 4579648 3/2/2025 **ADG Ratio 99**
 KURT & NETTIE NELSON KNN FARMS **COLOR BLACK WDA Ratio 92.5**
 W5137 290TH AVE, BAY CITY, WI, 54723 651-246-8774 **% OF BREED 50 H/P/S P PEN 6**

% SIMMENTAL

HOOK'S FULL FIGURES 11F
 FIVE STAR JACKSON J10
 KBHR F316
 MMM UNTOUCHABLE W810
 KNN KASHIER 8H
 KNN KIA RIO 9F

EPD'S/ac									
CED/%	BW/%	WW/%	YW/%	MILK/%	MCE/%	MWW/%	MB/%	REA%	API/%
14.8	0.1	75	109.8	26.1	9.3	63.5	0.35	0.88	140.8
23	68	61	73	29	15	49	59	20	45

Performance									
WDA	ADG	REA	BF	% IMF	Frame	BIRTH WT	START WT	FINAL WT	
3.32	4.18	13.3	0.15	3.27	5.7	82	802	1220	

81 If you want a maternal bull, look no further! This is your moderate frame, calving-ease son out of Five Star Jackson, who has eye appeal that does a lot of things well. Rugged made, flexible with the genetic profile to make daughters you will want to keep. His dam a fullblood South Devon is well balanced all around with a flawless udder and lots of milk! He would be a perfect cross for optimal heterosis.

82 **RRF CORNERSTONE N06** 21289880 3/9/2025 **ADG Ratio 105.1**
 MATT SOLVERSON ROCKY ROAD FARMS **COLOR BLACK WDA Ratio 98.2**
 11124 STATE RD 23, DARLINGTON, WI, 53530 608-482-1765 **% OF BREED 100 H/P/S P PEN 6**

ANGUS

EZAR STEP UP 917B
 BASIN KEYSTONE 2021
 BASIN JOY 9140
 CONNEALY CONFIDENCE PLUS
 WOODHILL EVERGREEN D65-G197
 WOODHILL EVERGREEN Z33-D65

EPD'S/ac										
CED/%	BW/%	WW/%	YW/%	MB/%	\$M	\$W	\$F	\$G	\$B	\$C
9	-1.2	76	138	0.8	85	85	109	70	180	318
30	10	30	25	40	15	15	25	25	25	15

Performance									
WDA	ADG	REA	BF	% IMF	Frame	BIRTH WT	START WT	FINAL WT	
3.38	4.41	15.3	0.26	3.46	4.8	54	779	1220	

This good-looking, balanced EPD calving ease stud has a pedigree of Woodhill maternal excellence with an impressive sire. His docility is an added incentive to his total package.

83 **STUMP FRANCHISE N5253** 5069205 3/7/2025 **ADG Ratio** 86.1
 RYAN O'CONNELL STUMPTOWN CATTLE **COLOR** RED **WDA Ratio** 93.5
 6629 STUMPTOWN RD, PLATTEVILLE, WI, 53818 608-732-2433 **% OF BREED** 100 **H/P/S P PEN** 6

RED ANGUS

SPUR FRANCHISE OF GARTON
 9 MILE FRANCHISE 6305
 C-BAR ABIGRACE Y11
 GMRA DEUCES 2222
 DYK RED BIRD 1944-5105
 5L BLACKBIRD 1322-1944

EPD'S/ac									
CED/%	BW/%	WW/%	YW/%	MILK/%	STAY/%	REA/%	HB/%	GM%	PRO/%
19	-5.3	60	108	36	15	0.37	69	70	139
7	5	74	43	1	45	10	21	17	11

Performance									
WDA	ADG	REA	% BF	IMF	Frame	BIRTH WT	START WT	FINAL WT	
3.02	3.2	13.41	0.25	4.28	4.4	74	778	1097	

Stump Franchise N5253 is a full brother to the highly regarded Genex AI sire 9 Mile Enterprise 8180 (Genex 001AR00977). Sharing the exact same elite genetics from 9 Mile Franchise 6305 and the productive DYK Red Bird 1944-5105 dam line, this bull delivers the same standout phenotype: big volume and capacity, exceptional fleshing, rock-solid feet and legs, and effortless movement. Proven to combine calving ease with growth and maternal strength, Enterprise sons are favorites among registered and commercial breeders alike - here's your opportunity to secure the same powerful package in a herdsire prospect!

84 **JFCC HOLLYWOOD 526** 5078415 3/1/2025 **ADG Ratio** 128.6
 KEVIN & TERRI JOHNSON JOHNSON FAMILY CATTLE **COLOR** RED **WDA Ratio** 105.4
 W8878 JELLEN RD, SPOONER, WI, 54801 715-498-9328 **% OF BREED** 100 **H/P/S P PEN** 6

REDANGUS

BROWN CRSB CONFIDENCE G1410
 PIE HOLLYWOOD 222
 PIE 0105
 9 MILE FRANCHISE 6305
 C-BAR STONY 907G
 ADHM STONY 503C

EPD'S/ac									
CED/%	BW/%	WW/%	YW/%	MILK/%	STAY/%	REA/%	HB/%	GM%	PRO/%
16	-3	78	131	33	9	0.6	8	85	93
23	29	13	10	3	96	2	98	5	67

Performance									
WDA	ADG	REA	% BF	IMF	Frame	BIRTH WT	START WT	FINAL WT	
3.41	4.78	13.21	0.27	2.34	4.2	89	780	1257	

Power in the blood! This young bull is a maternal sib to the GENEX sire Collateral, who is one of the most widely used AI bulls in the breed. His dam is a leading donor in the C-Bar program and continues to impress. His sire, Hollywood, is the \$400,000 high selling bull in the 2023 Pieper bull sale, and semen continues to be limited. 526 has an impressive set of EPDs behind him with great GM, CED, BW, WW, YW, MILK, MARB, and REA.

85 **KFA/D3C NILLA WAFER N350J** 4634463 3/2/2025 **ADG Ratio** 102
 JUSTIN & ASHLEY KIMBALL **COLOR** BLACK **WDA Ratio** 95.5
 N8332 STATE HWY 55, SEYMOUR, WI, 920-259-9721 **% OF BREED** 100 **H/P/S P PEN** 6

SIMMENTAL

HPF/HILL UPRISING C104
 SO REMEDY 7F
 B&K CREAM SODA 8D
 PROFIT
 KFA STRAWBERRY LICORICE JZ50
 LSCC/SAS LICORICE C800

EPD'S/ac									
CED/%	BW/%	WW/%	YW/%	MILK/%	MCE/%	MWW/%	MB/%	REA%	API/%
6.9	4.5	91.0	137.5	20.6	4.2	66.1	-.09	0.79	109.8
78	93	15	18	71	76	37	92	70	85

Performance									
WDA	ADG	REA	% BF	IMF	Frame	BIRTH WT	START WT	FINAL WT	
3.06	3.79	12.4	0.18	2.11	5.2	80	749	1127	

86**D3C DOUBLE UP SLIDER N50L**

4569928

3/19/2025

ADG Ratio 91.2

BRIAN & MACKENZIE PONEK DIAMOND COULEE CATTLE

COLOR BLACK**WDA Ratio 94.3**

87535 MARSHALL AVE, STRUM, WI, 54770

920-217-1610

% OF BREED 100**H/P/S P PEN 6****SIMMENTAL**

W/C DOUBLE DOWN 5014E
 WHF/JS/CCS DOUBLE UP G365
 WHF SUMMER 365C
 ROCKING P PRIVATE STOCK H010
 KFA MISS MOCKINGBIRD Z50L
 KFA STRAWBERRY LICORICE JZ50

EPD'S/ac									
CED/%	BW/%	WW/%	YW/%	MILK/%	MCE/%	MWW/%	MB/%	REA%	API/%
13.3	0.2	76.5	100.4	16.5	7	54.7	0.14	0.57	138.9
18	30	63	86	93	28	88	57	95	45

Performance									
WDA	ADG	REA	BF	% IMF	Frame	BIRTH WT	START WT	FINAL WT	
3.03	3.39	12.2	0.16	1.77	5.3	71	724	1062	

Calving ease prospect out a first calf heifer with a can't miss pedigree Double Up x Private Stock.
 One of the younger bulls on test.

87**NBF UNLIMITED 809N**

44695490

2/15/2025

ADG Ratio 96.9

MATT MILLER

NARROW BROOK FARMS

COLOR R/W**WDA Ratio 89.7**

2685 E. BELLEVUE HWY, CHARLOTTE, MI, 48813

517-202-3628

% OF BREED 100**H/P/S P PEN 6****HEREFORD**

NJW 98S R117 RIBEYE 88X
 SCG SHOWTIME NO LIMIT 111
 TCC MS DIANA 01
 NBS LOW VOLTAGE 402F
 NBF STACIE LV 809K
 MF 486 STACIE TIDE 1809

EPD'S/ac									
CED/%	BW/%	WW/%	YW/%	MILK/%	MCE/%	MB/%	REA/%	BMI/%	CHBI/%
-1.1	3.8	49	79	20	1	-.04	0.19	283	96
87	75	84	83	89	59	92	92	94	91

Performance									
WDA	ADG	REA	BF	% IMF	Frame	BIRTH WT	START WT	FINAL WT	
2.69	2.96	11.3	0.2	1.63	3.9	82	734	1030	

ET generated prospect with tremendous potential to improve commercial and purebred herds alike. Outstanding Confirmation and phenotype. Will produce highly sought after black and red baldies!

88**J-M RANCH SCOTCHMAN 505**

21325643

3/6/2025

ADG Ratio 97.7

JEFF MORRISSETTE

J-M RANCH

COLOR BLACK**WDA Ratio 92.2**

W5721 HARVEY RD, POYNETTE, WI, 53955

608-235-9498

% OF BREED 100**H/P/S P PEN 6****ANGUS**

CONNEALY CLARITY
 CONNEALY SCOTCHMAN
 PASHA OF CONANGA 557P
 LINZ ACCURACY 2397-6006
 LINZ LADY ACCURACY 544-0256
 CAV LADY UNANIMOUS 2145-5214

EPD'S/ac										
CED/%	BW/%	WW/%	YW/%	MB/%	\$M	\$W	\$F	\$G	\$B	\$C
4	2.3	92	153	0.7	90	95	119	59	179	322
70	75	4	10	50	10	4	15	40	25	15

Performance									
WDA	ADG	REA	BF	% IMF	Frame	BIRTH WT	START WT	FINAL WT	
3.17	4.1	15.1	0.24	3.57	4.5	83	745	1155	

Here's a bull that if you sell feeder's or finish them out will give you pounds of growth.
 Stands on a excellent set of feet and legs. Excellent disposition. 505 will be deep and thick.
 His two brothers from 2024,2025 test sold north of \$6000.00 respectfully.

89 **514N** 4572024 2/25/2025 **ADG Ratio 101.6**
 PHILLIP BROWN BROWN FARMS **COLOR** BWF **WDA Ratio 92.7**
 5838 S. GRAS RD , ELIZABETH, IL, 61028 815-238-9033 **% OF BREED** 100 **H/P/S P PEN 6**

SIMMENTAL

SAS BIG CASINO H214
 SAS CASINO K359
 SAS ARAPAHOE F356
 WBF MIDNIGHT B152
 ALYA JALYN
 MJF LORETTA

EPD'S/ac									
CED/%	BW/%	WW/%	YW/%	MILK/%	MCE/%	MWW/%	MB/%	REA%	API/%
10.6	0.2	78.2	119.4	18.3	6.8	57.3	0.01	0.82	126.1
42	30	54	48	85	31	76	80	60	60

Performance									
WDA	ADG	REA	BF	% IMF	Frame	BIRTH WT	START WT	FINAL WT	
2.98	3.77	12.74	0.19	2.08	5.1	78	733	1110	

90 **MAR MIC CONGRESS 105-555** 21296952 3/13/2025 **ADG Ratio 98.2**
 MATT MCNETT MAR MIC FARM **COLOR** BLACK **WDA Ratio 94**
 10958 MINE ROAD, CUBA CITY, WI, 53807 608-770-3695 **% OF BREED** 100 **H/P/S P PEN 6**

ANGUS

G A R HOME TOWN
 CROUCH CONGRESS
 CAV LADY UNANIMOUS 2145-5214
 BALDRIDGE COLONEL C251
 MAR MIC LADY COMPLETE 921-326
 MAR MIC LADY COMPLE 3190-921

EPD'S/ac										
CED/%	BW/%	WW/%	YW/%	MB/%	\$M	\$W	\$F	\$G	\$B	\$C
7	0.3	73	140	1.1	50	77	114	88	202	312
45	30	40	20	20	85	25	20	10	15	20

Performance									
WDA	ADG	REA	BF	% IMF	Frame	BIRTH WT	START WT	FINAL WT	
3.24	4.12	13	0.21	4.97	5.8	87	743	1155	

Congress is built around carcass value and performance, backed by a sire making a strong mark on the Angus breed. His dam comes from the proven Lady Complete line at Linz Heritage, known for producing productive, long-lasting females. He's the kind that adds value where it counts.

91 **S/A ASTUTE 0292-2395** 21367636 2/20/2025 **ADG Ratio 82.1**
 ANDY & AMY STRASBURG STRASBURG ANGUS **COLOR** BLACK **WDA Ratio 81.7**
 6709 STATE RD 73, MARSHALL, WI, 53559 608-444-2637 **% OF BREED** 100 **H/P/S P PEN 6**

ANGUS

SITZ ACCOMPLISHMENT 720F
 WOODHILL ASTUTE
 WOODHILL EMPRESS D118-H062
 S A V TERRITORY 7225
 S/A ELBA 910-0292
 S/A ELBA 1810-910

EPD'S/ac										
CED/%	BW/%	WW/%	YW/%	MB/%	\$M	\$W	\$F	\$G	\$B	\$C
8	1.4	66	114	0.5	65	49	99	42	141	248
35	55	60	65	70	55	85	45	75	65	70

Performance									
WDA	ADG	REA	BF	% IMF	Frame	BIRTH WT	START WT	FINAL WT	
2.81	3.45	13.4	0.25	3.3	3.9	77	718	1062	

2395 is moderate framed calving ease bull. His dam is a square made Territory daughter, that is making a nice young cow.



WISCONSIN BEEF IMPROVEMENT ASSN.

RETURN ADDRESS
25732 HAMMER LANE
CUBA CITY, WI 53807



LOT 2



LOT 4



LOT 8



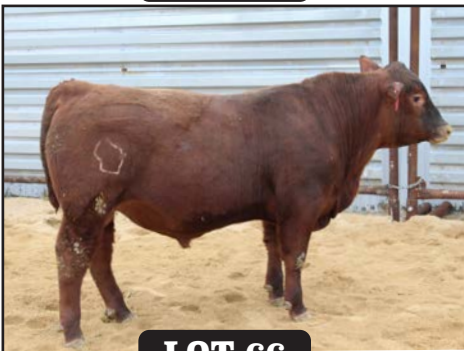
LOT 18



LOT 22



LOT 58



LOT 66



LOT 74



LOT 84