



68th Annual WBIA Bull Sale



mark your calendars

04.05.25

Platteville, Wisconsin

SALE STARTS AT 11AM

**Offering a variety of high quality yearling bulls
Online bidding by DVAuctions - Live Sale in Platteville, WI
In-person, phone & internet bidding available**



**WISCONSIN BEEF
IMPROVEMENT ASSN.**

608.342.1119 | www.wisconsinbeef.com
Follow us on Facebook for updates



**SCAN THE QR
CODE TO VIEW
AND SALE LOT
VIDEOS**



WISCONSIN BEEF IMPROVEMENT ASSN.

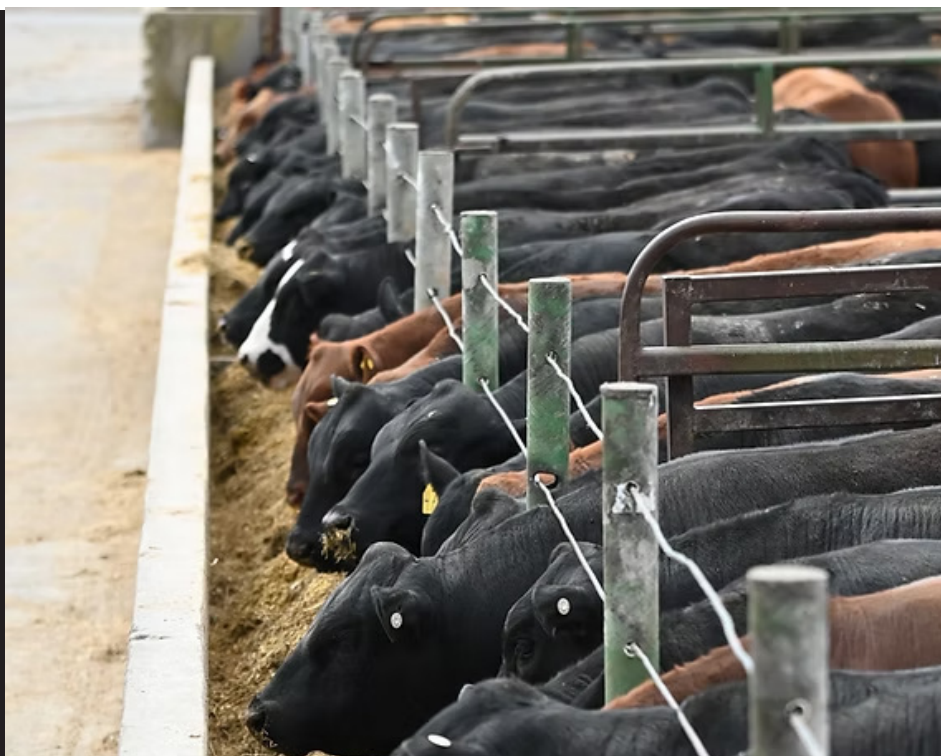


*longest running bull test
in the nation!*



WISCONSIN BEEF IMPROVEMENT ASSN.

The WBIA has conducted and overseen a performance bull test each year since 1957 and remains the oldest bull development program in the country. Since 1970, young beef bulls from all over Wisconsin and throughout the Midwest have been brought by top breeders to the University of Wisconsin - Platteville Pioneer Farm. Bulls prospects are developed on a forage based ration with their performance measured over a 100 day period. The top 60-65 prospects are sold at auction on the first Saturday in April at the UW-Platteville Pioneer Farm with the auction carried live online thru DV Auction.



OUR MISSION

Wisconsin Beef Improvement Association is dedicated to improving the beef industry and providing high-quality beef sires to our customers. Our board of directors is made up of consignors with an interest in serving the beef industry in Wisconsin.

**68TH ANNUAL
WBIA BULL SALE
APRIL 5, 2025 - 11 AM**



**SCAN THE QR
CODE TO VIEW
SALE LOT
VIDEOS**

WISCONSIN BEEF IMPROVEMENT ASSOCIATION
68th Annual Performance
Selected Bull Sale

Saturday, April 5th, 2025 - 11:00 a.m.

University of Wisconsin – Platteville, Wisconsin

29750 College Farm Road

(Three miles south of Platteville on Hwy 80, then east on College Farm Road, 3 miles)

*****2025 WBIA ANNUAL SALE WILL BE IN PERSON BUT WE WILL STILL ACCEPT
PHONE AND INTERNET BIDS*****

WISCONSIN BEEF IMPROVEMENT ASSOCIATION

Allan Arndt, President, Simmental Director	608-774-0136 aarndt@t6b.com
Alicia Prill-Adams, Red Angus Director	608-642-6982 prillada@uwplatt.edu
Tim Ryan, Angus Director	608-225-7993
Leanne Teasdale, Angus Director	608-669-1463
Hattie Arndt, Simmental Director	608-359-6842 SALE DAY
Brad Johnson, Red Angus Director	715-498-9328 SALE DAY
Tim Lundell, Director, Simmental	608-341-8296
Arnold Adams, Director at Large	608-514-3631 SALE DAY

Greg Miller, Consultant 608-778-8785

PROGRAM AND SALE STAFF

Facility Mgt – Alicia Prill-Adams & Justin Daugherty, 608-342-1119, 608-342-1850
Performance Program Records, Reports, Catalog – Krista Wellnitz & Alicia Prill-Adams
Sale Committee – WBIA Board
Pedigrees – Greg Miller
Cashier & Clerk – Chuck Steiner, Diane Jenkins and Staff
Lunch provided by the Grant County 4-H Livestock & Meats Judging Teams

This year's sale will be broadcast over

DVAuction
Broadcasting Real-Time Auctions

**Visit www.DVAuction.com
and Register Today!**

For General Questions Please Contact Our Office:
(402) 316-5460 or support@dvauction.com

Bidding is available through DV Auction. It is recommended to register in advance for prior approval and a bidding number at (402) 316-5460 or support@dvauction.com

Viewing of bulls in the pens at the facility through April 5th at 10:45 am is encouraged! Pens are outside and accessible at your convenience. Enter pens at your own risk. Individual bull videos are online at **DVAuction.com** and **wisconsinbeef.com**. Sale day supplement sheets with updates will be available on our DV sale site as well as on location the morning of the sale.

Internet bidding through DVAuction is encouraged. **Bidders must be approved and create an account by April 4th. This can be done online at DVAuction.com or by phone at 402-316-5460.**

DV is Click to bid or proxy bid ONLY and requires a good internet connection. Auction April 6th will be carried live online at DVAuction.com starting at 11 am. A bidding tutorial is available at DVAuction.com.

Phone bids will be accepted during the sale. **Bidders may contact WBIA at 608-342-1119 to get a buyer number and discuss lot numbers.** Leave contact information on the answering machine through April 4.

WBIA representatives will be available to call back to confirm orders and/or deliver your bid by phone during the auction. Purchases may be picked up immediately following the close of the auction. **See phone bank on inside cover in bold.**

Bulls can be picked up weekdays from 8am-4pm or weekends by appointment. Please call 608-342-1850 or 608-342-1119 to schedule pick up. Settlement required before release of any bull.

SALE ORDER – established by Consultant and Board of Directors

ID	BREED	PEN	ID	BREED	PEN	ID	BREED	PEN	ID	BREED	PEN
2	ANG	2	31	ANG	4	65	LFX	6	34	ANG	4
1	SIM	2	36	ANG	4	70	ANG	6	35	ANG	4
7	ANG	2	32	LFX	4	64	RAN	6	46	ANG	4
4	SIM	2	37	SIM	4	67	ANG	6	50	SIM	5
8	SIM	2	38	% SIM	4	9	ANG	2	55	% SIM	5
12	ANG	2	41	ANG	4	10	SIM	2	59	ANG	5
11	SIM	2	40	ANG	4	6	ANG	2	47	ANG	5
13	ANG	2	57	ANG	5	3	% SIM	2	49	ANG	5
30	% SIM	3	53	RAN	5	14	ANG	2	58	RAN	5
20	% SIM	3	62	% SIM	5	17	SIM	3	56	ANG	5
16	ANG	3	48	ANG	5	26	ANG	3	54	ANG	3
24	ANG	3	61	ANG	5	27	ANG	3	72	RAN	6
15	ANG	3	52	SIM	5	23	HER	3	73	ANG	6
18	SIM	3	51	RAN	5	21	ANG	3	74	ANG	6
29	SIM	3	60	RAN	5	25	ANG	3	71	ANG	6
22	ANG	3	68	RAN	6	39	ANG	4	77	ANG	6
45	RAN	4	75	RAN	6	43	SIM	4	78	ANG	6
44	ANG	4	63	% SIM	6	33	ANG	4			

General Information: Terms and Conditions

Terms: Terms of the sale are cash. Each bull will be sold to the highest bidder. The Auctioneer will settle any dispute as to bids. Bulls must be paid for by the buyer before being released. Each bull will be at the buyer's risk as soon as sold but will be cared for by the management for a reasonable time until he is loaded.

Registration: Certificates will be transferred to the buyer at the seller's expense.

Guarantee: WBIA will guarantee the libido of sale bulls according to the following provisions. Bulls will be guaranteed breeders by WBIA from sale day until August 1, approximately 110 days, provided the bull(s) have been properly managed & are in good health as diagnosed by a licensed veterinarian. The first \$2150 of the purchase price will be considered the salvage value of any sale bull & will not be reimbursed by WBIA. WBIA will cover the sale price of any non-breeder, as determined by the pregnancy status of exposed cows; up to \$4250 **provided** a replacement bull is purchased from any current WBIA member. Reimbursement formula used will be, Purchase Price minus Salvage Value (\$2150) for a total possible maximum reimbursement of \$2100. The money from this guarantee will be paid directly to the seller of the replacement bull, at the direction & consent of the buyer & the seller, & will be used to offset the purchase price of the replacement bull. Replacement bull price will be negotiated between buyer & seller. Replacement bull costs exceeding the WBIA guarantee will be paid by the buyer directly to the seller. If desired, the buyer may apply any reimbursement value toward the purchase of any bull at the next WBIA Annual Bull Sale. In this event, the reimbursement would be in the form of a credit to offset the auction price. WBIA President, Allan Arndt &/or any Board member(s) must be notified **FIRST** to start the replacement process. Unforeseen conditions will be addressed by & decided by WBIA Board action. Failure to breed due to injury or exhaustion is not covered. This guarantee is not an insurance policy.

Health: Bulls will be tested for TB, Bangs & Anaplasmosis only if required. Interstate health papers will be furnished on sale day. WBIA does not warrant bulls to be free of Johnes'. Any warrant is between buyer and seller.

Bids: Sealed bids may be sent to the Auctioneer, Ring men, Station Management, or any member of the WBIA Board of Directors. Sealed bids will be handled with strictest confidence. **Sale day phone bids will be accepted at numbers listed in bold on inside cover.** Bidding is available through DV Auction. **It is required to register in advance for prior approval and a bidding number at (402) 316-5460 or support@dvauction.com**

Announcements: Auction box announcements will take precedence over the printed materials in this catalog.

Obligation: It shall be expressly understood that all persons who attend this sale do so at their own risk. The Wisconsin Beef Improvement Association & the University of Wisconsin & its employees assume no liability, legal or otherwise, for accidents which may occur, & the terms of the sale shall constitute a contract between Buyer & Seller.

Requirements: The minimum requirements for entry into the test are 2.5 lbs WDA. Bulls failing breeding soundness exams, as established by the Society of Theriogenology, have been eliminated from the sale. Overall performance in conjunction with structural soundness has been evaluated by the consultant and board of directors. All bulls offered are believed to be sound. Since there are wide difference in opinion as to what structural soundness or unsoundness is, the final determination lies with the buyer.

Ration: All bulls were fed a TMR balanced with dry hay, corn silage, cracked corn, dried distillers' grain and a balancer mix, ad libitum, once a day.

General Considerations: Performance testing bulls in a central test station does not improve the bulls being tested. Its purpose is to aid in identifying bulls which are superior in growth performance. Even under the best possible conditions at a central test station, not all pre-test environmental effects can be eliminated. Therefore, small differences in measurements are not very meaningful. The only reasonable assumption is to assume that all bulls had an equal opportunity.

Post Sale: Bulls may stay at the test station for up to **20 days after the sale for a nominal charge of \$5.00/day. After 20 days, the price goes to \$25/day.** Please indicate your intentions when you pay for your bull. During this time bulls will be fed a maintenance ration and UW-Platteville Pioneer Farm is not liable for your bulls. To schedule pick up, please contact Pioneer Farm at 608-342-1850. Pick up is available M-F 8 – 4 pm or by appointment.

INDEX OF CONSIGNORS FOR 2024-2025 CENTRAL BULL TEST

Angus	Adams, Arnold & Alicia	Angus	Strasburg, Andy & Amy
Angus	Chadwick, Mike	Hereford	Ahrens, Caleb & Alissa
Angus	Fremstad, Jory	LimFlex	Roecker, John
Angus	Gerlach, Trent	Red Angus	Adams, Arnold & Alicia
Angus	Griswold Tim & Jane	Red Angus	Dunphy, Joe & Sue
Angus	Johnson, Brad & Lindsey	Red Angus	Habeck, Paul
Angus	Johnson, Kevin & Terri	Red Angus	Johnson, Brad & Lindsay
Angus	Judd, Andrew	Red Angus	Johnson, Kevin
Angus	Kiner, Ben	Simmental/Angus	Gerlach, Trent
Angus	Kuhle, David	Simmental/Angus	Lundell, Tim
Angus	Kuhn, Mark & Ruth	Simmental/Angus	Pionek, Brian & Mackenzie
Angus	Kunde, Richard & Susan	Simmental/Angus	Stichert, Wade
Angus	Marsh, Jim & Holly	Simmental/South Devon	Nelson, Kurt & Nettie
Angus	McNett, Matt	Simmental	Arndt, Allan
Angus	Morrisette, Jeff	Simmental	Bobek, Jeremy
Angus	Pieper, John	Simmental	Moss, Ayla & Kyson
Angus	Roecker, John	Simmental	Pionek, Brian & Mackenzie
Angus	Ryan, Tim	Simmental	Reinhardt, Kent & Wendy
Angus	Spring Creeks Cattle	Simmental	Reinhardt, Marcus & Liz
Angus	Solverson, Matt & Abigail		

All bulls have been DNA tested to guarantee parentage as well as EPD enhancement. Please visit the website of each breed to review their genomic guidelines and information it provides.

<https://redangus.org> www.angus.org www.simmental.org <https://hereford.org> <https://nalf.org>

For information on specific bulls contact Greg Miller, 608-778-8785

For information/catalog requests or general questions, contact Alicia Prill-Adams, 608-642-6982

All the information contained in the catalog plus pictures and video are available at the WBIA website at

<http://wisconsinbeef.com/home.html>

WBIA is not responsible for any inadvertent errors/or omissions to this catalog.

EPDS were current March 6, 2025

Management of Yearling Bulls

Pre-breeding Management

- Provide access to dirt lots of 1 to 2 acres in size to allow for ample exercise prior to the breeding season. This is **IMPERATIVE**. Bulls that are physically fit will have a higher degree of sexual drive and will remain sound.
- Allow bull to adjust to new environment for 60 days prior to breeding season.
- To keep the bulls in good condition, a ration which contains 11-12% crude protein and 70% TDN from medium quality hay along with some grain supplementation, should be provided.

Breeding Season Management

- DO NOT OVERUSE A YOUNG BULL DURING HIS FIRST BREEDING SEASON. "Rule-of-thumb" for the proper bull to female ratio is 1 cow per month of age of the bull up to 3 years of age. For example, a 15-month old bull could be run with 15 females. A mature 3-year old bull (36 months of age) should be allotted a maximum 36 females.

Age of Bull	Number of Females Exposed
12-15	10-12
15-18	12-18
18-24	18-25
24 mo. & older	25-40

- The young bull is still growing, and therefore may need to be provided some extra feed during the breeding season. Monitor the bull's body condition: if the bull is starting to lose condition, increase the amount of feed provided. Do not over condition.
- Observe the bull closely during the breeding season to ensure the bull is servicing the females, ideally observing the cows once to twice daily. Record the initial service date. If the female was not bred, she should begin cycling 15 - 25 days from that initial service date. It is important to monitor bulls for normal breeding behavior and to catch an injury early to prevent missed breeding opportunities.

Post-Breeding Management

- Evaluate the bulls' condition and, if needed, feed and manage them in such a way that they will be in moderate condition, a body condition score of 6 at the beginning of the next breeding season.

Bulls Are Guaranteed By The Breeder To Be Breeders If Well Managed. It is strongly encouraged that bulls be allowed ample exercise on dirt lots PRIOR to the beginning of breeding season.

FOR SAFETY REASON ALL BULLS WILL ONLY BE LOADED UPON COMPLETION OF THE SALE!

WBIA has transitioned away from a power index and is now marketing bulls that are balanced not only in growth and performance but also EPDs and structure, putting more emphasis on the total package. Our consultant has evaluated the bulls' multiple times through the testing period for phenotype and structural considerations. Bulls must meet or exceed the predicted ADG for the formulated ration to qualify for the sale. Those bulls not meeting that target were ineligible to participate in the sale. The board of directors and consultant have analyzed the bulls for structural concerns and made the final selection. Bulls are represented by the breeders. WBIA Board takes great care to accurately report data gathered here and supplied by breed associations.

Glossary of EPD's: EPDs are **BREED SPECIFIC** therefore comparing EPDs across breeds will not be accurate.

Expected Progeny Difference (EPD), is the prediction of how future progeny of each animal are expected to perform relative to the progeny of other animals listed in the database. EPDs are expressed in units of measure for the trait, plus or minus. Interim EPDs may appear on young animals when their performance has yet to be incorporated into the American Angus Association National Cattle Evaluation (NCE) procedures. This EPD will be preceded by an "I", and may or may not include the animal's own performance record for a particular trait, depending on its availability, appropriate contemporary grouping, or data edits needed for NCE.

Please note, we are not reporting the accuracy of the EPD but are reporting the percent within the breed that the individual's EPDs fall. E.G. If the percent is listed as 30, then the individual's EPDs are in the top 30% of the breed for that trait or is better than 70% of the breed. If the percent is listed as 70, then the individual's EPDs are in the top 70% of the breed for that trait or is better than 30% of the breed.

PRODUCTION

Calving Ease Direct (CED), is expressed as a difference in percentage of unassisted births, with a higher value indicating greater calving ease in first-calf heifers. It predicts the average difference in ease with which a sire's calves will be born when he is bred to first-calf heifers.

Birth Weight EPD (BW), expressed in pounds, is a predictor of a sire's ability to transmit birth weight to his progeny compared to that of other sires.

Weaning Weight EPD (WW), expressed in pounds, is a predictor of a sire's ability to transmit weaning growth to his progeny compared to that of other sires.

Yearling Weight EPD (YW), expressed in pounds, is a predictor of a sire's ability to transmit yearling growth to his progeny compared to that of other sires.

MATERNAL

Maternal Milk EPD (Milk), is a predictor of a sire's genetic merit for milk and mothering ability as expressed in his daughters compared to daughters of other sires. In other words, it is that part of a calf's weaning weight attributed to milk and mothering ability.

Maternal Weaning Weight (MWW), Pounds of weaning weight due to milk and growth.

Maternal Calving Ease (MCE), Percent of unassisted births in first-calving daughters.

Stayability (Stay), predicts differences in the ability of an animals' retained daughters to remain productive in the herd – calve every year – through 6 years of age. (Percent/High Value).

CARCASS

Ribeye Area (REA), REA EPDs reflect differences in an adjusted 365-day ribeye area measures based on carcass measurements of harvested cattle. Sires with relatively higher REA EPDs are expected to produce better muscled & higher percentage yielding slaughter progeny than will sires with lower REA EPDs.

Marbling (MB), Predicts differences for carcass marbling score as expressed in marbling score units. Higher values are positively correlated with higher carcass quality grades.

Carcass Weight EPD (CW), expressed in pounds is a predictor of the differences in hot carcass weight of a sire's progeny compared to progeny of other sires.

Yield Grade (YG), Yield grade score.

\$VALUE INDEXES

\$Value indexes are multi-trait selection indexes, expressed in dollars per head, to assist beef producers by adding simplicity to genetic selection decisions. The \$Value is an estimate of how future progeny of each sire are expected to perform, on average, compared to progeny of other sires in the database if the sires were randomly mated to cows and if calves were exposed to the same environment.

Maternal Weaned Calf Value (\$M), an index, expressed in dollars per head, predicts profitability differences from conception to weaning with the underlying breeding objective assuming that individuals retain their own replacement females within herd and sell the rest of the cull female and all male progeny as feeder calves. The model assumes commercial producers will replace 25% of their breeding females in the first generation and 20% of their breeding females in each subsequent generation. Traits included are as follows: calving ease direct, calving ease maternal, weaning weight, milk, heifer pregnancy, docility, mature cow weight, claw set and foot angle.

Beef Value (\$B), an index value expressed in dollars per head, is the expected average difference in future progeny performance for postweaning and carcass value compared to progeny of other sires.

Combined Value (\$C), an index, expressed in dollars per head, which includes all traits that make up both Maternal Weaned Calf Value (\$M) and Beef Value (\$B) with the objective that commercial producers will replace 20% of their breeding females per year with replacement heifers retained within their own herd. Expected progeny differences (EPDs) directly influencing a combined index: calving ease direct (CED) and maternal (CEM), weaning weight (WW), yearling weight (YW), maternal milk (Milk), heifer pregnancy (HP), docility (DOC), mature cow weight (MW), foot angle (Angle), claw set (Claw), dry matter intake (DMI), marbling (Marb), carcass weight (CW), ribeye area (RE) and fat thickness (Fat).

All-Purpose Index (API), Dollars per cow exposed under an all-purpose-sire scenario. Evaluates sires for use on the entire cow herd (bred to both Angus first-calf heifers and mature cows) with the portion of their daughters required to maintain herd size retained and the remaining heifers and steers put on feed and sold grade and yield.

Herdbuilder (HB), is a maternal selection index that predicts the economic differences of animals for traits that are important from conception through weaning. Expressed as dollars per head born, HB is calculated based on the scenario that bulls are mated to heifers and cows, replacement heifers are retained and all remaining progeny are marketed at weaning. Traits included in the HB index include Calving Ease Direct, Calving Ease Maternal, Weaning Weight, Milk, Mature Weight, Heifer Pregnancy and Stayability (Index/High Value).

Gridmaster (GM), is a selection index that predicts the average economic difference of non-replacement calves through the postweaning phase of production. GM places selection pressure on growth, feedyard performance and carcass traits. Expressed as dollars per head born, GM is calculated based on the scenario that progeny are fed out to slaughter and marketed on a quality-based carcass grid. Traits included in GM include Average Daily Gain, Carcass Weight, Dry Matter Intake, Marbling, Back Fat and Rib Eye Area (Index/High Value).

Profitability & Sustainability (ProS), is an all-purpose index that predicts average economic differences in all segments in the beef supply chain. This index is a combination of the breeding objectives modeled in the HerdBuilder and GridMaster selection indexes. In this index, replacement heifers are retained from within the herd and all remaining progeny are fed out to slaughter and sold on a quality-based grid. Traits included in this index include calving ease, growth, HPG, STAY, Mature Weight, Dry Matter Intake, and carcass traits. The resulting index is expressed in dollars per head born (Index/High Value).

American Angus Association \$Value Indexes

Dollar value indexes, or **\$Values**, are a tool used to select for several traits at once based on a specific breeding objective. An economic index approach takes into account genetic and economic values as well as the relationships between traits to select for profit.

ANGUS
THE BUSINESS BREED

Maternal Weaned Calf Value (\$M), an index expressed in dollars per head, predicts profitability differences in progeny due to genetics from conception to weaning. \$M is built off of a self-replacing herd model where commercial cattlemen replace 25% of their breeding females in the first generation and 20% in subsequent generations. Remaining cull females and all male progeny are sold as feeder calves. Increased selection pressure on \$M aims to decrease overall mature cow size and improve foot structure and fertility while maintaining weaning weights consistent with today's production.

Weaned Calf Value (\$W), an index expressed in dollars per head, provides the expected difference in future progeny preweaning performance from birth to weaning. \$W assumes that producers retain 20% of their female progeny for replacements and sell the rest of their cull female and male progeny as feeder calves. Over time, increased selection pressure on \$W will increase weaning and maternal milk traits while also continuing to increase mature cow size.

Cow Energy Value (\$EN), an index expressed in dollars per cow per year, assesses differences in cow energy requirements as an expected dollar savings difference in future daughters of sires. A larger value is more favorable when comparing two animals (more dollars saved on feed energy expenses). Components for computing \$EN savings differences include lactation energy requirements and energy costs associated with differences in mature cow size.

Feedlot Value (\$F), an index expressed in dollars per head, is the expected average difference in future progeny performance for post-weaning merit compared to progeny of other sires. The underlying objective assumes commercial producers will retain ownership of cattle through the feedlot phase and sell fed cattle on a carcass weight basis with no considerations of premiums or discounts for quality and yield grade.

Grid Value (\$G), an index expressed in dollars per carcass, is the expected average difference in future progeny performance for carcass grid merit, including quality and yield grade attributes, compared to progeny of other sires.

Beef Value (\$B), an index expressed in dollars per carcass, facilitates simultaneous multi-trait genetic selection for feedlot and carcass merit. \$B represents the expected average differences in the progeny postweaning performance and carcass value compared to progeny of other sires. This index assumes commercial producers wean all male and female progeny, retain ownership of these animals through the feedlot phase and market these animals on a quality-based carcass grid.

EPDS DIRECTLY INCORPORATED INTO EACH \$VALUE

TRAIT	MATERNAL			TERMINAL		
	\$M	\$W	\$EN	\$F	\$G	\$B
CED	✓					
BW		✓				
WW	✓	✓				
YW				✓		✓
CEM	✓					
Milk	✓	✓	✓			
MW	✓	✓	✓			
DOC	✓					
HP	✓					
Claw	✓					
Angle	✓					
DMI				✓		✓
CW				✓	✓	✓
RE					✓	✓
Marb					✓	✓
Fat					✓	✓

Red Angus Guide to EPDS and Indexes

ProS... Profitability and Sustainability is an all-purpose index that predicts average economic differences in all segments in the beef supply chain. This index is a combination of the breeding objectives modeled in the HerdBuilder and GridMaster selection indexes. In this index, replacement heifers are retained from within the herd and all remaining progeny are fed out to slaughter and sold on a quality-based grid. Traits included in this index include calving ease, growth, HPG, STAY, Mature Weight, Dry Matter Intake and carcass traits. The resulting index is expressed in dollars per head born (Index/High Value).

HB HerdBuilder is a maternal selection index that predicts the economic differences of animals for traits that are important from conception through weaning. Expressed as dollars per head born, HB is calculated based on the scenario that bulls are mated to heifers and cows, replacement heifers are retained and all remaining progeny are marketed at weaning. Traits included in the HB index include Calving Ease Direct, Calving Ease Maternal, Weaning Weight, Milk, Mature Weight, Heifer Pregnancy and Stayability (Index/High Value).

GM..... GridMaster is a selection index that predicts the average economic difference of non-replacement calves through the post-weaning phase of production. GM places selection pressure on growth, feedyard performance and carcass traits. Expressed as dollars per head born, GM is calculated based on the scenario that progeny are fed out to slaughter and marketed on a quality-based carcass grid. Traits included in GM include Average Daily Gain, Carcass Weight, Dry Matter Intake, Marbling, Back Fat and Rib Eye Area (Index/High Value).

CED Calving Ease Direct predicts differences in the percent of calves born unassisted out of 2-year-old dams. (Percent/High Value)

BW Birth Weight predicts differences in actual birth weight of progeny. (Pounds/Low Value)

WW Weaning Weight predicts differences in 205-day weaning weight. (Pounds/High Value)

YW Yearling Weight predicts differences in 365-day yearling weight. (Pounds/High Value)

ADG Average Daily Gain predicts differences in weight gain between 205 and 365 days of age. (Pounds/High Value)

DMI Dry Matter Intake predicts differences in daily feed intake as measured in a feedlot during the post-weaning period. (Pounds/Low Value)

MILK Milk predicts differences in weaning weight attributed to the milking ability of the animal's daughters. (Pounds/High Value)

ME Maintenance Energy predicts the difference in maintenance energy requirements. (Mcal per Month/Low Value)

HPG Heifer Pregnancy predicts differences in the percent of daughters who are able to conceive and calve at 2 years of age following exposure to breeding. (Percent/High Value)

CEM Calving Ease Maternal predicts differences in the percent of daughters who are able to calve unassisted as 2-year-old heifers. (Percent/High Value)

STAY Stayability predicts differences in the ability of an animals' retained daughters to remain productive in the herd – calve every year – through 6 years of age. (Percent/High Value)

MARB Marbling predicts differences in marbling score – amount of intramuscular fat measured at the 13th rib. (Marbling Score Units/High Value)

YG Yield Grade predicts differences in USDA Yield Grade, which is calculated using CW, REA and Fat. (Yield Grade Units/Low Value)

CW Carcass Weight predicts differences in actual hot carcass weight. (Pounds/High Value)

REA Ribeye Area predicts differences in square inches of ribeye area measured at the 13th rib. (Square Inches/High Value)

FAT Fat predicts differences in the depth of backfat measured between the 12th and 13th ribs. (Inches/Low Value)

RED ANGUS

RANCH TESTED. RANCHER TRUSTED.

RedAngus.org



Quick Reference Guide to ASA EPDs and \$ Indexes

Expected Progeny Differences (EPDs)

EPDs are the most accurate and effective tool available for comparing genetic levels. In using EPDs, the difference between two sires' EPDs represents the unit difference expected in the performance of their progeny. For example, if sires A and B have EPDs of +10 and -5, a 15-unit difference would be expected in their progeny (moving from -5 to +10 yields 15 units). Key to using EPDs is knowing what units they are expressed in. If the above case referred to weaning weight EPDs, A would be expected to sire 15 pounds more weaning weight than B. If calv-

ing ease were the trait, A would be expected to sire 15 percent more unassisted births in first-calf heifers; in other words, if B sired 30 assists in a group of 100 heifers, we'd expect A to require 15 assists. A percentile-ranking chart is required to determine where a bull's EPDs rank him relative to other bulls in the breed. For percentile rankings or more detailed information about EPDs and \$ indexes, [visit www.simmental.org](http://www.simmental.org), then click **Industry Science/Tech Advancement**.

Listed below are the units ASA EPDs are expressed in:

All-Purpose Index (\$API): Dollars per cow exposed under an all-purpose-sire scenario. (See below for more details).

Back Fat (BF): Inches of backfat at 475 days.

Birth Weight (BW): Pounds of birth weight.

Calving Ease (CE): Percent of unassisted births when used on heifers.

Docility (DDC): Percent of offspring receiving a disposition score of 1 (docile).

Carcass Weight (CW): Pounds of carcass weight at 475 days.

Maternal Calving Ease (MCE): Percent of unassisted births in first-calving daughters.

Milk (MLK): Pounds of weaning weight due to milk.

Marbling (MRB): Marbling score at 475 days.

Maternal Weaning Weight (MWW): Pounds of weaning weight due to milk and growth.

Ribeye Area (REA): Square inches of ribeye.

Stayability (STAY): Percentage of daughters remaining in the cowherd at six years of age.

Terminal Index (\$TI): Dollars per cow exposed under a terminal-sire scenario. (See below for more details).

Weaning Weight (WW): Pounds of weaning weight.

Yearling Weight (YW): Pounds of yearling weight.

Yield Grade (YG): Yield grade score at 475 days.

\$ Indexes

Though EPDs allow for the comparison of genetic levels for many economically important traits, they only provide a piece of the economic puzzle. That's where \$ indexes come in. Through well-conceived, rigorous mathematical computation, \$ indexes blend EPDs and economics to estimate an animal's overall impact on your cowherd enterprise. The same technology that led to the dramatic progress in swine, poultry and dairy genetics over the last several decades was used to develop the following \$ indexes:

All-Purpose Index (\$API):

Evaluates sires for use on the entire cow herd (bred to both Angus first-calf heifers and mature cows) with the portion of their daughters required to maintain herd size retained and the remaining heifers and steers put on feed and sold grade and yield.

Terminal Index (\$TI):

Evaluates sire for use on mature Angus cows with all offspring put on feed and sold grade and yield.

Using \$API and \$TI:

First, determine which index to use; if you're keeping replacements use \$API, if not, \$TI. Then, just as with EPDs,

zero in on the unit difference between bulls. (As described above, index units are in dollars per cow exposed.) The difference can be used to determine how much a bull is worth compared to another. Or, put another way, how much you can pay for one bull compared to another. For example, when buying an all-purpose-type sire, you can quickly figure a bull scoring +100 for \$API is worth an extra \$6,000 over a +50 bull if both are exposed to 30 cows over 4 years (\$50 diff. x 30 hd. x 4 yr. = \$6,000). A percentile-ranking chart is required to determine where a bull's index value ranks him relative to other bulls in the breed. For percentile rankings or more detailed information about EPDs and \$ indexes visit www.simmental.org.

Important disclaimer:

DO NOT compare index values of purebreds of different breeds, hybrids of different breed composition or purebreds with hybrids — our system was not developed to make valid comparison among these groups. Therefore, you must first determine the breed and breed composition appropriate for your herd and use index values to compare animals within that population.

1

RWA MONSTER

4374510

1/1/2024

KENT & WENDY REINHARDT

REINY WAY ACRES

COLOR

BL/WF

ON TEST WT

1020

W6924 GRASS RD, MERRILL, WI, 54452

715-573-7891

% OF BREED

100

H/P/S P**PEN**

2

SIMMENTAL

W/C LOADED UP 1119Y

W/C BANKROLL 811D

MISS WERNING KP 8543U

AJE/PB MONTECITO 63W

RS&T CROWN JEWELL F251

WELSHS HOT JEWELS 111W

EPD'S/ac									
CED/%	BW/%	WW/%	YW/%	Milk/%	MCE/%	MWW/%	MB/%	REA/%	API/%
12	1.1	70.5	103.5	16.1	6.7	51.3	0.07	0.8	112.9
45	45	80	80	99	35	95	74	40	83

Performance									
WDA	ADG	REA	BF	% IMF	Frame	Birth Wt	Final Wt	Adj 365D Wt	
3.48	4.75	15.88	0.35	3.11	5	85	1495	1465	

Beautiful black baldy bull. His sire W/C Bankroll will go down as one of the all-time greats for Simmental Bulls.

Daughters and Sons blanket the countryside due to their success. You will love the look of Monster and appreciate his growth and performance. We can't wait to see his progeny hit the ground.

One of our favorite bulls!

2

SPRING CREEKS ARCHITECT

21035546

3/24/2024

BART MITCHELL

SPRING CREEKS CATTLE

COLOR

BL

ON TEST WT

1085

48715 HILLDALE RD, WAUZEKA, WI, 53826

608-553-8070

% OF BREED

100

H/P/S P**PEN**

2

ANGUS

SYDGEN BLUEPRINT

S ARCHITECT 9501

S BLOSSOM 7514

EXAR CONSENSUS 1472B

SPRING CREEKS PRINCESS

EXAR PRINCESS 84141

EPD'S/ac										
CED/%	BW/%	WW/%	YW/%	HP/%	Milk/%	MB/%	RE/%	\$M	\$C	\$B
7	0.8	80	138	20.7	26	0.38	0.84	86	274	145
45	40	20	20	1	50	85	35	10	40	60

Performance									
WDA	ADG	REA	BF	% IMF	Frame	Birth Wt	Final Wt	Adj 365D Wt	
4.24	3.85	16	0.43	2.97	5.8	81	1470	1554	

This bull has been a Rockstar since birth! We absolutely love his dam as she consistently raises top notch calves.

Buy with confidence, we believe Spring Creeks Architect is a true breeding piece. He can add value to purebred breeders and commercial producers alike.

3

D3C KING CASH M11F

4404223

1/14/2024

BRIAN & MACKENZIE PIONEK

DIAMOND COULEE CATTLE

COLOR

BL

ON TEST WT

1017.5

87535 MARSHALL AVE, STRUM, WI, 54770

920-217-1610

% OF BREED

62.5

H/P/S P**PEN**

2

% SIMMENTAL

NCB COBRA 47Y

MAF KING COBRA 3C

MAF STAR 31A

TJ MAIN EVENT 503B

D3C ME NASH F11

Z123

EPD'S/ac									
CED/%	BW/%	WW/%	YW/%	Milk/%	MCE/%	MWW/%	MB/%	REA/%	API/%
9.90	0.8	91.4	133.0	20.6	5.4	66.3	0	1.0	103.3
83	64	8	23	75	73	30	99	8	92

Performance									
WDA	ADG	REA	BF	% IMF	Frame	Birth Wt	Final Wt	Adj 365D Wt	
3.56	4.68	18.19	0.27	3.81	5.2	83	1485	1294	

Really cool outcross bull, I find that using Canadian genetics infuses hardiness into my cattle- the kind that get right up and nurse even on the coldest of night. Big time growth and ribeye prospect out of a super efficient, moderate Main Event daughter with a perfect udder.

4

D3C COWBOY CUTTER M945G

4404237

2/3/2024

BRIAN & MACKENZIE PIONEK

DIAMOND COULEE CATTLE

COLOR BL**ON TEST WT** 1120

87535 MARSHALL AVE, STRUM, WI, 54770

920-217-1610

% OF BREED 100**H/P/S P PEN** 2**SIMMENTAL**

TRIPLE C SINGLETARY S3H

CCR COWBOY CUT 5048Z

CCR MS 4045 TIME 7322T

RUBYS TURNPIKE 771E

W/C MISS WERNING 945G

MISS WERNING 928W

EPD'S/ac									
CED/%	BW/%	WW/%	YW/%	Milk/%	MCE/%	MWW/%	MB/%	REA/%	API/%
9.5	4.7	97.9	149.3	24.3	5.2	73.2	0.41	0.8	149.4
75	95	4	8	38	60	8	16	45	28
Performance									
WDA	ADG	REA	BF	% IMF	Frame	Birth Wt	Final Wt	Adj 365D Wt	
3.99	4.63	15.6	0.3	4.72	6.4	81	1583	1465	

One of those true unicorn type bulls of the test. Cutter excels in all aspects of the industry big time growth, great maternal traits and carcass traits. Actual weaning weight of 962#, backed by our choice of bred females from the Werning program. A beautifully uddered baldy turnpike daughter that never disappoints.

You don't want to miss this guy on sale day.

6

J-M RANCH GROWTH FUND 403

21022199

2/2/2024

JEFF MORRISSETTE

J-M RANCH

COLOR BL**ON TEST WT** 1004

W5721 HARVEY RD, POYNETTE, WI, 53955

608-235-9498

% OF BREED 100**H/P/S P PEN** 2**ANGUS**

BASIN PAYWEIGHT 1682

DEER VALLEY GROWTH FUND

DEER VALLEY RITA 36113

LINZ ACCURACY 2397-6006

LINX LADY ACCURACY

CAV LADY UNANIMOUS

EPD'S/ac										
CED/%	BW/%	WW/%	YW/%	HP/%	Milk/%	MB/%	RE/%	\$M	\$C	\$B
6	1.6	90	156	I+9.2	24	I+.62	I+.67	60	275	166
55	60	5	5	85	65	60	55	65	40	35
Performance										
WDA	ADG	REA	BF	% IMF	Frame	Birth Wt	Final Wt	Adj 365D Wt		
3.66	4.54	14.11	0.38	4.59	5.8	83	1458	1356		

Growth is in his name and in his genetics! Take a look at his EPD profile and you will find a sire prospect that is going to add pounds to any herd being in the top 5% of the breed for both WW and YW. Take advantage of the opportunity to profit from his first set of calves. Ideal spread from BW to YW with the frame and maturity to handle cows.

7

S/A PROLIFIC 4449-2604

21033780

2/11/2024

ANDY & AMY STRASBURG

STRASBURG ANGUS

COLOR BL**ON TEST WT** 1050

6709 STATE RD 73, MARSHALL, WI, 53559

608-444-2637

% OF BREED 100**H/P/S P PEN** 2**ANGUS**

ELLINGSON PROFOUND 8155

ELLINGSON PROLIFIC

EA QUEEN 8070

BASIN PAYWEIGHT 1682

S/A GAMMER 2203-4449

S/A GAMMER 3230-2203

EPD'S/ac										
CED/%	BW/%	WW/%	YW/%	HP/%	Milk/%	MB/%	RE/%	\$M	\$C	\$B
1	4.6	98	168	17.9	26	0.58	0.44	91	304	164
90	95	1	2	10	50	65	80	4	20	35
Performance										
WDA	ADG	REA	BF	% IMF	Frame	Birth Wt	Final Wt	Adj 365D Wt		
3.84	4.45	14.91	0.29	4.21	5.2	75	1495	1351		

A powerhouse son of Ellingson Prolific. 2604 is an ET out of our donor 4449, she is a moderate female that is long bodied and correct made. Look to 2604 to add pounds to your calf crops while improving feet and structure.

8

RWA MAX

4374494

1/2/2024

MARCUS & LIZ REINHARDT

COLOR BL**ON TEST WT** 962

1802 WEST 1ST STREET, MERRILL, WI, 54452

715-573-7828

% OF BREED 100**H/P/S P PEN** 2**SIMMENTAL**

WLE COPACETIC E02
 ROCKING P PRIVATE STOCK H010
 RP/MP BUILT TO LOVE A021
 ALL CHISUM 638D
 ALL DIAMOND GIRL 036H
 LAA DIAMOND GIRL 649D

EPD'S/ac									
CED/%	BW/%	WW/%	YW/%	Milk/%	MCE/%	MWW/%	MB/%	REA/%	API/%
13.1	0.1	75.2	112.8	151	6	52.6	0.19	0.6	129.3
30	40	65	60	99	45	93	46	93	55

Performance									
WDA	ADG	REA	BF	% IMF	Frame	Birth Wt	Final Wt	Adj 365D Wt	
3.18	4.03	15.38	0.23	3.86	4.9	80	1365	1320	

This solid black stud was a standout since birth. His sire Private Stock has been producing awesome bulls and heifers across the Country. A docile growth and performance beef producing machine!
 Super excited to see what he produces over the years.

9

SPRING CREEKS JOBSITE 8039

21035512

2/20/2024

BART MITCHELL

SPRING CREEKS CATTLE

COLOR BL**ON TEST WT** 1032.5

48715 HILLDALE RD, WAUZEKA, WI, 53826

608-553-8070

% OF BREED 100**H/P/S P PEN** 2**ANGUS**

SYDGEN BLUEPRINT
 S ARCHITECT 9501
 S BLOSSOM 7514
 STEVENSON TURNING POINT
 SPRING CREEKS BANDO 8039
 LVLS MISS BANDO 775W

EPD'S/ac											
CED/%	BW/%	WW/%	YW/%	HP/%	Milk/%	MB/%	RE/%	\$M	\$C	\$B	
9	0.5	75	122	17.6	25	0.41	0.79	83	276	149	
30	35	30	45	10	55	80	40	10	35	55	

Performance									
WDA	ADG	REA	BF	% IMF	Frame	Birth Wt	Final Wt	Adj 365D Wt	
3.66	3.58	17.3	0.3	4.26	4.4	73	1390	1316	

Jobsite, our second Architect son on this sale, has a stacked pedigree. His sire is so consistent, and the dam, 8039, has had bulls at the Midland bull test, the Black Hills Stock Show, and our own female sale. She can be bred to anything and make it a good one.

10

DBLA JUSTICE M473

4375941

1/27/2024

ALLAN ARNDT

DOUBLE A SIMMENTALS

COLOR BL**ON TEST WT** 1025

4509 S. BELDINA RD, JANESVILLE, WI, 53546

608-774-0136

% OF BREED 100**H/P/S P PEN** 2**SIMMENTAL**

HOOK'S GALILEO 210G
 HA JUSTICE 30J
 HOOK'S DACIA 14D
 HOOK'S FAST MONEY 67C
 DBLA MS F825
 HATTIES HA24

EPD'S/ac									
CED/%	BW/%	WW/%	YW/%	Milk/%	MCE/%	MWW/%	MB/%	REA/%	API/%
9.8	1.2	86.7	138.6	313	5.8	74.3	0.49	0.9	155.7
70	48	24	12	9	50	8	11	35	19

Performance									
WDA	ADG	REA	BF	% IMF	Frame	Birth Wt	Final Wt	Adj 365D Wt	
3.6	4.28	13.8	0.39	4.04	6.1	92	1453	1298	

Homozygous Black, Homozygous Polled. Big volume, Rugged bull. EDPs say he's a Yearling wt, Milk and Marbling improver and does it with average BWT. Excellent API and TI. Recommended for cows. No Creep.

11

DBLA DUALLY M477

4375944

2/2/2024

ALLAN ARNDT

DOUBLE A SIMMENTALS

COLOR

RED

ON TEST WT

1020

4509 S. BELDINA RD, JANESVILLE, WI, 53546

608-774-0136

% OF BREED

100

H/P/S P PEN

2

SIMMENTAL

IR IMPERIAL D948

KBHR DUALLY H167

KBHR C078

RS&T HOMEBOY Y108

DBLA MS HOMEGIRL G960

HATTIES BEEF QUEEN HA25

EPD'S/ac									
CED/%	BW/%	WW/%	YW/%	Milk/%	MCE/%	MWW/%	MB/%	REA/%	API/%
9.3	0.8	81.5	112.3	23.	5.3	64.6	0.49	0.9	155.8
75	40	40	60	42	59	40	11	20	19

Performance									
WDA	ADG	REA	BF	% IMF	Frame	Birth Wt	Final Wt	Adj 365D Wt	
3.36	3.18	16.78	0.22	4.26	5.1	94	1338	1261	

Polled Red White-faced Bull. Balanced EPDs, Terrific eye appeal. Deep, thick, and square.

Average BWT, Top end for Stay ability, Marbling, API and TI.

Recommended for cows, heifers with discretion. No Creep.

12

2K JET BLACK 1154

20862804

1/18/2024

JIM & HOLLY MARSH

WALNUT GROVE ANGUS

COLOR

BL

ON TEST WT

1027.5

1910 CHICAGO RD, EARLVILLE, IL, 60518

847-652-0931

% OF BREED

100

H/P/S P PEN

2

ANGUS

CONNEALY BLACK GRANITE

BAR R JET BLACK 5063

BAR R IRIS ANITA 0113

G A R HOME TOWN

2K EVERELDA 2852

DEER VALLEY EVERELDA 5855

EPD'S/ac										
CED/%	BW/%	WW/%	YW/%	HP/%	Milk/%	MB/%	RE/%	\$M	\$C	\$B
2	3.2	96	169	12.9	28	1.25	0.84	55	327	210
85	90	2	2	45	35	15	35	75	10	10

Performance									Adj
WDA	ADG	REA	BF	% IMF	Frame	Birth Wt	Final Wt	365D Wt	
3.67	4.88	16.51	0.37	6.13	5.6	70	1515	1440	

A carefree bull, he does it all with little effort. Top 2% for weaning , yearling and carcass weight; Residual ADG top 4%.

Five \$ values in the top 5 to 15%; Add high maternal traits. Weaned at 821 #; The dam is our top 2-year-old that entered our donor pen last year. The Everelda cow family has been a favorite of ours for 3 decades.

13

TIMBER KNOLL COMET 2401

21025320

2/23/2024

ANDREW JUDD

TIMBER KNOLL ANGUS

COLOR

BL

ON TEST WT

968

9601 OVERLAND RD, MT HOREB, WI, 53572

608-516-0779

% OF BREED

100

H/P/S P PEN

2

ANGUS

G A R SURE FIRE 6404

GB FIREBALL 672

GB ANTICIPATION 432

JINDRA ACCLAIM

CJH TESIA 2216

CJH TILLY 1909

EPD'S/ac										
CED/%	BW/%	WW/%	YW/%	HP/%	Milk/%	MB/%	RE/%	\$M	\$C	\$B
12	-0.6	65	118	14.3	30	1.24	0.79	65	321	197
10	15	55	50	30	25	15	40	50	10	10

Performance									Adj
WDA	ADG	REA	BF	% IMF	Frame	Birth Wt	Final Wt	365D Wt	
3.58	3.82	17.3	0.39	6.03	5.6	69	1350	1428	

This Bull's Dam, CJH Tesla 2216 Has a different and refreshing pedigree being a

Jindra Acclaim x Deer Valley Unique daughter. She also had a weaning weight ratio of 111 in a very tough contemporary group. Dam and Individual were an easy to work pair, and the Dam has developed into a very long and deep cow, with excellent feet.

14

MC WEIGH UP GROWTH 216

21024604

2/16/2024

MIKE CHADWICK

CHADWICK ANGUS

COLOR

BL

ON TEST WT

1022.5

4952 TOWERLINE RD, MARSHALL, WI, 53559

608-279-2608

% OF BREED

100

H/P/S P**PEN**

2

ANGUS

BASIN PAYWEIGHT 1682

DEER VALLEY GROWTH FUND

DEER VALLEY RITA 36113

CONNEALY CAPITALIST 028

MC EVERGREEN CAPITALIST

MILL COULEE BARBARA K 414

EPD'S/ac										
CED/%	BW/%	WW/%	YW/%	HP/%	Milk/%	MB/%	RE/%	\$M	\$C	\$B
11	0.1	78	143	9.6	26	0.52	0.44	46	235	146
15	25	20	15	80	50	70	80	90	75	55

Performance										Adj 365D Wt
WDA	ADG	REA	BF	% IMF	Frame	Birth Wt	Final Wt			
3.78	4.38	15.8	0.43	4.43	4.9	72	1460			1434

Sired by Deer Valley Growth Fund out of MC Evergreen Capitalist 156. Goes back to the powerful Mill Coulee Barbara K 414 who is a daughter of Mill Coulee Barbara K 905. Growth Fund is the breeds most recent sire who has impacted the Angus breed in recent history.

15

RC ARCHITECT 147

20917689

2/10/2024

TIM RYAN

RYAN CATTLE

COLOR

BL

ON TEST WT

937

N1515 SUNSET DR, LODI, WI, 53555

608-225-7993

% OF BREED

100

H/P/S P**PEN**

3

ANGUS

SYDGEN BLUEPRINT

S ARCHITECT 9501

S BLOSSOM 7514

BALDRIDGE 38 SPECIAL

RC PRINCENE 17

RC PRINCENE 11

EPD'S/ac										
CED/%	BW/%	WW/%	YW/%	HP/%	Milk/%	MB/%	RE/%	\$M	\$C	\$B
0	3.3	90	155	16.8	32	0.83	0.19	99	297	153
90	90	5	10	15	15	40	95	2	20	50

Performance										Adj 365D Wt
WDA	ADG	REA	BF	% IMF	Frame	Birth Wt	Final Wt			
3.77	5.33	14.51	0.39	5.31	5.8	83	1470			1336

Sired by Architect who brings a big body, high fertility and fast gaining to offspring. Dam, RC Princene 17 has WW & YW EPDs in top 1% and excellent \$ Values in a deep-wide body on good feet. Excited about this bull's performance and balance of many traits. RC Architect 147 is a docile, wide, powerful bull with really good feet. 147 has an impressive combination of high EPDs, WW Top 5%, YW Top 10%, SC 30%, Doc 25%, HP 15%, \$M 2%, \$W 3%, and \$C 25%.

16

KNRF FAIR N SQUARE

21022943

1/12/2024

BEN KINER

KINER FARMS

COLOR

BL

ON TEST WT

990

4139 E 525TH RD, MENDOTA, IL, 61342

815-910-5390

% OF BREED

100

H/P/S P**PEN**

3

ANGUS

WOODHILL BLUEPRINT

MYERS FAIR-N-SQUARE M39

MYERS MISS BEAUTY M136

MOHNEN LONG HAUL 502

KNRF ROYAL QUEEN E1

KNRF ROYAL QUEEN

EPD'S/ac										
CED/%	BW/%	WW/%	YW/%	HP/%	Milk/%	MB/%	RE/%	\$M	\$C	\$B
1	2.1	67	116	11.9	32	0.79	0.68	82	267	143
90	70	50	55	60	15	45	50	15	45	60

Performance										Adj 365D Wt
WDA	ADG	REA	BF	% IMF	Frame	Birth Wt	Final Wt			
3.38	4.25	13.8	0.3	4.95	4.8	82	1415			1205

An outstanding calving ease herd sire prospect sired by the popular Myers Fair-N-Square, M12 offers the complete package. He will inject the growth and performance we all seek into his progeny and has the rugged durability to stand the test of time. Backed by an outstanding cow family, he blends his performance traits with strong maternal genetics, ensuring his daughters excel. He's the well-rounded choice for both growth and longevity in any program.

17

RWA MUFASA

4374505

1/3/2024

KENT & WENDY REINHARDT

REINY WAY ACRES

COLOR BL**ON TEST WT** 922

W6924 GRASS RD, MERRILL, WI, 54452

715-573-7891

% OF BREED 100**H/P/S P****PEN** 3**SIMMENTAL**

EGL FIRESTEEL 103F

WHF/JS/CCS WOODFORD J001

WHF SUMMER 365C

SFG COWBOY LOGIC D627

RWA KAYLIN

RWA GAIL

EPD'S/ac									
CED/%	BW/%	WW/%	YW/%	Milk/%	MCE/%	MWW/%	MB/%	REA/%	API/%
13.6	0.5	83.5	120.3	18.6	6.2	60.3	0.38	0.5	151.6
25	35	30	44	83	43	60	20	95	24

Performance									
WDA	ADG	REA	BF	% IMF	Frame	Birth Wt	Final Wt	Adj 365D Wt	
3.11	4.08	12.71	0.2	4.12	6	80	1330	1265	

The prolific EPD bull of our group this year. His sire Woodford has been utilized heavily across the Country.

Eye appealing look coupled with calving ease and performance all in one solid black package.

Excited to see his progeny in the future!

18

RWA MITCH-ET

4374502

1/10/2024

MARCUS & LIZ REINHARDT

COLOR RED**ON TEST WT** 894

1802 WEST 1ST STREET, MERRILL, WI, 54452

715-573-7828

% OF BREED 100**H/P/S P****PEN** 3**SIMMENTAL**

W/C RELENTLESS 32C

JSUL SOMETHING ABOUT MARY 8421

JBSF PROUD MARY

REMINGTON LOCK N LOAD54U

STF TRENDY BT26

STF ONYX 451W

EPD'S/ac									
CED/%	BW/%	WW/%	YW/%	Milk/%	MCE/%	MWW/%	MB/%	REA/%	API/%
14.1	1.8	70.5	109	12.	4.7	48	-0.04	0.9	110.9
15	60	80	68	99	68	99	90	28	85

Performance									
WDA	ADG	REA	BF	% IMF	Frame	Birth Wt	Final Wt	Adj 365D Wt	
3.24	4.69	13.32	0.17	2.67	4.9	90	1363	1335	

The solid red machine from our group this year. His sire SAM has been as hot as any bull in recent years in the Simmental breed. His semen is bringing \$350/straw. Mitch's dam is also a big time donor cow in the Simmy breed.

Great performance bull here that should sire you both red and black calves.

Can't wait to see them hit the ground!

20

GCCF LOVER BOY 10M

4416684

2/1/2024

TRENT GERLACH

GERLACH CATTLE COMPANY

COLOR Red**ON TEST WT** 905

10745 N WADDAMS GROVE RD, WINSLOW, WI,

608-426-4633

% OF BREED 75**H/P/S P****PEN** 3**% SIMMENTAL**

HTP/SVF DURACELL T52

THSF LOVER BOY B33

RP/MP RIGHT TO LOVE 015U

GEFF COUNTY O

MISS COUNTY O 226

NAY 1753

EPD'S/ac									
CED/%	BW/%	WW/%	YW/%	Milk/%	MCE/%	MWW/%	MB/%	REA/%	API/%
11.6	0.7	74	108.9	23.1	7.5	60.1	0.33	0.5	119.4
65	62	60	73	55	40	60	60	65	75

Performance									
WDA	ADG	REA	BF	% IMF	Frame	Birth Wt	Final Wt	Adj 365D Wt	
3.21	3.78	16.9	0.23	3.24	5.3	81	1283	1225	

10M is a moderate birth weight bull with plenty of eye appeal. A sound set of legs and feet under this bull will allow him to get out and breed cows for the long haul. A owned son of Lover Boy out of a powerful built County O Daughter brings plenty of maternal traits. This red calf has the maternal look to raise a nice of females or add pounds in the feedlot.

21

MC BARBARA RAINFALL 112

21024602

1/12/2024

MIKE CHADWICK

CHADWICK ANGUS

COLOR

BL

ON TEST WT

883

4952 TOWERLINE RD, MARSHALL, WI, 53559

608-279-2608

% OF BREED

100

H/P/S P**PEN**

3

ANGUS

S A V RAINFALL 6846

S A V GRAND CANYONJ 0969

S A V MADAME PRIDE 9477

CONNEALY CAPITALIST 028

MC BARBARA CAPITALIST 587

MC LEGACY TEN 154

EPD'S/ac										
CED/%	BW/%	WW/%	YW/%	HP/%	Milk/%	MB/%	RE/%	\$M	\$C	\$B
16	-2.4	45	84	5.5	30	0.65	0.06	67	217	116
2	3	95	95	95	25	60	95	45	85	90

Performance									
WDA	ADG	REA	BF	% IMF	Frame	Birth Wt	Final Wt	Adj 365D Wt	
3.07	4.05	11.61	0.32	4.45	4.5	76	1288	1159	

Dam is out of Barbara Capitalist 587 and the well respected Mill Coulee herd. Grandsire is S A V Rainfall who is sired by S A V Grand Canyon.

22

S/A TRADEMARK 169-1544

21035914

1/21/2024

ANDY & AMY STRASBURG

STRASBURG ANGUS

COLOR

BL

ON TEST WT

956

6709 STATE RD 73, MARSHALL, WI, 53559

608-444-2637

% OF BREED

100

H/P/S P**PEN**

3

ANGUS

SITZ RESILIENT 10208

J TRADEMARK 1037

MILL BRAE IDEN GEORGINA 4086

LD CAPITALIST 316

S/A EVERGREEN 066-169

S/A EVERGREEN 2144-066

EPD'S/ac										
CED/%	BW/%	WW/%	YW/%	HP/%	Milk/%	MB/%	RE/%	\$M	\$C	\$B
2	3.2	93	150	15.6	30	0.87	0.94	90	313	172
85	90	3	10	20	25	35	25	5	15	25

Performance									
WDA	ADG	REA	BF	% IMF	Frame	Birth Wt	Final Wt	Adj 365D Wt	
3.4	4.37	14.61	0.33	5.55	5.7	75	1393	1191	

1544 is a bull with a little added frame, his performance has been good on test. I would expect him to add pounds and carcass value to his calf crop. His donor dam is a maternal sister to the top selling bull in the 2024 Midland Bull test that sold to Hart Angus for \$46,000.

23

CMA 159H LIBERATION 2407

44596463

2/15/2024

CALEB & ALISSA AHRENS

CMA HEREFORDS

COLOR

RED/

ON TEST WT

908

W5177 TSCHUDY RD, MONROE, WI

608-346-9261

% OF BREED

100

H/P/S P**PEN**

3

HEREFORD

KJ BJ 309C LEADER 182F

KJ TWJ 907E LIBERTY 159H

KJ BJ 339A CHARDONNAY 907E

H DIMAGGIO 2094

CMA 2094 CLARA 1703

CMA 966R CLAIRISSA 1005

EPD'S/ac									
CED/%	BW/%	WW/%	YW/%	Milk/%	MCE/%	MB/%	REA/%	BMI	CHBI
2.70	4.7	71	117	34	-0.2	0.08	0.48	287	118
57	88	6	4	13	74	64	49		

Performance									
WDA	ADG	REA	BF	IMF	Frame	Birth Wt	Final Wt	Adj 365D Wt	
3.32	3.72	13.01	0.31	3.19	6.5	87	1280	1181	

This bull combines maternal and real world genetics. A big bellied, sound moving bull that will add pounds & improve udders along with doability. Sired by the popular Liberty who has taken the breed by storm and out of a great DiMaggio cow that consistently weans our heavier calves. 2407 is a maternal brother to multiple showing champions & high performers in other national test programs throughout the US. In today's time, ship the old bull & inject hybrid vigor into your commercial breeding program to create those baldies that push down the scales and create extra profits for your bottom-line.

24

JFCC TOP GUN 461

20911364

2/2/2024

BRAD & LINDSAY JOHNSON

JOHNSON FAMILY CATTLE

COLOR

BL

ON TEST WT

938

N6864 BOX ELDER RD, SHAWANO, WI, 54166

715-498-9328

% OF BREED

100

H/P/S P**PEN**

3

ANGUS

V A R FIRE POWER

SCHIEFELBEIN TOP GUN 522

FROSTY ELBA 4220

JINDRA ACCLAIM

NCA EVERGREEN ACCLAIM 1028

NCA EVERGREEN 13R 2023

EPD'S/ac										
CED/%	BW/%	WW/%	YW/%	HP/%	Milk/%	MB/%	RE/%	\$M	\$C	\$B
8	1.1	81	146	13.6	26	1.35	1.17	59	335	213
35	45	15	15	40	50	10	10	65	10	5

Performance										Adj 365D Wt
WDA	ADG	REA	BF	% IMF	Frame	Birth Wt	Final Wt			
3.53	4.55	15.41	0.27	6.06	5.3	75	1393			1209

Here's a stud sired by the popular Schiefelbein Top Gun, who has produced some of the most sought after cattle in the country. His dam has produced many stout calves including the second high selling bull in last year's WBIA sale. 461 also has outstanding EPDs- elite level growth, marbling and ribeye. His \$values are also outstanding. With such a powerful pedigree and genetic data, he should bring valued traits to any breeder looking to elevate their herd.

25

JRQC MAVERICK

21102743

3/20/2024

JOHN ROECKER

JR CATTLE COMPANY

COLOR

BL

ON TEST WT

880

PO BOX 12, BROWNSVILLE, WI, 53006

920-238-1513

% OF BREED

100

H/P/S P**PEN**

3

ANGUS

LD CAPITALIST 316

MUSGRAVE 316 EXCLUSIVE

MUSGRAVE PRIM LASSIE 163-386

S A V RAINDANCE 6848

JRQC MACI

SPRING CREEKS BARBARAMERE

EPD'S/ac										
CED/%	BW/%	WW/%	YW/%	HP/%	Milk/%	MB/%	RE/%	\$M	\$C	\$B
5	1.4	63	113	12.9	26	0.26	0.73	53	207	119
60	55	60	60	45	50	95	45	80	90	90

Performance										Adj 365D Wt
WDA	ADG	REA	BF	% IMF	Frame	Birth Wt	Final Wt			
3.7	4.2	16.3	0.43	5.58	5.1	89	1300			1351

Maverick is a great herd sire prospect. Sired by ST Genetics Musgrave 316 Exclusive and having SAV Raindance in the pedigree, he should sire outstanding calves.

26

BLACKBIRD ODYSSEY 433

21060283

3/7/2024

RICHARD & SUSAN KUNDE

KUNDE ANGUS

COLOR

BL

ON TEST WT

946

612 80TH AVE, BALDWIN, IA, 52207

563-249-5072

% OF BREED

100

H/P/S P**PEN**

3

ANGUS

S S ODYSSEY H71

S S ODYSSEY H71 OH28

S S MISS DATA MANAGER M519

S S FAST TRCK 3M2

FAST TRACK BLACKBIRD 730

ADVANTAGE BLACKBIRD 333

EPD'S/ac										
CED/%	BW/%	WW/%	YW/%	HP/%	Milk/%	MB/%	RE/%	\$M	\$C	\$B
6	2.1	61	102	11.8	24	0.76	0.68	76	245	130
55	70	70	75	60	65	45	50	25	65	75

Performance										Adj 365D Wt
WDA	ADG	REA	BF	% IMF	Frame	Birth Wt	Final Wt			
3.72	4.09	14.69	0.37	6.11	5.7	80	1355			1363

797 adj 205 wt. A maternal 1/2 brother to our bull that topped the ribeye scan in last year's test at 19 Sq. in. Out of a cow that never misses and has one of our top calves every year. His sire is at the top of the breed in docility score and has some very solid carcass numbers to go along with good growth figures. DDC

27

S/A PROLIFIC 3267-2574

21033779

2/3/2024

ANDY & AMY STRASBURG

STRASBURG ANGUS

COLOR

BL

ON TEST WT

930

6709 STATE RD 73, MARSHALL, WI, 53559

608-444-2637

% OF BREED

100

H/P/S P**PEN**

3

ANGUS

ELLINGSON PROFOUND 8155

ELLINGSON PROLIFIC

EA QUEEN 8070

HOOVER NO DOUBT

S/A MAIDEN 3100-3267

S/A MAIDEN 679-3100

EPD'S/ac										
CED/%	BW/%	WW/%	YW/%	HP/%	Milk/%	MB/%	RE/%	\$M	\$C	\$B
6	1	70	129	19	26	0.77	0.72	106	311	158
55	45	40	35	3	50	45	45	1	15	40

Performance									
WDA	ADG	REA	BF	% IMF	Frame	Birth Wt	Final Wt	Adj 365D Wt	
3.44	4.38	15	0.3	5.02	4.6	75	1368	1204	

The first of two flush brothers, 2574 is a calving ease Prolific son.

Dam is a moderate, powerful Hoover No Doubt daughter.

29

DBLA BOLD RULER M469

4375945

1/23/2024

ALLAN ARNDT

DOUBLE A SIMMENTALS

COLOR

BL

ON TEST WT

899

4509 S. BELDINA RD, JANESVILLE, WI, 53546

608-774-0136

% OF BREED

100

H/P/S HP**PEN**

3

SIMMENTAL

WS PROCLAMATION E202

KBHR BOLD RULER H152

BAR CK MS X38 106Z

HOOK'S FAST MONEY 67C

DBLA MS F826

DBLA MS RCCK B422ET

EPD'S/ac									
CED/%	BW/%	WW/%	YW/%	Milk/%	MCE/%	MWW/%	MB/%	REA/%	API/%
16.1	-2	77.7	124.9	24.3	10.7	63.1	0.45	0.7	162.4
10	5	55	35	37	2	47	15	70	13

Performance									
WDA	ADG	REA	BF	% IMF	Frame	Birth Wt	Final Wt	Adj 365D Wt	
3.22	4.16	13.63	0.17	3.95	5.4	88	1315	1203	

Homozygous Black, Homozygous Polled. EPD's offer outstanding Calving Ease, minus BWT, Maternal Calving ease and Marbling. API and TI are among the best. Use him on heifers and cows, keep all his daughters.

Maternal brothers sold here in 2023 and 2024. No Creep.

30

KNNF MASON 7M

4423943

2/26/2024

KURT & NETTIE NELSON

KNN FARMS

COLOR

BL

ON TEST WT

930

W5137 290TH AVE, BAY CITY, WI, 54723

651-246-8252

% OF BREED

50

H/P/S P**PEN**

3

% SIMMENTAL

CCR COWBOY CUT 5048Z

WS PROCLAMATION E202

WS MISS SUGAR C4

MJB DILLON 689D

KNN FALLON 35H

KNN FEBE 1E

EPD'S/ac									
CED/%	BW/%	WW/%	YW/%	Milk/%	MCE/%	MWW/%	MB/%	REA/%	API/%
13.6	-1	67.7	106	24.3	7.7	58.1	0.29	0.2	127.2
40	33	84	75	43	33	70	68	95	63

Performance									
WDA	ADG	REA	BF	% IMF	Frame	Birth Wt	Final Wt	Adj 365D Wt	
3.8	4.9	15.77	0.31	4.06	5.8	87	1420	1350	

PERFORMANCE ORIENTED! His dam is one of our favorite South Devon females that is a powerful, heavy milking great uddered Dillion daughter, from the MJB Ranch, MT. His sire Proclamation has impressive performance, extra volume, good feet, and structure with the added docility value. This elite genetic package has impressive numbers and will provide optimal By using a 3-way cross. Feel free to give us a call for more information on the South Devon cross.

31

GCC HIGH STANDARD 18M

21144088

2/2/2024

TRENT GERLACH

GERLACH CATTLE COMPANY

COLOR

BL

ON TEST WT

880

10745 N WADDAMS GROVE RD, WINSLOW, WI,

608-426-4633

% OF BREED

100

H/P/S P**PEN**

4

ANGUS

GCC GOLD STANDARD X615

C-4 HIGH STANDARDS 38H

C-4 ERICA MAY 181F

PF INSIGHT 6191

226K MAY

RPB 304 JAUNA LEADER 702

EPD'S/ac										
CED/%	BW/%	WW/%	YW/%	HP/%	Milk/%	MB/%	RE/%	\$M	\$C	\$B
0	4	57	102		24					
90	95	80	75	0	65	0	0	0	0	0

Performance										Adj 365D Wt
WDA	ADG	REA	BF	% IMF	Frame	Birth Wt	Final Wt			
3.1	3.53	13.51	0.17	3.95	5.3	84	1230			1184

18M is out of the former High Selling bull out of C-4 Ranch backed by Gold Standard. High Standard we feel has made a great impact already in our herd with great daughters and great sons 18M. 18M's mother is an easy keeping cow with a great udder.

32

JRQC MOWGLI

3203570

4/1/2024

JOHN ROECKER

JR CATTLE COMPANY

COLOR

RED

ON TEST WT

913

PO BOX 12, BROWNSVILLE, WI, 53006

920-238-1513

% OF BREED

68

H/P/S P**PEN**

4

LIMFLEX

BIEBER DEEP END B597

WULFS EMPRIZE 2424E

WULFS ZUNI 2424Z

WULFS EISENHOWER 3616E

JRQC JAVA

SPRING CREEKS DANNI 5254D

EPD'S/ac										
CED/%	BW/%	WW/%	YW/%	Milk/%	YG/%	CW/%	REA/%	MB/%	\$TPI/%	
9	1.4	89	139	31	-0.3	50	0.9	0.5	139.3	
757	60	4	10	10	10	15	10	15	4	

Performance										Adj 365D Wt
WDA	ADG	REA	BF	% IMF	Frame	Birth Wt	Final Wt			
4.03	4.55	15.8	0.36	3.8	6.2	87	1368			1515

If you are looking for growth, REA and MB, look no further than this Wulfs Emprize 2424E son. You will not want to miss him sale day!

33

MC CHAD TAHOE 2184

20893106

2/19/2024

MIKE CHADWICK

CHADWICK ANGUS

COLOR

BL

ON TEST WT

884

4952 TOWERLINE RD, MARSHALL, WI, 53559

608-279-2608

% OF BREED

100

H/P/S P**PEN**

4

ANGUS

TEHAMA UPWARD Y328

TEHAMA TAHOE B767

TEHAMA MARY BLACKBIRD Y684

PLATTEMERE WEIGH UP K360

MC WEIGH UP BARBARA 148

MILL COULEE BARBARA 112

EPD'S/ac										
CED/%	BW/%	WW/%	YW/%	HP/%	Milk/%	MB/%	RE/%	\$M	\$C	\$B
7	1.1	73	116	14.5	25	0.95	0.51	86	265	138
45	45	35	55	30	55	30	75	10	45	65

Performance										Adj 365D Wt
WDA	ADG	REA	BF	% IMF	Frame	Birth Wt	Final Wt			
3.52	4.56	15	0.31	5.37	4.7	77	1340			1247

Sired by Tehama Tahoe B767. This Bull should offer calving ease along with bulding a profitable cow herd. Customer Satisfaction!

34

J-M IRON HORSE 402

21022197

1/13/2024

JEFF MORRISSETTE

J-M RANCH

COLOR

BL

ON TEST WT

863

W5721 HARVEY RD, POYNETTE, WI, 53955

608-235-9498

% OF BREED

100

H/P/S P**PEN**

4

ANGUS

EXAR STALLION 7986

BIGK/WSC IRON HORSE O25F

EXAR HENRIETTA PRIDE 5702

HART NO DOUBT 9538

J-M RANCH LADY ACCURACY 201

LINZ LADY ACCURACY 5214-0256

EPD'S/ac										
CED/%	BW/%	WW/%	YW/%	HP/%	Milk/%	MB/%	RE/%	\$M	\$C	\$B
7	-0.4	79	133	I+9.1	20	I+.8	I+.80	67	300	180
45	20	20	25	85	90	35	35	45	20	20
Performance										Adj 365D Wt
WDA	ADG	REA	BF	IMF	Frame	Birth Wt	Final Wt			
3.17	4.62	14.51	0.31	5.5	4	68	1325			1225

A prospect that will provide versatility especially with heifers. His sire is a proven calving ease leader with outstanding performance numbers. Out of a young cow that is hitting her stride. This Iron Horse will give you the option to get the most out of your first calf heifers.

35

KUHLE TOP CUT H192 M390

20941613

3/31/2024

DAVID KUHLE

KUHLE ANGUS

COLOR

BL

ON TEST WT

909

1491 HWY 80, HAZEL GREEN, WI, 53811

563-542-0803

% OF BREED

100

H/P/S P**PEN**

4

ANGUS

SPRING COVE RENO 4021

YON TOP CUT G730

YON SARAH D668

MEAD MAGNITUDE

KUHLE MS MAGNITUDE G236-H192

KUHLE MISS BLACK MAGIC G236

EPD'S/ac										
CED/%	BW/%	WW/%	YW/%	HP/%	Milk/%	MB/%	RE/%	\$M	\$C	\$B
6	4.01	105	176	17.4	32	1.1	1	88	333	189
55	95	1	1	10	15	20	20	10	10	15
Performance										Adj 365D Wt
WDA	ADG	REA	BF	IMF	Frame	Birth Wt	Final Wt			
4.04	4.66	15.3	0.4	5.62	5.7	79	1375			1449

79 lb. birth weight and 823 lb. 205-day weight. His sire is in the top 20% for calving ease and his dam's 18 calves put her in the top 1% for weaning and yearling weights.

36

JFCC DELMONICO 464

20911365

2/10/2024

BRAD & LINDSAY JOHNSON

JOHNSON FAMILY CATTLE

COLOR

BL

ON TEST WT

938

N6864 BOX ELDER RD, SHAWANO, WI, 54166

715-498-9328

% OF BREED

100

H/P/S P**PEN**

4

ANGUS

DB ICONIC G95

JFCC DELMONICO

JOHNSON FOREVER LADY 052

BASIN PAYWEIGHT PLUS 6048

TOKACH ERENETTA G135

TOKACH ERENETT CO81

EPD'S/ac										
CED/%	BW/%	WW/%	YW/%	HP/%	Milk/%	MB/%	RE/%	\$M	\$C	\$B
16	-2.1	77	129	13	34	1.35	0.82	76	307	178
2	3	25	35	45	10	10	35	25	15	25
Performance										Adj 365D Wt
WDA	ADG	REA	BF	IMF	Frame	Birth Wt	Final Wt			
3.6	4.67	18.19	0.44	88	5	72	1405			1252

464 is quite the package, sired by the Genex sire JFCC Delmonico, out of our young cow who has raised some outstanding calves. 464 has a set of digits like you won't believe, top 3% \$W and an impressive \$C at 300+. This bull is sleep all night calving ease (among the best of the entire Angus breed!) and has good looks to spare. Here's you next heifer bull.

37

DBLA BOLD RULER M470

4375916

1/23/2024

ALLAN ARNDT

DOUBLE A SIMMENTALS

COLOR

BL

ON TEST WT

876

4509 S. BELDINA RD, JANESVILLE, WI, 53546

608-774-0136

% OF BREED

100

H/P/S HP PEN

4

SIMMENTAL

WS PROCLAMATION E202

KBHR BOLD RULER H152

BAR CK MS X38 106Z

DBLA WIDEBODY F807

DBLA MS J176

DBLA MS F826

EPD'S/ac									
CED/%	BW/%	WW/%	YW/%	Milk/%	MCE/%	MWW/%	MB/%	REA/%	API/%
17.5	-1.6	73.7	115.4	23.6	10.6	60.4	0.57	0.4	166
3	8	70	53	43	2	60	6	99	8

Performance									
WDA	ADG	REA	BF	% IMF	Frame	Birth Wt	Final Wt	Adj 365D Wt	
3.23	4.42	14.23	0.39	4.37	4.9	76	1318	1207	

Homozygous Black, Homozygous Polled. His dam is a maternal sister to #29 bull. EPD's offer outstanding Calving ease and minus BWT, Breed leading Maternal Calving ease and Marbling. Super eye appeal to go with it. Use him on heifers and cows, keep all his daughters. No Creep.

38

YOLO TWO STEP 33M

4388147

2/26/2024

WADE STICHERT

YOLO CATTLE

COLOR

BL

ON TEST WT

927

N5413 DIVISION AVE, CHILI, WI, 54420

715-897-3602

% OF BREED

50

H/P/S P PEN

4

% SIMMENTAL

G A R BIG STEP K715

EZAR STEP UP 9178

BASIN LUCH 4261

WS BIG SHOT 3187

TECS 33H

CDI MS HOMETOWN 203C

EPD'S/ac									
CED/%	BW/%	WW/%	YW/%	Milk/%	MCE/%	MWW/%	MB/%	REA/%	API/%
9.5	1.6	89.7	146.5	24.1	9.2	69.4	0.83	1	152.1
85	78	13	8	45	16	16	8	8	23

Performance									
WDA	ADG	REA	BF	% IMF	Frame	Birth Wt	Final Wt	Adj 365D Wt	
3.69	4.53	14.98	0.29	4.9	5.8	94	1380	1406	

Outcross alert! A bull with a pedigree this unique, combined with an impressive data set is hard to find. Ranks in the top 10% for YW, ADG, CW, MARB, REA and TI. Bred to put dollars in your pocket come weaning time. Step Up sons are dominating sales across the country for their balanced epds, hoof quality and docility. Dam is a standout phenotypically and has maintained a 368 day calving interval.

39

S/A PROLIFIC 3267-1564

21033778

1/31/2024

ANDY & AMY STRASBURG

STRASBURG ANGUS

COLOR

BL

ON TEST WT

909

6709 STATE RD 73, MARSHALL, WI, 53559

608-444-2637

% OF BREED

100

H/P/S P PEN

4

ANGUS

ELLINGSON PROFOUND 8155

ELLINGSON PROLIFIC

EA QUEEN 8070

HOOVER NO DOUBT

S/A MAIDEN 3100-3267

S/A MAIDEN 679-3100

EPD'S/ac										
CED/%	BW/%	WW/%	YW/%	HP/%	Milk/%	MB/%	RE/%	\$M	\$C	\$B
2	2.1	74	132	16	32	0.9	0.42	92	303	163
85	70	30	30	20	15	35	85	4	20	35

Performance									
WDA	ADG	REA	BF	% IMF	Frame	Birth Wt	Final Wt	Adj 365D Wt	
3.5	4.91	12	0.3	4.5	5.2	68	1400	1229	

Flush brother to Lot 27, similar in their build. 1564 has a little added performance with a ADG that has been near the top of the test.

40

ADAMS ROYAL FLUSH 2406

20981981

3/17/2024

ARNOLD & ALICIA ADAMS

AHA ACRES

COLOR

BL

ON TEST WT

839

2062 FOUNTAIN BLUFF LANE, PLATTEVILLE, WI,

608-642-6982

% OF BREED

100

H/P/S P**PEN**

4

ANGUS

S A V RENOVATION 6822

S A V ROYAL FLUSH 2735

S A V EMBLYNETTE 2369

S A V RAINFALL 6846

S A V MADAME PRIDE 0615

S A V MADAME PRIDE 9389

EPD'S/ac										
CED/%	BW/%	WW/%	YW/%	HP/%	Milk/%	MB/%	RE/%	\$M	\$C	\$B
1	3.3	76	144	7.6	22	0.63	1.13	51	284	180
90	90	25	15	95	80	60	10	85	30	20

Performance										Adj 365D Wt
WDA	ADG	REA	BF	% IMF	Frame	Birth Wt	Final Wt			
3.71	4.74	16.19	0.35	5.22	5.1	83	1313			1344

This SAV Royal Flush son ranks in the top 25% of the breed for WW, top 15% for YW& top 10% for RE. His dam boasts a 366 calving interval & a 102 Weaning ration over her 3 AI sired calves. This bull has a 105 wean ratio. Dig into his pedigree & you will find POWER sires and MATERNAL dams. Use him on mature cows to put some quick weaning lbs. Looking to keep heifers? His daughters will perform as well!

41

WGA MEMPHIS 2M

20992253

1/12/2024

JIM & HOLLY MARSH

WALNUT GROVE ANGUS

COLOR

BL

ON TEST WT

886

1910 CHICAGO RD, EARLVILLE, IL, 60518

847-652-0931

% OF BREED

100

H/P/S P**PEN**

4

ANGUS

STEVENSON TURNING POINT

CONLEY SOUTH POINT 8362

PR LADY 909 4200-587

S7R ROUNTABLE J328

BNWZ PRINCESS 2761

EXAR PRINCESS 6151

EPD'S/ac										
CED/%	BW/%	WW/%	YW/%	HP/%	Milk/%	MB/%	RE/%	\$M	\$C	\$B
9	0.4	61	88	11.1	13	0.37	0.61	48	217	130
30	30	70	90	65	95	85	60	90	85	75

Performance										Adj 365D Wt
WDA	ADG	REA	BF	% IMF	Frame	Birth Wt	Final Wt			
3.15	4.34	15.41	0.25	4.67	4.9	70	1320			1267

Sure to be a calving ease bull with 3 generations of calving ease sires. CED of 9 and BW +.4. His dam from the Princess cow family are big barreled, big bone and easy flushing females. She as a 110 weaning ratio on her first calf.

43

AM-CLEAR VISION 33M

4402735

4/6/2024

AYLA & KYSON MOSS

MOSS FAMILY CATTLE

COLOR

BL

ON TEST WT

892

8594 FILMORE RD, WEST UNION, IA, 52715

563-380-3625

% OF BREED

100

H/P/S P**PEN**

4

SIMMENTAL

WS PROCLAMATION E202

WS ENHANCEMENT 25H

WS SWEET SIXTEEN F16

TKCC CARVER 65C

BMR MISS MY DREAM F19

BMR MISS MY DREAM B37

EPD'S/ac										
CED/%	BW/%	WW/%	YW/%	Milk/%	MCE/%	MWW/%	MB/%	REA/%	API/%	
12.6	-1.4	72.5	104	21.6	6.8	57.9	0.52	0.6	147.	
35	10	75	78	60	33	75	8	84	29	

Performance										Adj 365D Wt
WDA	ADG	REA	BF	% IMF	Frame	Birth Wt	Final Wt			
3.83	3.51	16.3	0.22	3.86	4.9	70	1243			1337

This WS Enhancement 25H Son will sire calves that come easy, with a -1.3 BW. He is an outstanding young bull with low birth weight, yet boasts an impressive high weaning weight, ensuring strong growth performance. He is an extremely high marbling bull with a High API (148.4) and TI (88) that ranks in the top 30% of the Breed. His Dam produces a solid calf every year and her docile traits, functionality and good feet have been passed down to him, adding value to any herd!

44

COZY LANE DEADWOOD GAMBLER

20945067

3/1/2024

TIM & JANE GRISWOLD

COZY LANE FARM

COLOR

BL

ON TEST WT

882

9244 CTY RD KP, BLACK EARTH, WI, 53515

608-334-1059

% OF BREED

100

H/P/S P**PEN**

4

ANGUS

POSS MAVERICK

POSS DEADWOOD

POSS ELLUNAMERE 399

G A R HOME TOWN

COSY LANE HOME TOWN 207

COZY LANE ENHANCE 195

EPD'S/ac										
CED/%	BW/%	WW/%	YW/%	HP/%	Milk/%	MB/%	RE/%	\$M	\$C	\$B
11	0.1	79	147	10.4	25	1.67	0.94	55	351	228
15	25	20	10	75	55	2	25	75	4	2

Performance										Adj 365D Wt
WDA	ADG	REA	BF	% IMF	Frame	Birth Wt	Final Wt			
3.85	5.43	16.19	0.4	5.85	5.9	68	1425			1407

A son of the rare and impressive Poss Deadwood, who ranks #1 in the breed for \$B. His dam is a beautiful Hometown daughter. We expect Gambler's calves to come easy, have monster growth and great carcass quality.

45

PADO REX 410

5044811

3/5/2024

PAUL & DONNA HABECK

PADO FARMS

COLOR

Red

ON TEST WT

811

W6011 CTY RD W, CASCADE, WI, 53011

920-946-7095

% OF BREED

100

H/P/S P**PEN**

4

RED ANGUS

FEDDES BRUNSWICK D202

GMRA KING JAMES 0272H

GMRA ESTONIA 124

BIEBER DEEP END B597

PADO PRIYA F822

PADO FOXV

EPD'S/ac										
CED/%	BW/%	WW/%	YW/%	Milk/%	Stay/%	MB/%	REA/%	PRO/%	HB/%	GM/%
13	-1.6	81	133	27	18	0.52	0.71	155	76	79
44	54	7	6	36	11	29	1	3	11	7

Performance										Adj 365D Wt
WDA	ADG	REA	BF	% IMF	Frame	Birth Wt	Final Wt			
3.38	4.27	16.01	0.28	4.36	5.3	80	1238			1207

Rex is strong through the front end and has a wide rib shape. Big growth, top 1% in ribeye area on EPD.

He has a very solid structure. We have sold all of this Dam's bull calves for breeding.

We really like this Bieber Deep End Dam.

46

ERICA ODYSSEY 423

21060285

3/19/2024

RICHARD & SUSAN KUNDE

KUNDE ANGUS

COLOR

BL

ON TEST WT

881

612 80TH AVE, BALDWIN, IA, 52207

563-249-5072

% OF BREED

100

H/P/S P**PEN**

4

ANGUS

S S ODYSSEY H71

S S ODYSSEY H71 OH28

S S MISS DATA MANAGER M519

WERNER PROWLER 4041

PROWLER ERICA 103

GAST TRACK ERICA 603

EPD'S/ac										
CED/%	BW/%	WW/%	YW/%	HP/%	Milk/%	MB/%	RE/%	\$M	\$C	\$B
8	1	66	116	12.6	22	0.61	0.73	55	237	140
35	45	55	55	50	80	65	45	75	75	65

Performance										Adj 365D Wt
WDA	ADG	REA	BF	% IMF	Frame	Birth Wt	Final Wt			
3.66	4.09	15	0.41	5.12	5.1	79	1290			1357

799 Adj. 205 wt. A thick made bull out of a young 3-yr old cow that carries a lot of natural thickness and is an easy flesher. His sire excels in carcass traits and has had very consistently top end calves at weaning. This bull should work for heifers.

47

J-M RANCH CRAFTSMAN 404

21022201

2/13/2024

JEFF MORRISSETTE

J-M RANCH

COLOR

BL

ON TEST WT

847

W5721 HARVEY RD, POYNETTE, WI, 53955

608-235-9498

% OF BREED

100

H/P/S P**PEN**

5

ANGUS

SITZ RESILIENT 10208

CONNEALY CRAFTSMAN

BLACK CATHY OF CONANGA 8521

S A V ANGUS VALLEY 1867

S/A LADY 2222-3328

S/A LADY 5M4-2222

EPD'S/ac										
CED/%	BW/%	WW/%	YW/%	HP/%	Milk/%	MB/%	RE/%	\$M	\$C	\$B
3	0.2	55	102	I+16	32	I+.7	I+.64	87	271	142
75	30	80	75	15	15	50	55	10	40	60
Performance										
WDA	ADG	REA	BF	% IMF	Frame	Birth Wt	Final Wt	Adj 365D Wt		
3.29	4.26	15.61	0.3	5.12	4.7	85	1273	1181		

If you are looking to start rebuilding your herd, here is a young sire that is more maternally designed when looking at his Milk and HP EPDs.

48

FLC BLUEPRINT 402

21112483

1/18/2024

JORY & KRISTIN FREMSTAD

FREMSTAD LAND & CATTLE

COLOR

BL

ON TEST WT

816

217 MELBY ST, WESTBY, WI, 54667

608-606-3314

% OF BREED

100

H/P/S P**PEN**

5

ANGUS

CONNEALY CONFIDENCE PLUS

WOODHILL BLUEPRINT

WOODHILL EVERGREEN Z291-B233

LT ENTERPRISE 5213

FREMSTAD'S PATRICIA 103

FOUNTAINS JEN PATRICIA 68

EPD'S/ac										
CED/%	BW/%	WW/%	YW/%	HP/%	Milk/%	MB/%	RE/%	\$M	\$C	\$B
11	-0.9	63	113	15.9	33	0.45	0.44	64	239	135
15	15	60	60	20	10	80	80	55	70	70
Performance										
WDA	ADG	REA	BF	% IMF	Frame	Birth Wt	Final Wt	Adj 365D Wt		
3.27	5.37	14	0.47	4.52	5	78	1353	1249		

This bull is a well balanced Woodhill Blueprint son and a great prospect for both cows and heifers. He had a BW ratio of 94 and recorded a respectable 101 WW ratio. His dam is a sound made Lt Enterprise daughter that raises great offspring while maintaining a moderate frame size.

49

S/A TRADEMARK 021-1494

21035913

1/30/2024

ANDY & AMY STRASBURG

STRASBURG ANGUS

COLOR

BL

ON TEST WT

895

6709 STATE RD 73, MARSHALL, WI, 53559

608-444-2637

% OF BREED

100

H/P/S P**PEN**

5

ANGUS

SITZ RESILIENT 10208

J TRADEMARK 1037

MILL BRAE IDEN GEORGINA 4086

CONNEALY CLARITY

S/A LADY 1134-021

S/A MC LADY 4182-1134

EPD'S/ac										
CED/%	BW/%	WW/%	YW/%	HP/%	Milk/%	MB/%	RE/%	\$M	\$C	\$B
7	0	77	126	13	21	0.85	0.73	93	304	163
45	25	25	40	45	85	40	45	3	20	35
Performance										
WDA	ADG	REA	BF	% IMF	Frame	Birth Wt	Final Wt	Adj 365D Wt		
3.39	4.65	14.6	0.22	4.16	4.8	78	1360	1241		

A calving ease J Trademark son, with added carcass merit. Dam was a two year old with 1494, she is a flush sister to the \$10,000 selection by Caliber Cattle in the 2023 Angus at the Congress Sale.

50

KM-LEADING EDGE 43M

4404646

3/30/2024

AYLA & KYSON MOSS

MOSS FAMILY CATTLE

COLOR

BL

ON TEST WT

871

8594 FILMORE RD, WEST UNION, IA, 52715

563-380-3625

% OF BREED

100

H/P/S P**PEN**

5

SIMMENTAL

CDI INNOVATOR 325D

LCDR PROGRESSIVE 106G

WS MISS SUGAR C4

CCR COWBOY CUT 5048Z

BMR MISS SARAH F5

HL MS SARAH 25X

EPD'S/ac									
CED/%	BW/%	WW/%	YW/%	Milk/%	MCE/%	MWW/%	MB/%	REA/%	API/%
14.6	-2.5	77.5	119.3	23.8	7.3	62.6	0.42	0.5	155.9
15	4	55	45	42	28	50	15	93	19
Performance									
WDA	ADG	REA	BF	% IMF	Frame	Birth Wt	Final Wt	Adj 365D Wt	
3.62	3.64	15.2	0.42	3.63	5.3	75	1235	1289	

This LCDR Progressive 106G Son is a great choice for hassle-free births with his calving ease of 14.5 and his low, 75-lb BW, he would even work on heifers! This bull has a great birth to yearling spread. He has excellent API (156) & TI (90) numbers that rank in the top 20% of the breed. He brings strong genetic value for both maternal and terminal traits. This bull's dam never misses having 2 of her calves on quality bull sales in the past few years. You will be glad you took this guy home!

51

SRN FIREBALL 2448

4938836

2/3/2024

JOE & SUE DUNPHY

SHAMROCK NOOK RED ANGUS

COLOR

BL

ON TEST WT

808

W646 STATE RD 59, ALBANY, WI, 53502

608-558-5342

% OF BREED

100

H/P/S P**PEN**

5

RED ANGUS

G A R SURE FIRE 6404

GB FIREBALL 672

GB ANTICIPATION 432

9 MILE QUARTERBACK 0002

SRN STONY 2242

JFCC STONY 056

EPD'S/ac										
CED/%	BW/%	WW/%	YW/%	Milk/%	Stay/%	MB/%	REA/%	PRO/%	HB/%	GM/%
13	-0.8	89	143	29	15	0.88	0.77	167	66	101
47	70	2	2	19	50	2	1	1	25	1
Performance										
WDA	ADG	REA	BF	% IMF	Frame	Birth Wt	Final Wt	Adj 365D Wt		
3.19	4.57	17.01	0.25	6.05	4.6	70	1265	1242		

Elite genetics meet powerhouse performance in this standout sire who is a black/red carrier. With 9 EPD % in the single digits, 2448 excels in both growth and carcass merit. His impressive 114 weaning ratio showcases his ability to start easy and grow fast. Backed by the proven Stony cow line and a dam with an MPPA of 106, he brings serious maternal strength. His unmatched combination of marbling and REA puts him at the very top for ProS, GM, CW, and REA—making him a true breed leader.

52

TPFC MARVEL 49M

4400734

3/6/2024

JEREMY BOBECK

TREMBLING PRAIRIE

COLOR

BL

ON TEST WT

866

N2575 CTY RD B, MARKESAN, WI, 53946

920-295-9072

% OF BREED

100

H/P/S P**PEN**

5

SIMMENTAL

CCR ANCHOR 9071B

W/C NIGHT WATCH 84E

MISS WERNING KP 8543U

KBHR SNIPER E036

TPFC DARCI 49K ET

HILB MISS VERSACE E57C

EPD'S/ac									
CED/%	BW/%	WW/%	YW/%	Milk/%	MCE/%	MWW/%	MB/%	REA/%	API/%
15.4	-1.4	66.0	91.29	26.3	7.1	59.3	0.11	1.0	131.7
10	10	90	99	25	29	65	65	15	53
Performance									
WDA	ADG	REA	BF	% IMF	Frame	Birth Wt	Final Wt	Adj 365D Wt	
3.37	3.64	13.63	0.39	4.56	4.1	83	1230	1286	

Here's a bull in the top 15% for CED & BW that will add bone & depth of rib. His proven pedigree includes W/C Nightwatch which was the high seller in the 2018 Werning Bull Sale and KBHR Sniper, a proven, productive, outcross calving ease bull. His maternal granddam is the stunning HILB Miss Versace E57C out of Hilbrands program in Minnesota. His dam is a moderate framed good uddered mother that can raise a calf. Marvel will work in any herd for replacement heifers or for feedlot calves.

53

JFCC RESONATE 403

4963922

3/18/2024

KEVIN & TERRI JOHNSON

JOHNSON FAMILY CATTLE

COLOR

Red

ON TEST WT

858

W8878 JELLEN RD, SPOONER, WI, 54801

715-645-0532

% OF BREED

100

H/P/S P**PEN**

5

RED ANGUS

BIEBER CL ENERGIZE F121

5L 9 MILE RESONATE 1113

9 MILE DORY JIBA 6922-9126

RED FINE LINE MULBERRY 26P

DAMAR TARMILY D224

DFRA TARMILY N512

EPD'S/ac										
CED/%	BW/%	WW/%	YW/%	Milk/%	Stay/%	MB/%	REA/%	PRO/%	HB/%	GM/%
13	-1.3	73	120	26	15	0.36	0.58	150	69	81
42	58	24	18	43	41	71	2	4	20	6

Performance										Adj
WDA	ADG	REA	BF	% IMF	Frame	Birth Wt	Final Wt			365D Wt
3.7	4.47	15.02	0.29	3.92	5.7	88	1305			1295

Pedigree lovers take note!! His dam is a DIRECT daughter of Tarmily N512, and he's sired by the very popular Resonate bull. 403 is in the Top 5% for carcass weight, ProS index. Use this multi-faceted sire to make progress in all areas.

54

KUHLE SALVATION J325 M422

20940934

3/10/2024

DAVID KUHLE

KUHLE ANGUS

COLOR

BL

ON TEST WT

845

1491 HWY 80, HAZEL GREEN, WI, 53811

563-542-0803

% OF BREED

100

H/P/S P**PEN**

3

ANGUS

SG SALVATION

KUHLE SALVATION F142 J325

KUHLE MISS BLACK ONYX F142

MEAD MAGNITUDE

KUHLE MISS MAGNITUDE K356A

KUHLE MISS TESTAMENT F214 H309

EPD'S/ac										
CED/%	BW/%	WW/%	YW/%	HP/%	Milk/%	MB/%	RE/%	\$M	\$C	\$B
4	2.6	87	154	6.7	36	0.93	1.42	45	281	182
70	80	10	10	95	4	30	2	90	35	20

Performance										Adj
WDA	ADG	REA	BF	% IMF	Frame	Birth Wt	Final Wt			365D Wt
3.58	4.48	16.2	0.3	5.76	5	77	1293			1374

77 lb. birth weight and 734 lb. 205-day weight. His sire is in the top 2% for weaning weight and his dam is in the top 1% for calving ease and birth weight.

55

YOLO FLINTLOCK 13M

4388157

3/23/2024

WADE STICHERT

YOLO CATTLE

COLOR

BL

ON TEST WT

822

N5413 DIVISION AVE, CHILI, WI, 54420

715-897-3602

% OF BREED

75

H/P/S P**PEN**

5

% SIMMENTAL

REDHILL 672X X004 231A

IR FLINT HILLS H344

IR MS GENEVA C550

WS PROCLAMATION E202

TECS HYDRANGEA 13H

TECS BRILLIANT 401B

EPD'S/ac										
CED/%	BW/%	WW/%	YW/%	Milk/%	MCE/%	MWW/%	MB/%	REA/%	API/%	
12.4	2	86.7	138.5	24.6	7.4	67.9	0.82	0.9	158.8	
50	84	20	18	40	40	25	8	10	15	

Performance										Adj
WDA	ADG	REA	BF	% IMF	Frame	Birth Wt	Final Wt			365D Wt
3.64	4.43	16.69	0.27	3.8	5.4	87	1265			1309

Another high growth, high carcass merit bull for your consideration. Top 25% for WW, YW, ADG, DOC, YG, MARB, REA and TI. All this while maintaining double digit calving ease in an attractive, moderate package. Offers a truly unique sire stack as there are currently only a handful of Flint Hills sons in the simmental database. Stems from a cow family known for its longevity. Homo polled, homo black

56

MAR MIC VIKING 1650-423

20973835

3/10/2024

MATT MCNETT

MAR MIC FARM

COLOR

BL

ON TEST WT

827

10958 MINE ROAD, CUBA CITY, WI, 53807

608-770-3695

% OF BREED

100

H/P/S P**PEN**

5

ANGUS

SHIEFELBEIN SKOL 6786

SHIEFELBEIN VIKING 1650

FROSTY ELBA 2318

ICC MASTER PLAN

MAR MIC 214-866

MAR MIC LUCY 434/214

EPD'S/ac										
CED/%	BW/%	WW/%	YW/%	HP/%	Milk/%	MB/%	RE/%	\$M	\$C	\$B
-7	4.8	92	154	10.2	18	0.69	0.8	41	260	169
95	95	3	10	75	95	55	35	95	50	30

Performance										Adj 365D Wt
WDA	ADG	REA	BF	% IMF	Frame	Birth Wt	Final Wt			
3.73	5.18	13.69	0.46	4.56	5.9	91	1345			1351

Mar Mic Viking is sired by Schiefelbein Viking who was the Top Selling bull from Schiefelbein's 2021 sale and was sold to Genex. This bull has as much rib shape and depth as any bull. His growth numbers rank in the top of the breed along with a high \$M and \$C. He will make a great herd sire to add performance in the feed lot or replacement breeding stock.

57

J-M RANCH IRON HORSE 405

21022202

2/17/2024

JEFF MORRISSETTE

J-M RANCH

COLOR

BL

ON TEST WT

821

W5721 HARVEY RD, POYNETTE, WI, 53955

608-235-9498

% OF BREED

100

H/P/S P**PEN**

5

ANGUS

EXAR STALLION 7986

BIGK/WSC IRON HORSE 025F

EXAR HENRIETTA PRIDE 5702

MUSGRAVE 316 EXCLUSIVE

J-M RANCH LADY 203

S/A LADY 2222-3328

EPD'S/ac										
CED/%	BW/%	WW/%	YW/%	HP/%	Milk/%	MB/%	RE/%	\$M	\$C	\$B
8	0.3	80	144	I+16	26	I+.6	I+.80	74	289	166
35	30	20	15	15	50	60	35	25	25	35

Performance										Adj 365D Wt
WDA	ADG	REA	BF	% IMF	Frame	Birth Wt	Final Wt			
3.62	5.67	14.8	0.4	5.45	5.2	75	1388			1386

This brute has been overpowering with an outstanding through this entire program. Through the coldest part he had a period gain of over 7#/day! Another Iron Horse son who will certainly offer up the opportunity to add performance with his first calf crop no matter the marketing strategy.

58

SRN PLAYMAKER 2413

4938770

1/12/2024

JOE & SUE DUNPHY

SHAMROCK NOOK RED ANGUS

COLOR

BL

ON TEST WT

821

W646 STATE RD 59, ALBANY, WI, 53502

608-558-5342

% OF BREED

100

H/P/S P**PEN**

5

RED ANGUS

PIE QUARTERBACK 789

WSM PLAYMAKER 1080J

BIEBER PRIMROSE 107W

BIEBER GLADIATOR C386

SRN ELLIE 2122

SRN ELLIE 1849

EPD'S/ac										
CED/%	BW/%	WW/%	YW/%	Milk/%	Stay/%	MB/%	REA/%	PRO/%	HB/%	GM/%
14	-4.7	61	99	29	16	0.5	0.25	109	54	55
40	8	68	63	23	36	33	26	42	49	38

Performance										Adj 365D Wt
WDA	ADG	REA	BF	% IMF	Frame	Birth Wt	Final Wt			
3.03	4.49	14.06	0.35	5.37	4	73	1270			1169

This standout black/red gene carrier offers exceptional calving ease, making him a top choice for heifer-friendly matings. His marbling and ribeye EPDs rank in the top third of the breed, ensuring superior carcass quality. Backed by the legendary Eleanor cow—our foundation matriarch—his pedigree is packed with proven maternal strength, performance, and longevity. A true combination of elite genetics and real-world functionality!

59

JFCC TOP GUN 402

20996505

3/16/2024

KEVIN & TERRI JOHNSON

JOHNSON FAMILY CATTLE

COLOR

BL

ON TEST WT

860

W8878 JELLEN RD, SPOONER, WI, 54801

715-645-0532

% OF BREED

100

H/P/S P**PEN**

5

ANGUS

V A R FIRE POWER

SCHIEFELBEIN TOP GUN 522

FROSTY ELBA 4220

BASIN PAYWEIGHT 1682

MARDA BLACKBIRD 838

MF BLACKBIRD 51

EPD'S/ac										
CED/%	BW/%	WW/%	YW/%	HP/%	Milk/%	MB/%	RE/%	\$M	\$C	\$B
7	1.9	76	138	11.8	30	0.48	0.51	63	256	149
45	65	25	20	60	25	75	75	55	55	55

Performance										Adj 365D Wt
WDA	ADG	REA	BF	% IMF	Frame	Birth Wt	Final Wt			
3.65	4.35	16.1	0.37	3.94	5.8	82	1295			1298

Very complete bull by the exciting Genex sire, Schiefelbein Top Gun. Backed by Marda Blackbird 51 the foundation donor of the Marda program. Maternal sibs to this bull's dam have sold for \$39,000, \$25,000, \$24,000, \$19,500, and \$13,000. 402 has exceptional feet EPD's which means he should be a improver on your next calf crop.

60

JFCC ROLLIN DEEP 482

4956666

3/15/2024

BRAD & LINDSAY JOHNSON

JOHNSON FAMILY CATTLE

COLOR

Red

ON TEST WT

839

N6864 BOX ELDER RD, SHAWANO, WI, 54166

715-498-9328

% OF BREED

100

H/P/S P**PEN**

5

RED ANGUS

BIEBER ROOSEVELT W384

BIEBER ROLLIN DEEP Y118

BIEBER TILLY 399W

HUST CHIEF SEQUOYA R336

BIEBER DATELINE 308Y

BASIN ROSE 7127

EPD'S/ac										
CED/%	BW/%	WW/%	YW/%	Milk/%	Stay/%	MB/%	REA/%	PRO/%	HB/%	GM/%
15	-3.1	60	93	27	13	0.25	0.01	69	38	30
20	25	72	74	41	70	89	73	92	78	88

Performance										Adj 365D Wt
WDA	ADG	REA	BF	% IMF	Frame	Birth Wt	Final Wt			
3.48	3.99	16.87	0.46	3.81	4.7	72	1238			1215

Here's a chance to buy a maternal brother to the AI bull Bieber Atomic. Semen from his sire is rare and expensive too. Look to this deep bodied, easy fleshing powerhouse to add cow power and make steers that pay. Full brother sells as lot 68.

61

R R A DYNAMIC 24A11

21023018

3/7/2024

JOHN PIEPER

ROCK RUN ANGUS

COLOR

BL

ON TEST WT

835

7376 E. CEDARVILLE RD, ROCK CITY, IL, 61070

815-238-6270

% OF BREED

100

H/P/S P**PEN**

5

ANGUS

DEER VALLEY GROWTH FUND

B A R DYNAMIC

B A R BLACKCAP 7235-B0048

BYERGO BLACK MAGIC 3348

R R A EVERELDA ENTENSE 21B11

R R A EVERELDA ENTENSE 1911

EPD'S/ac										
CED/%	BW/%	WW/%	YW/%	HP/%	Milk/%	MB/%	RE/%	\$M	\$C	\$B
-1	3.5	101	175	18	31	1	1.02	76	341	204
95	90	1	1	10	20	25	15	25	5	10

Performance										Adj 365D Wt
WDA	ADG	REA	BF	% IMF	Frame	Birth Wt	Final Wt			
3.57	4.65	15.61	0.42	5.45	6.4	90	1300			1351

Top 1% of the breed for WW and YW. Top 10% of the breed for \$B. This bull descends from the Sitz Everelda Entense Cow family on the bottom side – and sired by the calving ease and carcass quality bull BAR Dynamic. He was raised without creep feed. He will give you calves with growth and carcass quality.

62

LDL HUSKER M934

4393851

3/6/2024

TIM LUNDELL

LUNDELL FAMILY CATTLE

COLOR Red**ON TEST WT** 803

1190 GOLDMAN LANE, LIVINGSTON, WI, 53554

608-341-8296

% OF BREED 75**H/P/S P PEN** 5**% SIMMENTAL**

PROFIT

KMJ HUSKER 814

KMJ MISS COWGIRL 264

MR HOC BROKER

LDL LADY G159

V A F ALICE V61

EPD'S/ac									
CED/%	BW/%	WW/%	YW/%	Milk/%	MCE/%	MWW/%	MB/%	REA/%	API/%
5.7	4.7	86.7	135.1	23.3	2.6	66.8	0.02	0.7	91.7
99	99	20	20	52	99	30	99	30	99

Performance									
WDA	ADG	REA	BF	% IMF	Frame	Birth Wt	Final Wt	Adj 365D Wt	
3.46	4.6	14.52	0.26	3.55	5.9	84	1263	1251	

3/4 blood red baldie bull that has all the bells and whistles. If you are looking for a bull that will make those good looking, high producing females and still tip the scales in your favor on steers...This is your guy!
Flush brother to lot 63

63

LDL HUSKER M942

4393852

3/8/2024

TIM LUNDELL

LUNDELL FAMILY CATTLE

COLOR BL**ON TEST WT** 809

1190 GOLDMAN LANE, LIVINGSTON, WI, 53554

608-341-8296

% OF BREED 75**H/P/S P PEN** 6**% SIMMENTAL**

PROFIT

KMJ HUSKER 814

KMJ MISS COWGIRL 264

MR HOC BROKER

LDL LADY G159

V A F ALICE V61

EPD'S/ac									
CED/%	BW/%	WW/%	YW/%	Milk/%	MCE/%	MWW/%	MB/%	REA/%	API/%
6.3	3.4	77.7	106.7	23.3	3.2	62.4	0.14	0.5	104.6
99	95	47	75	52	94	50	88	70	91

Performance									
WDA	ADG	REA	BF	% IMF	Frame	Birth Wt	Final Wt	Adj 365D Wt	
3.46	4.49	15.06	0.21	5.41	5.5	82	1258	1250	

Homozygous black baldie 3/4 blood Simmental bull. Weaned off with an adjusted weight of 777 lbs.
Flush brother to lot 62.

64

SRN QUARTERBACK 2437

4938818

1/28/2024

JOE & SUE DUNPHY

SHAMROCK NOOK RED ANGUS

COLOR Red**ON TEST WT** 807

W646 STATE RD 59, ALBANY, WI, 53502

608-558-5342

% OF BREED 100**H/P/S P PEN** 6**RED ANGUS**

PIE QUARTERBACK 789

9 MILE QUARTERBACK 0002

6R CAMEO 722E

SRN KODIAK 1804

SRN ELLIE 2075

SRN ELEANOR 1874

EPD'S/ac										
CED/%	BW/%	WW/%	YW/%	Milk/%	Stay/%	MB/%	REA/%	PRO/%	HB/%	GM/%
11	-2.5	67	114	30	15	0.52	0.05	103	51	52
72	36	43	29	15	47	29	65	52	55	45

Performance									
WDA	ADG	REA	BF	% IMF	Frame	Birth Wt	Final Wt	Adj 365D Wt	
3.07	4.31	14.71	0.27	3.78	4.8	74	1238	1140	

Built on a foundation of proven genetics, 2437 traces back to our prolific X11 cow, known for her incredible fertility, including a set of triplet heifers. This long bodied bull stands out with his added length, translating directly to more pounds at weaning and beyond. With a pedigree stacked for performance and maternal excellence, SRN Quarterback 2437 is a powerful choice for producers looking to add growth and reliability to their herd.

65

JRQC MAXIMUS

3203573

3/29/2024

JOHN ROECKER

JR CATTLE COMPANY

COLOR

Red

ON TEST WT

801

PO BOX 12, BROWNSVILLE, WI, 53006

920-238-1513

% OF BREED

60

H/P/S P**PEN**

6

LIMFLEX

WULFS ENVOY K116E

WULFS HOLLIDAY 4841H

WULFS BESAME MUCHO 4841B

WULFS OZARK K115E

JRQC LUCY

PBR5 646D

EPD'S/ac									
CED/%	BW/%	WW/%	YW/%	Milk/%	YG/%	CW/%	REA/%	MB/%	\$TPI/%
12	0.1	80	124	26	-0.32	24	0.9	0.3	94.26
30	30	15	25	40	10	85	10	35	65
Performance									
WDA	ADG	REA	BF	% IMF	Frame	Birth Wt	Final Wt	Adj 365D Wt	
3.52	4.04	16.4	0.27	3.4	6.1	90	1205	1314	

This Wulfs Holliday 4841H son puts it all together not only on paper but also in his phenotype.

With a CED of 12 and BW of .00 and YW of 123, you will want him to sire your next calf crop.

67

FLC CRAFTSMAN 406

21112488

1/22/2024

JORY & KRISTIN FREMSTAD

FREMSTAD LAND & CATTLE

COLOR

BL

ON TEST WT

794

217 MELBY ST, WESTBY, WI, 54667

608-606-3314

% OF BREED

100

H/P/S P**PEN**

6

ANGUS

SITZ RESILIENT 10208

CONNEALY CRAFTSMAN

BLACK CATHY OF CONANGA 8521

STEVENSON ROCKMOUNT RX933

MILL COULEE BLACKBIRD 609

MILL COULEE BLACKBIRD 402

EPD'S/ac										
CED/%	BW/%	WW/%	YW/%	HP/%	Milk/%	MB/%	RE/%	\$M	\$C	\$B
10	0.6	62	109	13.4	36	0.74	0.69	92	283	147
25	35	65	65	40	4	50	50	4	30	55
Performance										
WDA	ADG	REA	BF	% IMF	Frame	Birth Wt	Final Wt	Adj 365D Wt		
2.98	4.26	12.91	0.26	4.4	4.5	82	1220	1084		

This bull's sire is the most popular bull in the angus breed today. His structural soundness and low birth weight make him a great option for both cows and heifers. His 9 year old dam still remains productive in the herd today.

68

JFCC ROLLIN DEEP 480

4956664

3/11/2024

BRAD & LINDSAY JOHNSON

JOHNSON FAMILY CATTLE

COLOR

Red

ON TEST WT

825

N6864 BOX ELDER RD, SHAWANO, WI, 54166

715-498-9328

% OF BREED

100

H/P/S P**PEN**

6

RED ANGUS

BIEBER ROOSEVELT W384

BIEBER ROLLIN DEEP Y118

BIEBER TILLY 399W

HUST CHIEF SEQUOYA R336

BIEBER DATELINE 308Y

BASIN ROSE 7127

EPD'S/ac										
CED/%	BW/%	WW/%	YW/%	Milk/%	Stay/%	MB/%	REA/%	PRO/%	HB/%	GM/%
12	-3	65	97	27	17	0.38	0.1	94	53	41
59	28	52	67	41	26	64	54	65	51	71
Performance										
WDA	ADG	REA	BF	% IMF	Frame	Birth Wt	Final Wt	Adj 365D Wt		
3.35	3.83	15.31	0.41	3.6	4.3	76	1208	1195		

Here's a chance to buy a maternal brother to the AI bull Bieber Atomic. Semen from his sire is rare and expensive too.

Look to this deep bodied, easy fleshing powerhouse to add cow power and make steers that pay.

Full brother sells as lot 60

70

RRF HIGHLANDER 200M

20989091

3/13/2024

MATT SOLVERSON

ROCKY ROAD FARMS

COLOR BL**ON TEST WT** 761

11124 STATE RD 23, DARLINGTON, WI, 53530

608-482-1765

% OF BREED 100**H/P/S P****PEN** 6**ANGUS**

SPRING COVE RENO 4021

BALDRIDGE HIGHLANDER

BALDRIDGE ISABEL D753

RB THE ROCK 0A31-867

RRF THE ROCK PRINCESS I003

RB PRINCESS ACCLAIM 732-978

EPD'S/ac										
CED/%	BW/%	WW/%	YW/%	HP/%	Milk/%	MB/%	RE/%	\$M	\$C	\$B
8	1.6	83	148	17.5	31	0.49	0.72	83	292	161
35	60	15	10	10	20	75	45	10	25	40

Performance										Adj 365D Wt
WDA	ADG	REA	BF	% IMF	Frame	Birth Wt	Final Wt			
3.51	4.94	14	0.37	4.33	5.4	75	1255			1333

This bull will give you fast growing, easy-keeping calves without sacrificing calving ease. His full sister is calving at the end of February and is one my most exciting matings for next year. Dam is nice uddered, low maintenance mother that I look forward to seeing when I check cattle.

71

FLC IRON HORSE 412

21112486

3/19/2024

JORY & KRISTIN FREMSTAD

FREMSTAD LAND & CATTLE

COLOR BL**ON TEST WT** 749

217 MELBY ST, WESTBY, WI, 54667

608-606-3314

% OF BREED 100**H/P/S P****PEN** 6**ANGUS**

EXAR STALLION 7986

BIGK/WSC IRON HORSE O25F

EXAR HENRIETTA PRIDE 5702

S A V RAINDANCE 6848

S A V BLACKCAP MAY 9506

S A V BLACKCAP MAY 4517

EPD'S/ac										
CED/%	BW/%	WW/%	YW/%	HP/%	Milk/%	MB/%	RE/%	\$M	\$C	\$B
10	0.2	70	116	12.4	29	0.34	0.96	88	268	139
25	30	40	55	55	30	90	20	10	45	65

Performance										Adj 365D Wt
WDA	ADG	REA	BF	% IMF	Frame	Birth Wt	Final Wt			
3.42	4.54	15.91	0.32	4.02	4.7	96	1203			1221

Here is a bull that stems from maternal greatness. His dam is a descendant of the infamous SAV Blackcap May 4136 who has earned the reputation of one of the most influential cows in the Angus breed. His dam has weaned 3 calves with an average weaning ratio of 103. He had a personal weaning weight of 702. He has proven to excel in his growth and exhibits incredible strength.

72

PADO JACK M427

5044829

3/18/2024

PAUL & DONNA HABECK

PADO FARMS

COLOR Red**ON TEST WT** 741

W6011 CTY RD W, CASCADE, WI, 53011

920-946-7095

% OF BREED 100**H/P/S P****PEN** 6**RED ANGUS**

SPUR FRANCHISE 7070

THOMAS JEFFERSON 55602

THOMAS ERICA 3339

H2R PROFITBUILDER B403

PADO LINDSEY G928

DBR MS ADVANCE N2421

EPD'S/ac										
CED/%	BW/%	WW/%	YW/%	Milk/%	Stay/%	MB/%	REA/%	PRO/%	HB/%	GM/%
13	-1.5	74	121	24	13	0.77	0.34	152	54	98
47	56	21	17	72	71	6	17	3	48	1

Performance										Adj 365D Wt
WDA	ADG	REA	BF	% IMF	Frame	Birth Wt	Final Wt			
3.3	4.24	14.33	0.27	6.04	5.3	86	1165			1185

This bull is sired by Thomas Jefferson which brings out cross genetics. His overall skeletal build is truly square from the ground up. Good muscle shape and is wide up front. Gridmaster rating is in top 1%. Possess big growth attributes in proven EPD's.

73

T C A BREAKTHROUGH 456

20983946

3/31/2024

MARK & RUTH KUHN

TWIN CREEK ANGUS

COLOR

BL

ON TEST WT

786

1799 293RD AVENUE, FORT ATKINSON, IA, 52144

563-419-6441

% OF BREED

100

H/P/S P**PEN**

6

ANGUS

G A R PROPHET K263

BEAL BREAKTHROUGH

H P C A SURE FIRE S6

GB FIREBALL 672

T C A FIREBALL BLACKCAP 106

T C A JET BLACKCAP 905

EPD'S/ac										
CED/%	BW/%	WW/%	YW/%	HP/%	Milk/%	MB/%	RE/%	\$M	\$C	\$B
13	1	86	148	11.1	33	1.73	1.38	76	377	232
10	45	10	10	65	10	2	2	25	1	2

Performance										Adj 365D Wt
WDA	ADG	REA	BF	% IMF	Frame	Birth Wt	Final Wt			
3.8	5.07	15.51	0.36	7.15	5.7	82	1293			1356

No other bull in the Angus breed can match his combination of CED ,Scrotal, Claw, Angle, Hair Shed, Marbling, REA.

Look up his pedigree great sire stack! Our top adjusted weaning weight bull at 814 lbs. , we do not creep feed.

Dam is an ideal Angus cow. This bull is a stud with a great disposition.

74

T C A BREAKTHROUGH 455

20983953

3/28/2024

MARK & RUTH KUHN

TWIN CREEK ANGUS

COLOR

BL

ON TEST WT

769

1799 293RD AVENUE, FORT ATKINSON, IA, 52144

563-419-6441

% OF BREED

100

H/P/S P**PEN**

6

ANGUS

G A R PROPHET K263

BEAL BREAKTHROUGH

H P C A SURE FIRE S6

AF MAGNUM AI 8084

T C A BLACKLASS MAGNUM AI20

T C A JET BLACKLASS 902

EPD'S/ac										
CED/%	BW/%	WW/%	YW/%	HP/%	Milk/%	MB/%	RE/%	\$M	\$C	\$B
14	-0.1	86	141	9.9	29	1.36	1.22	82	331	192
4	25	10	20	80	30	10	5	15	10	15

Performance										Adj 365D Wt
WDA	ADG	REA	BF	% IMF	Frame	Birth Wt	Final Wt			
3.45	4.14	16.6	0.27	5.9	5	68	1183			1325

A bull that does it all. He is a14 for calving ease direct with excellent growth, carcass and maternal traits. This balance

comes from 12 generations of AI sires. His cow family has produced several bulls that have finished first at the

Iowa Bull Tests. He had an adjusted weaning weight of 811 lbs. From a first calf cow. He has a very nice look also.

75

AHAA ENERGIZE 2407

4953708

3/18/2024

ARNOLD & ALICIA ADAMS

AHA ACRES

COLOR

RED

ON TEST WT

672

2062 FOUNTAIN BLUFF LANE, PLATTEVILLE, WI,

608-642-6982

% OF BREED

100

H/P/S P**PEN**

6

RED ANGUS

BIEBER CL ATOMIC C218

AHAA MADAME PRIDE 2219

BIEBER CL ADELLE 575D

UWP NEXUS 2010

BIEBER CL ENERGIZE F121

S A V MADAME PRIDE 9389

EPD'S/ac										
CED/%	BW/%	WW/%	YW/%	Milk/%	Stay/%	MB/%	REA/%	PRO/%	HB/%	GM/%
17	-3.1	72	125	25	13	0.69	0.07	131	56	75
8	25	25	13	60	74	11	61	15	45	10

Performance										Adj 365D Wt
WDA	ADG	REA	BF	% IMF	Frame	Birth Wt	Final Wt			
3.12	4.31	12.92	0.33	3.53	4.4	73	1102			1228

Out of a super stylish 1st calf heifer, sired by the popular Energize, this herd sire prospect catches your eye with his dark red color and balanced design. His epd profile is just as stylish with having 9 traits top 25% or better of the breed. Most impressive is his ability to be in the top 15% for ProS, top 10% GM while being a calving ease sire with powerful growth EPDs.

Great disposition on this one. Will be outstanding to use on heifers no matter the color or breed. SAV breeding on his dam's side, including Charlo, will make some growthy calves with the potential to keep some stylish, functional females.



RRF HIGHLANDER M006

20977460 4/8/2024

MATT SOLVERSON ROCKY ROAD FARMS **COLOR** BL **ON TEST WT** 650
11124 STATE RD 23, DARLINGTON, WI, 53530 608-482-1765 **% OF BREED** 100 **H/P/S P** **PEN** 6

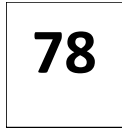
ANGUS

SPRING COVE RENO 4021
BALDRIDGE HIGHLANDER
BALDRIDGE ISABEL D753
WOODHILL FOREMOST X353-D383
WOODHILL EVERGREEN E202-G184
WOODHILL EVERGREEN A60-E202

EPD'S/ac										
CED/%	BW/%	WW/%	YW/%	HP/%	Milk/%	MB/%	RE/%	\$M	\$C	\$B
14	-0.1	81	142	11.3	28	1.17	0.59	97	329	179
4	25	15	15	65	35	15	65	2	10	20

Performance										Adj 365D Wt
WDA	ADG	REA	BF	% IMF	Frame	Birth Wt	Final Wt			
3.22	4.2	13.91	0.32	5.3	4.9	63	1070			1148

Good footed calving ease specialist that doesn't give up on WW and YW from a great Woodhill cow family. His eye appeal and carcass traits make his feed efficiency seem like an added bonus. His dam has produced two great females we plan to keep in our herd.



FLC HOMETOWN 414

21123600 4/6/2024

JORY & KRISTIN FREMSTAD FREMSTAD LAND & CATTLE **COLOR** BL **ON TEST WT** 669
217 MELBY ST, WESTBY, WI, 54667 608-606-3314 **% OF BREED** 100 **H/P/S P** **PEN** 6

ANGUS

G A R HOME TOWN
S/A HOMETOWN 1134-1532
S/A MC LADY 4182-1134
MARDA BLACKSMITH 683
MARDA FOREVER LADY 023
MARDA FOREVER LADY 451

EPD'S/ac										
CED/%	BW/%	WW/%	YW/%	HP/%	Milk/%	MB/%	RE/%	\$M	\$C	\$B
12	-1.1	65	121	9.1	29	0.55	0.65	57	232	135
10	10	55	45	85	30	70	55	70	75	70

Performance										Adj 365D Wt
WDA	ADG	REA	BF	% IMF	Frame	Birth Wt	Final Wt			
3.31	4.36	16.3	0.28	4.22	5.3	78	1105			1166

This stout-made bull exhibits incredible eye appeal. His dam is a well-balanced 5yr old that is producing beautiful offspring. This is a calf that registered a low birthweight while recording a respectable 697 lb. weaning weight which ratioed 102.

NOTES

[illegible]



LOT 23



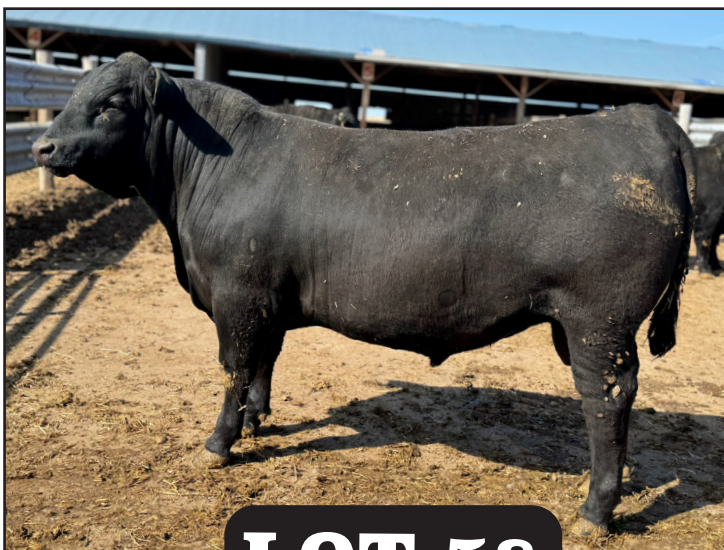
LOT 11



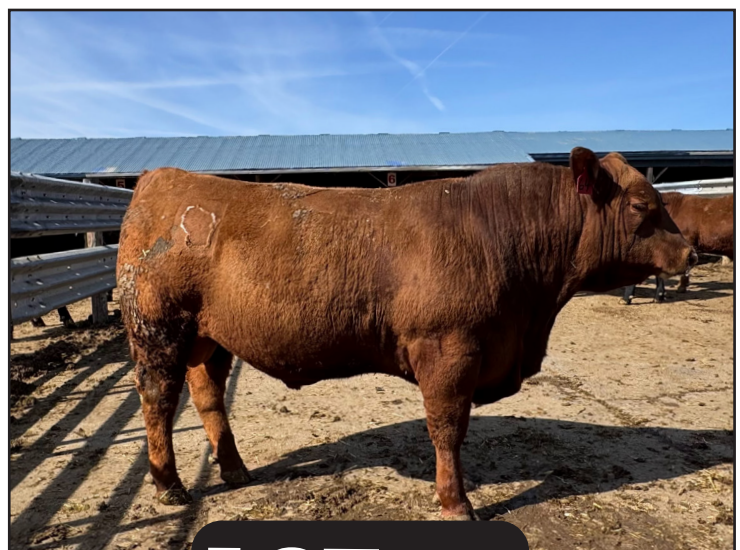
LOT 3



LOT 57



LOT 58



LOT 64



**WISCONSIN BEEF
IMPROVEMENT ASSN.**

**RETURN ADDRESS
25732 HAMMER LANE
CUBA CITY, WI 53807**

See you there!



LOT 1